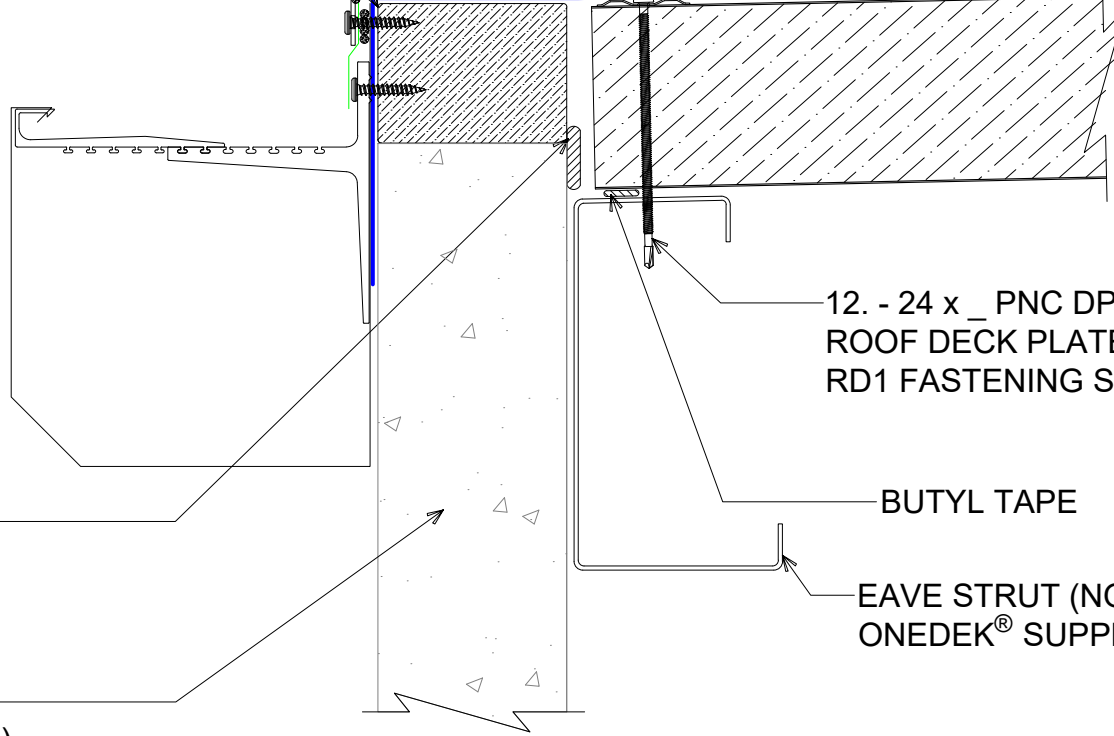


WOOD NAILER BY OTHERS
(NOT BY ONEDEK® SUPPLIER)

NOTE: REFER TO DETAIL _E FOR EDGE
METAL ASSEMBLY INFORMATION.

3" MIN.

HOT-AIR WELDED __ 45 MIL
REINFORCED FLASHING
ONEDEK® THERMOPLASTIC
ROOF MEMBRANE (SEE
"ONEDEK® ROOFING MEMBRANE"
FOR ATTACHMENT OPTIONS)



FILL VOID WITH ONE-PART
EXPANDING FOAM SEALANT

12. - 24 x _ PNC DP4 W/ "RP-01"
ROOF DECK PLATE (REFER TO
RD1 FASTENING SYSTEM)

BUTYL TAPE

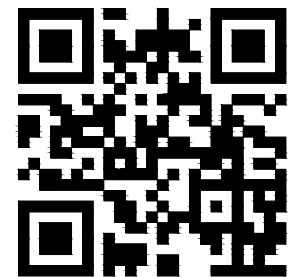
EAVE STRUT (NOT BY
ONEDEK® SUPPLIER)

WALL SYSTEM BY OTHERS
(NOT BY ONEDEK® SUPPLIER)

| | | |
|---|-------------------|------------------|
| DETAIL: GUTTER W/ PERIMETER EDGE METAL | | SHEET: 1 OF 1 |
| APPLICATION: RD1 ROOF DECK, COMMERCIAL & INDUSTRIAL, COLD-STORAGE AWIP DETAIL NUMBER: RDR-CICS-WBO-004 | DATE: 06/27/24 | DRAWN BY: MMF |

GUTTER W/ PERIMETER EDGE METAL

(SECTION VIEW)



929 ALDRIDGE ROAD
VACAVILLE, CA 95688
TEL: (707) 359-2280
FAX: (707) 359-2286
WWW.AWIPANELS.COM



WOOD NAILER BY OTHERS
(NOT BY ONEDEK® SUPPLIER)

POLYETHER SEALANT

CB-90 TERMINATION BAR x 10'-0"

3" MIN.

HOT-AIR WELDED __ 45 MIL
REINFORCED FLASHING
ONEDEK® THERMOPLASTIC
ROOF MEMBRANE (SEE
"ONEDEK® ROOFING MEMBRANE"
FOR ATTACHMENT OPTIONS)

2-PIECE EXTRUDED
ALUM. BRACKET 1" WIDE
@ 2'-0" O/C

1 1/2" MIN. WELD (CONTINUOUS)

14. - 13 x 1.5" TRU DP1 6" O/C

#14 x 1 1/2" UNIVERSAL
FASTENER 2'-0" O/C

WR GUTTER - 7 3/4", FORMED IN
12'-0" LENGTHS W/
CONCEALED SPLICES, 6" WIDE

WALL SYSTEM BY OTHERS
(NOT BY ONEDEK® SUPPLIER)

#E GUTTER W/ PERIMETER EDGE METAL

(SECTION VIEW)

DETAIL:

GUTTER W/ PERIMETER EDGE METAL, CHAMFER VERSION 7 3/4"

APPLICATION:

RD1 ROOF DECK, COMMERCIAL & INDUSTRIAL, COLD-STORAGE

AWIP DETAIL NUMBER:

RDR-CICS-WBO-004

DATE:

06/27/24

DRAWN BY:

MMF

SHEET:

1

OF 1

929 ALDRIDGE ROAD
VACAVILLE, CA 95688
TEL: (707) 359-2280
FAX: (707) 359-2286
WWW.AWIPANELS.COM

All Weather
Insulated Panels

