

MW 4" EXPANDED PANEL JOINT

(SECTION VIEW)

DETAIL:

PANEL JOINT - 4" PANEL

APPLICATION:
 HORIZONTAL FIRE WALL, COMMERCIAL & INDUSTRIAL
 AWIP DETAIL NUMBER:
 MHW-ACI-P-J-010 - 4

DATE:
 10/04/23
 DRAWN BY:
 MMF

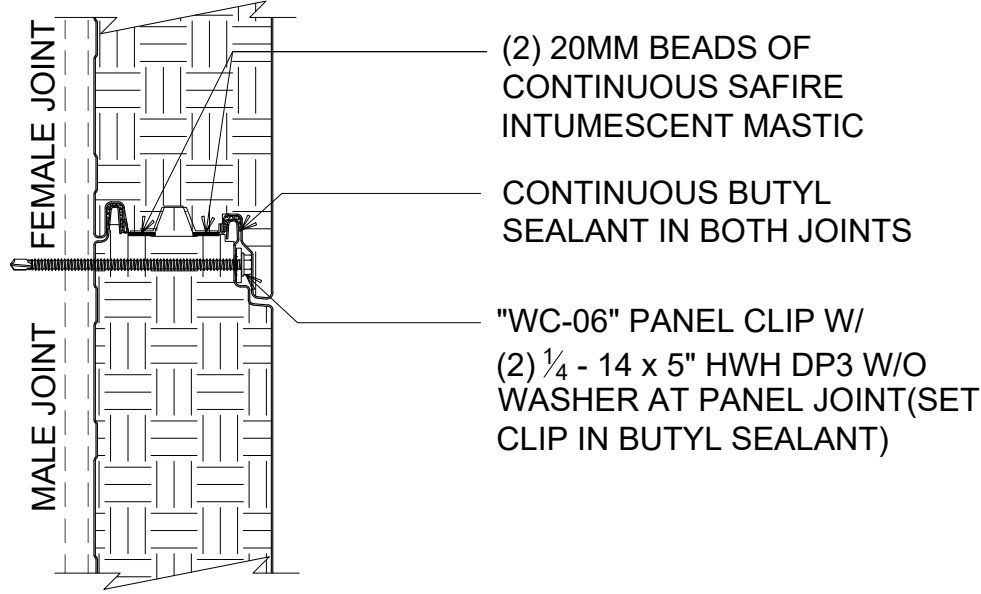
SHEET:
 1 OF 1

929 ALDRIDGE ROAD
 VACAVILLE, CA 95688
 TEL: (707) 359-2280
 FAX: (707) 359-2286
 WWW.AWIPANELS.COM



MW 4" ENGAGED PANEL JOINT

(SECTION VIEW)



WALL PANEL INSTALLATION DIRECTION →

DETAIL:

PANEL JOINT - 4" PANEL

APPLICATION:
HORIZONTAL FIRE WALL, COMMERCIAL & INDUSTRIAL
AWIP DETAIL NUMBER:
MHW-ACI-P-J-010_4E

DATE:
10/04/23
DRAWN BY:
MMF

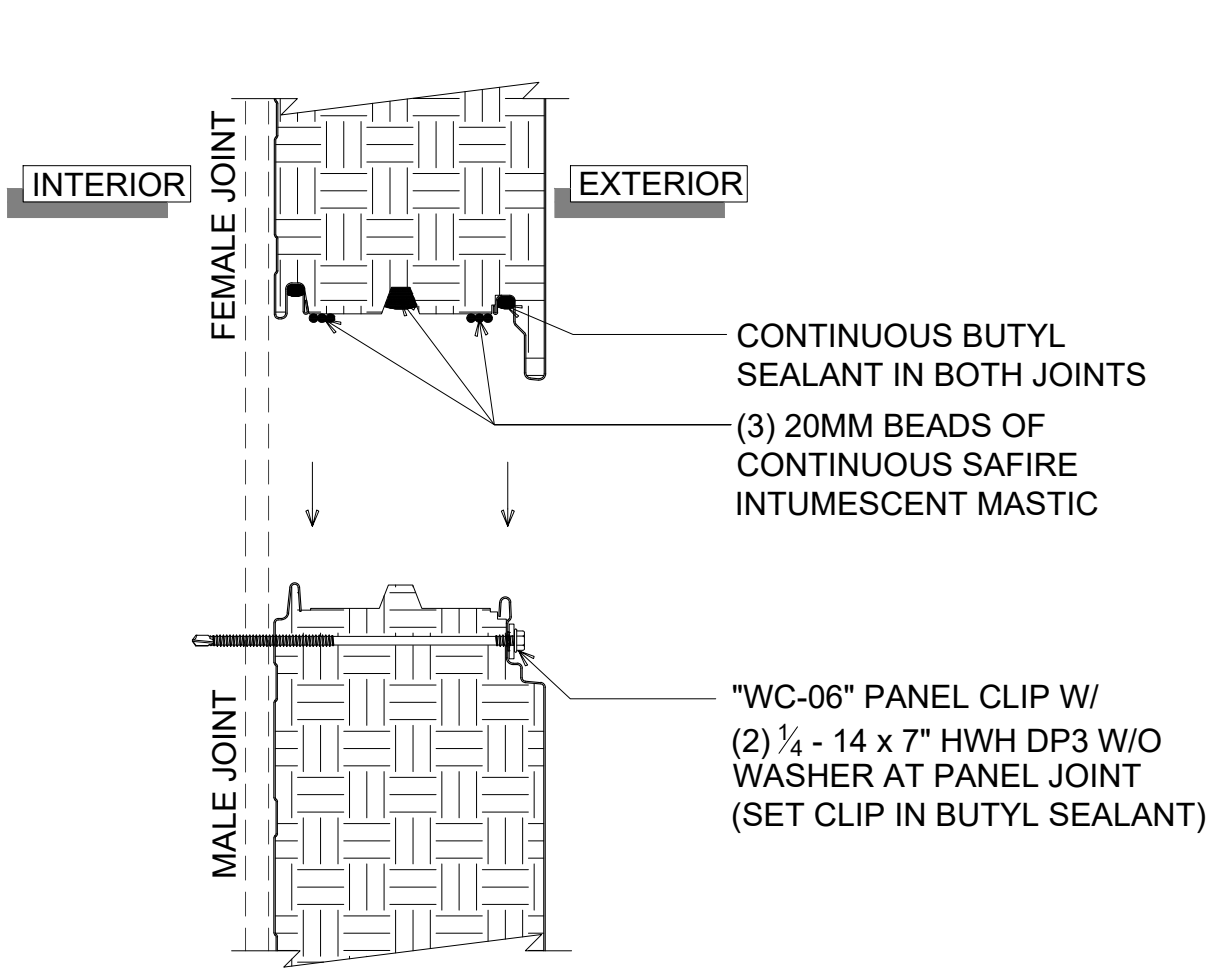
SHEET:
1 OF 1

929 ALDRIDGE ROAD
VACAVILLE, CA 95688
TEL: (707) 359-2280
FAX: (707) 359-2286
WWW.AWIPANELS.COM



MW 6" EXPANDED PANEL JOINT

(SECTION VIEW)



DETAIL:

PANEL JOINT - 6" PANEL

APPLICATION:
HORIZONTAL FIRE WALL, COMMERCIAL & INDUSTRIAL
AWIP DETAIL NUMBER:
MHW-ACI-P-J-010_6

929 ALDRIDGE ROAD
VACAVILLE, CA 95688
TEL: (707) 359-2280
FAX: (707) 359-2286
WWW.AWIPANELS.COM

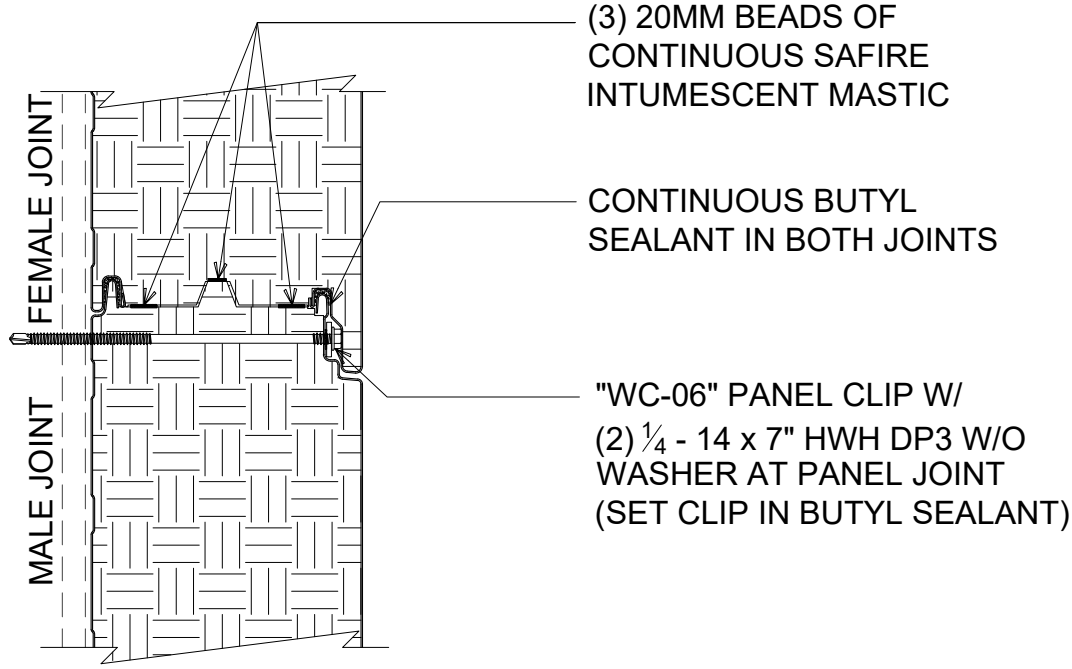


DATE:
10/04/23
DRAWN BY:
MMF

SHEET:
1
OF
1

MW 6" ENGAGED PANEL JOINT

(SECTION VIEW)



↑
WALL PANEL INSTALLATION DIRECTION

DETAIL:

PANEL JOINT - 6" PANEL

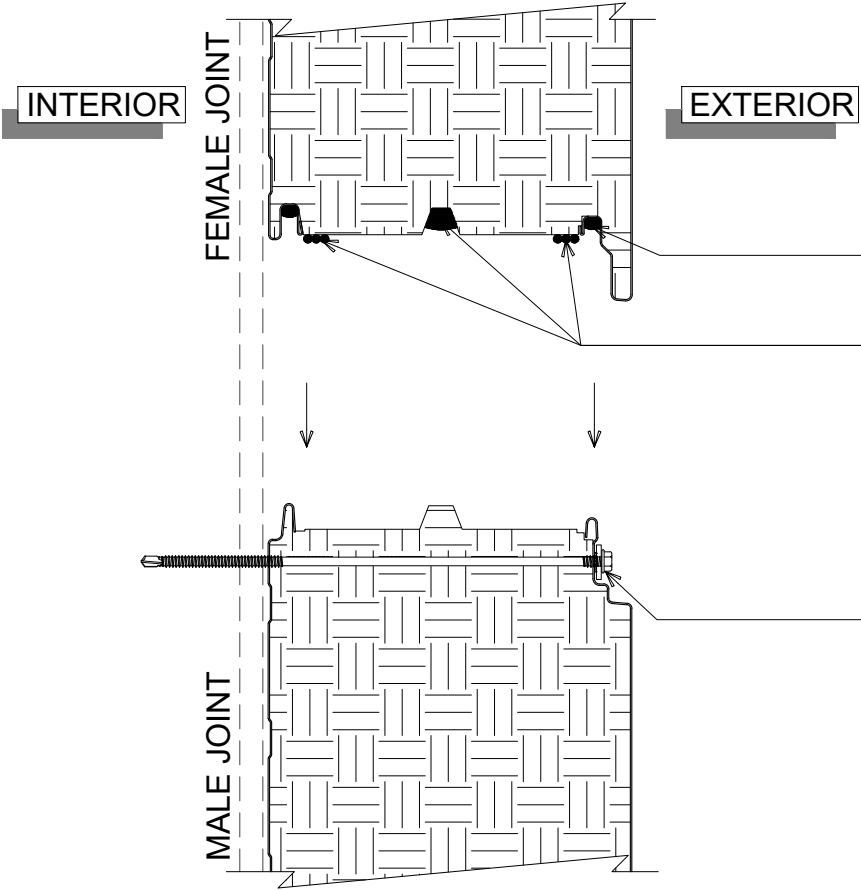
APPLICATION:
HORIZONTAL FIRE WALL, COMMERCIAL & INDUSTRIAL
AWIP DETAIL NUMBER:
MHW-ACI-P-J-010_6E

DATE:
10/02/23
DRAWN BY:
MMF

SHEET:
1 OF 1

929 ALDRIDGE ROAD
VACAVILLE, CA 95688
TEL: (707) 359-2280
FAX: (707) 359-2286
WWW.AWIPANELS.COM





CONTINUOUS BUTYL SEALANT IN BOTH JOINTS
 (3) 20MM BEADS OF CONTINUOUS SAFIRE INTUMESCENT MASTIC

"WC-06" PANEL CLIP W/
 (2) 1/4" - 14 x 10" HWH DP3 W/O WASHER AT PANEL JOINT
 (SET CLIP IN BUTYL SEALANT)

↑
 WALL PANEL INSTALLATION DIRECTION

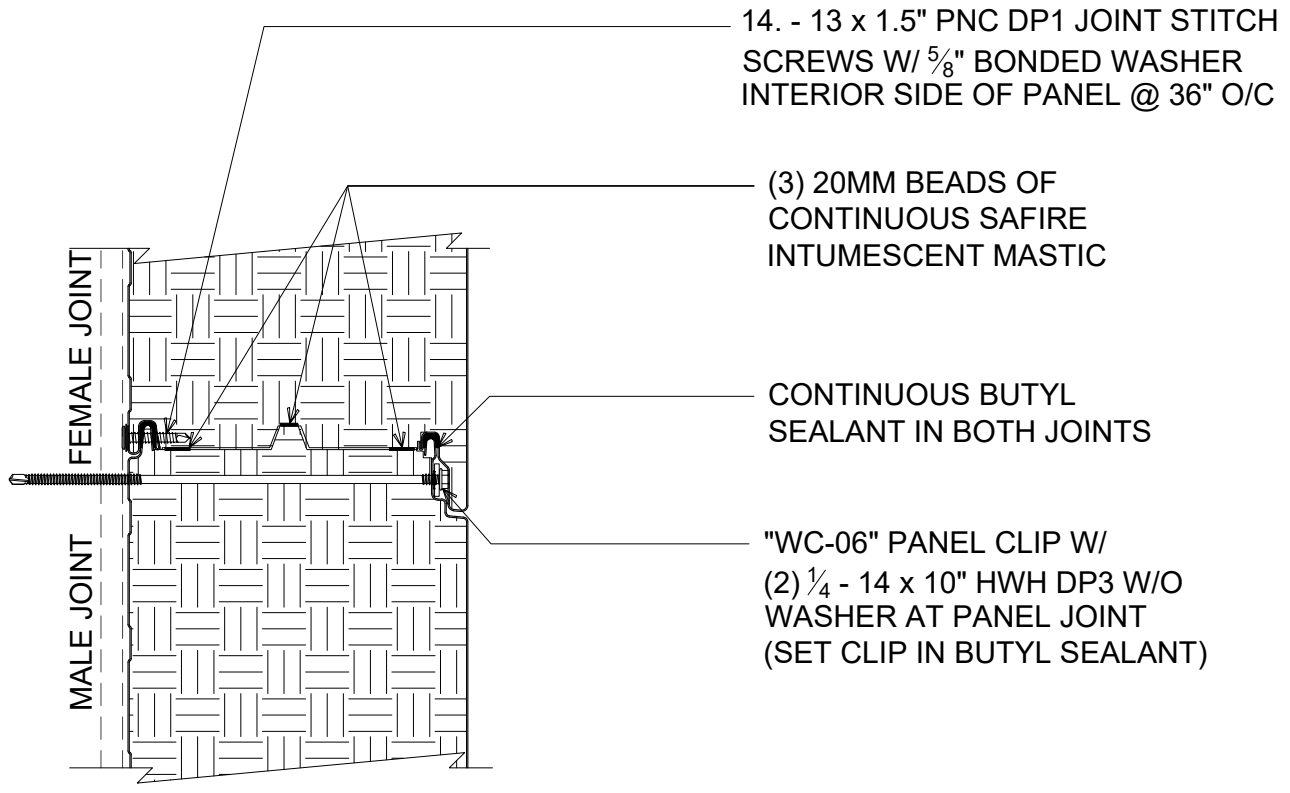
MW 8" EXPANDED PANEL JOINT

(SECTION VIEW)

DETAIL: PANEL JOINT - 8" PANEL		DATE: 10/04/23	SHEET: 1 OF 1
APPLICATION: HORIZONTAL FIRE WALL, COMMERCIAL & INDUSTRIAL		DRAWN BY: MMF	
AWIP DETAIL NUMBER: MHW-ACI-P-J-010_8			

929 ALDRIDGE ROAD
 VACAVILLE, CA 95688
 TEL: (707) 359-2280
 FAX: (707) 359-2286
 WWW.AWIPANELS.COM





14. - 13 x 1.5" PNC DP1 JOINT STITCH SCREWS W/ 5/8" BONDED WASHER INTERIOR SIDE OF PANEL @ 36" O/C

(3) 20MM BEADS OF CONTINUOUS SAFIRE INTUMESCENT MASTIC

CONTINUOUS BUTYL SEALANT IN BOTH JOINTS

"WC-06" PANEL CLIP W/ (2) 1/4 - 14 x 10" HWH DP3 W/O WASHER AT PANEL JOINT (SET CLIP IN BUTYL SEALANT)

WALL PANEL INSTALLATION DIRECTION ↑

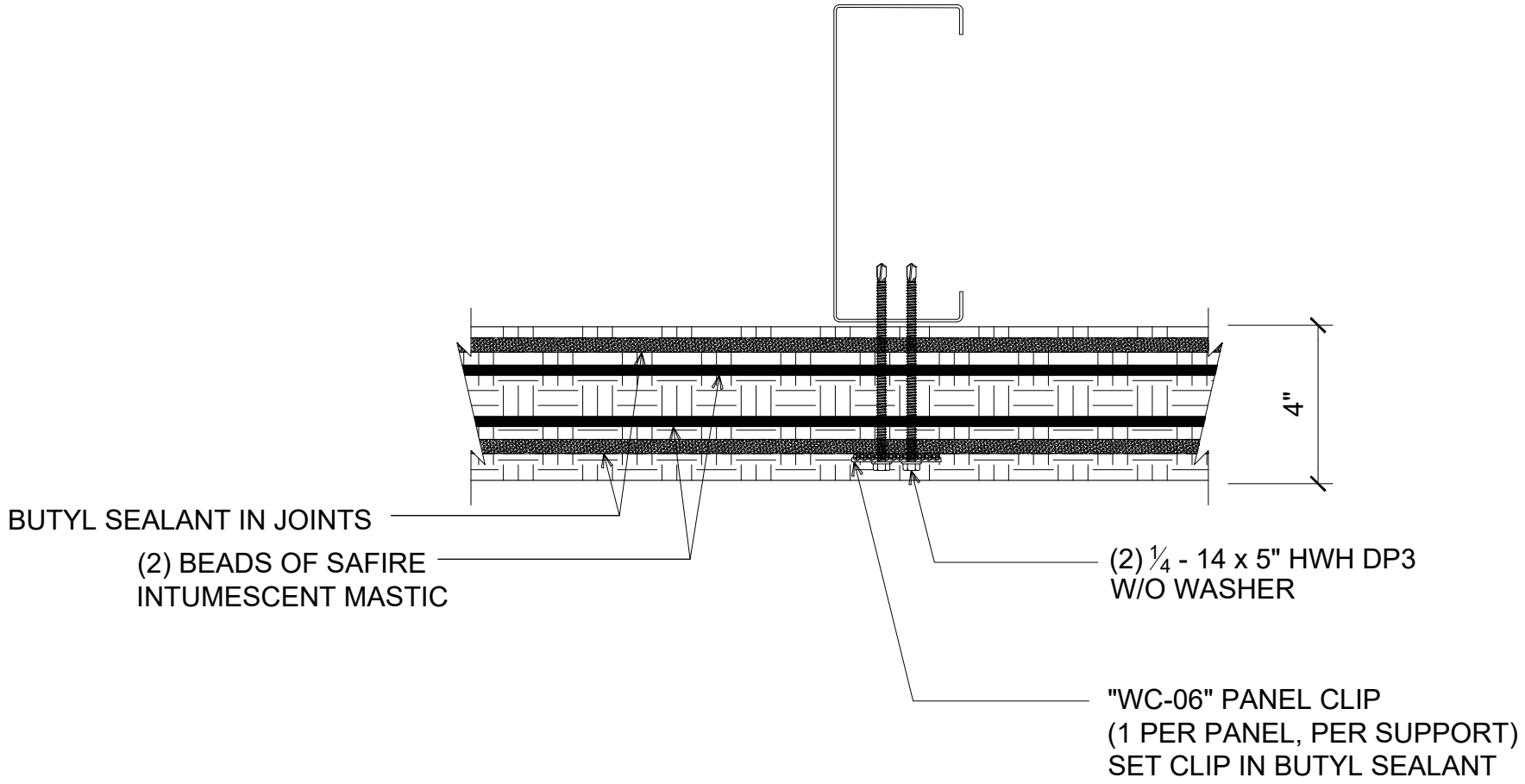
MW 8" ENGAGED PANEL JOINT

(SECTION VIEW)

DETAIL: PANEL JOINT - 8" PANEL		SHEET: 1 OF 1
APPLICATION: HORIZONTAL FIRE WALL, COMMERCIAL & INDUSTRIAL	DATE: 03/21/24	
AWIP DETAIL NUMBER: MHW-ACH-PJ-010_8E	DRAWN BY: MMF	

929 ALDRIDGE ROAD
 VACAVILLE, CA 95688
 TEL: (707) 359-2280
 FAX: (707) 359-2286
 WWW.AWIPANELS.COM





4" SEALANTS IN JOINT

(PLAN VIEW)

DETAIL:

PANEL JOINT - 4" PANEL

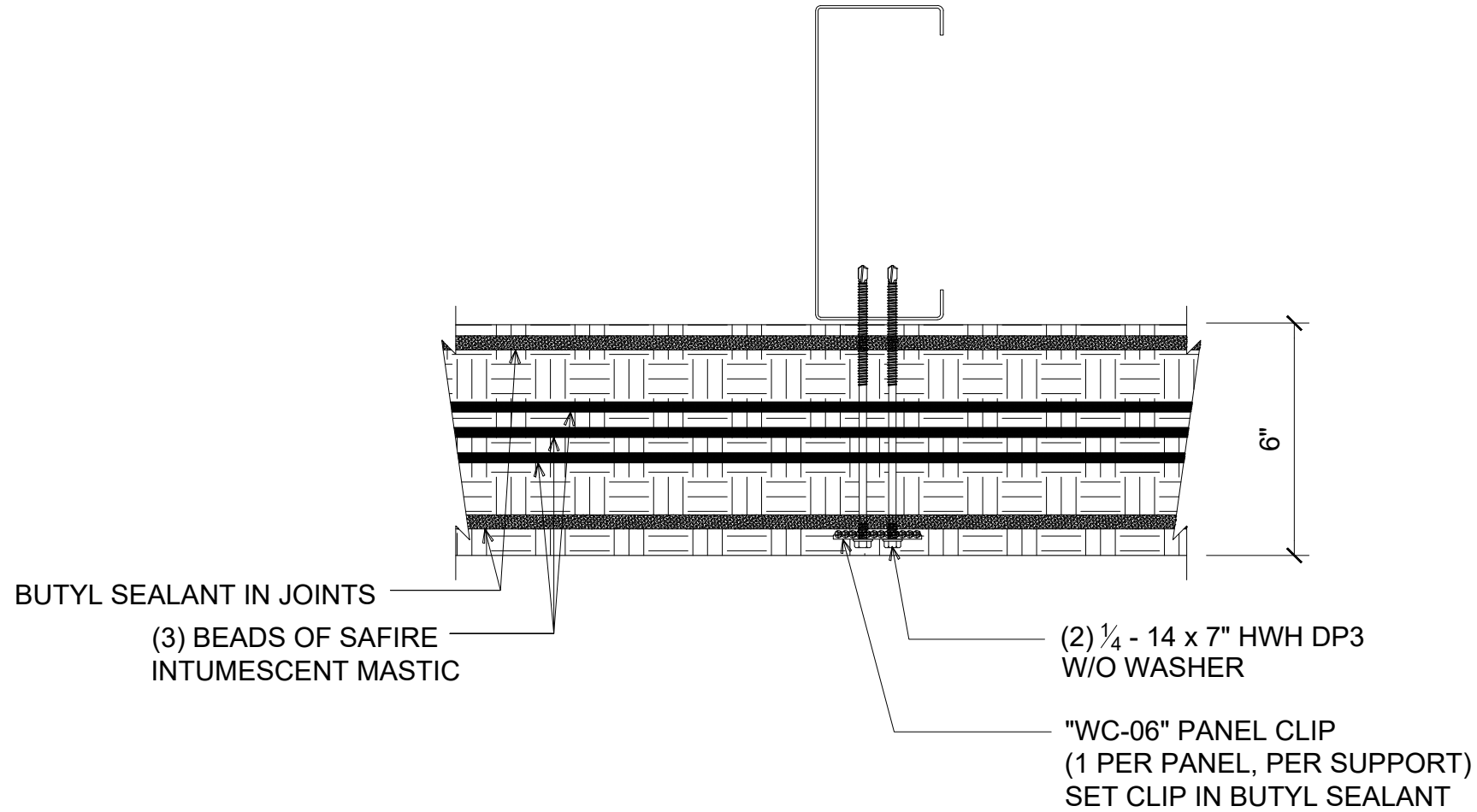
APPLICATION:
HORIZONTAL FIRE WALL, COMMERCIAL & INDUSTRIAL
AWIP DETAIL NUMBER:
MHW-ACI-P-J-011-4

DATE:
10/04/23
DRAWN BY:
MMF

SHEET:
1
OF
1

929 ALDRIDGE ROAD
VACAVILLE, CA 95688
TEL: (707) 359-2280
FAX: (707) 359-2286
WWW.AWIPANELS.COM





6" SEALANTS IN JOINT

(PLAN VIEW)

DETAIL:

PANEL JOINT - 6" PANEL

APPLICATION:
HORIZONTAL FIRE WALL, COMMERCIAL & INDUSTRIAL
AWIP DETAIL NUMBER:
MHW-ACI-P-J-011_6

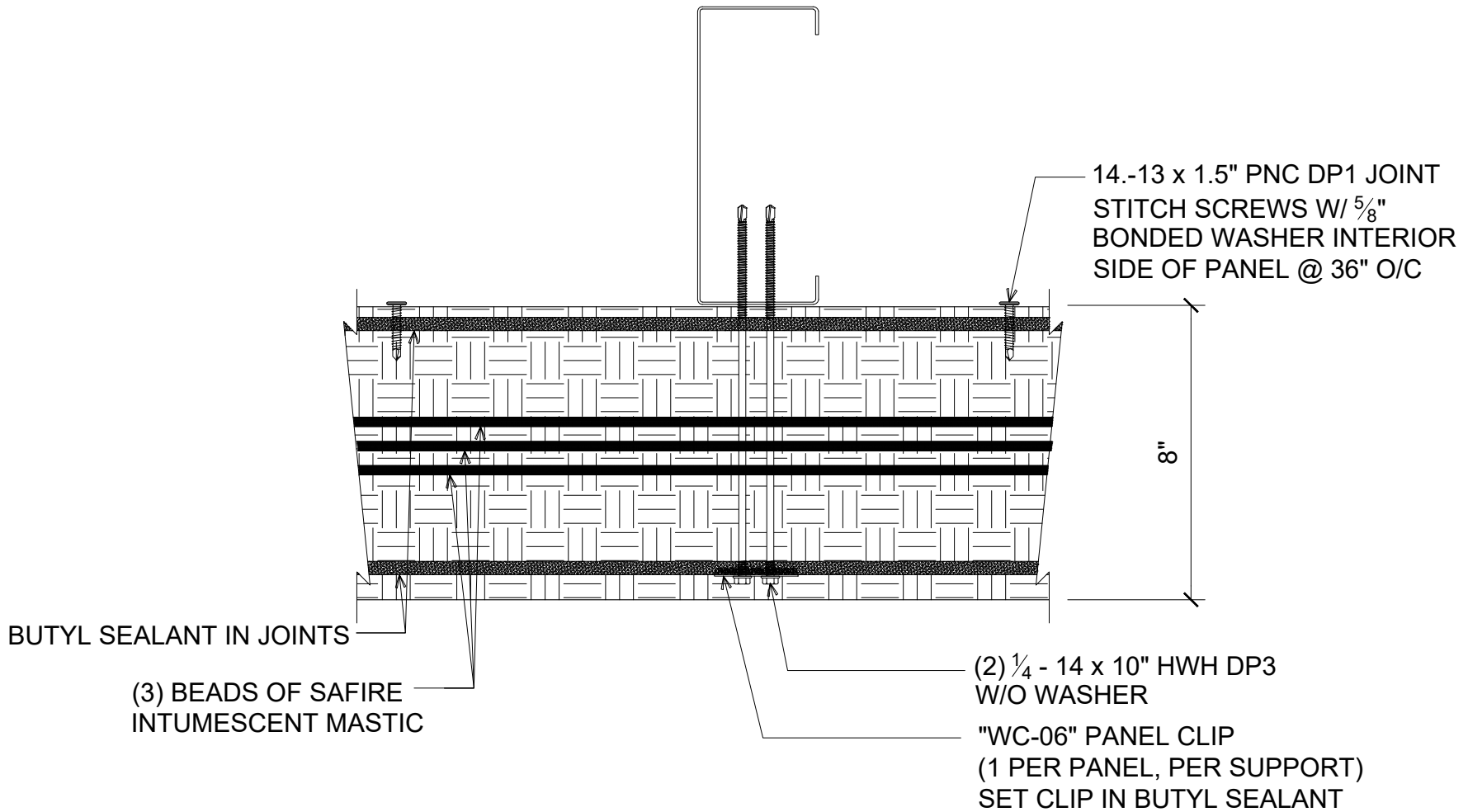
DATE:
10/04/23
DRAWN BY:
MMF

SHEET:
1
OF
1

929 ALDRIDGE ROAD
VACAVILLE, CA 95688
TEL: (707) 359-2280
FAX: (707) 359-2286
WWW.AWIPANELS.COM

All Weather
Insulated Panels





8" SEALANTS IN JOINT

DETAIL:

PANEL JOINT - 8" PANEL

APPLICATION:
HORIZONTAL FIRE WALL, COMMERCIAL & INDUSTRIAL
AWIP DETAIL NUMBER:
MHW-ACI-P-J-011_8

DATE:
11/01/23
DRAWN BY:
MMF

SHEET:
1 OF 1

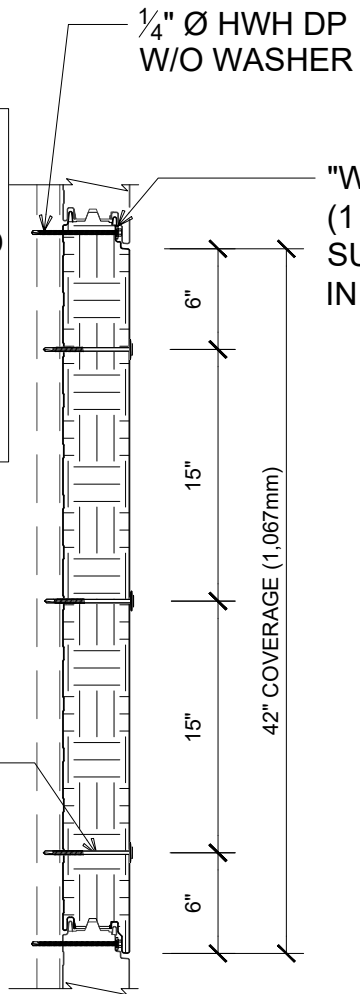
929 ALDRIDGE ROAD
VACAVILLE, CA 95688
TEL: (707) 359-2280
FAX: (707) 359-2286
WWW.AWIPANELS.COM

All Weather
Insulated Panels

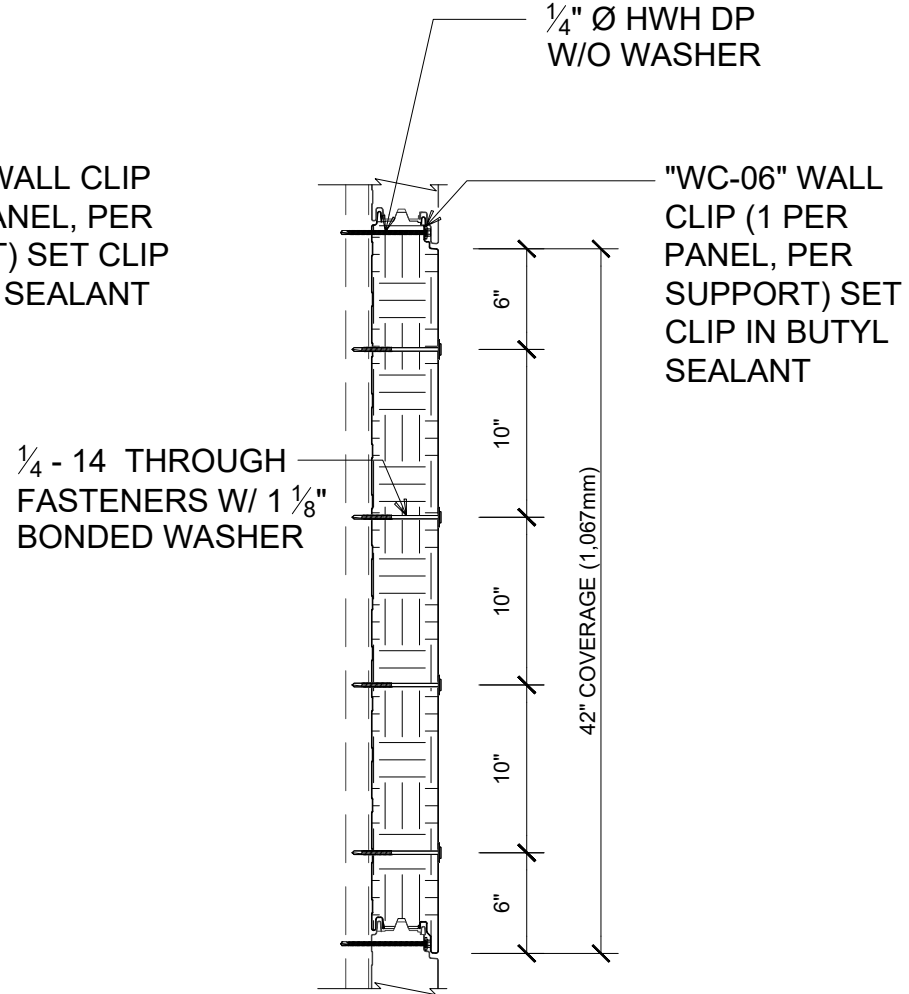


NOTE: DIMENSIONS ARE NOT SHOWN TO-SCALE.

NOTE: PANCAKE HEAD FASTENERS SHOWN APPLY TO 4" AND 6" THICK PANELS. HEX HEAD THROUGH FASTENERS ARE REQUIRED FOR STRUCTURAL CONNECTION OF PANELS WITH 8" THICKNESS.



THROUGH FASTENING REQUIREMENTS
(3 - THROUGH FASTENER PATTERN EXAMPLE)

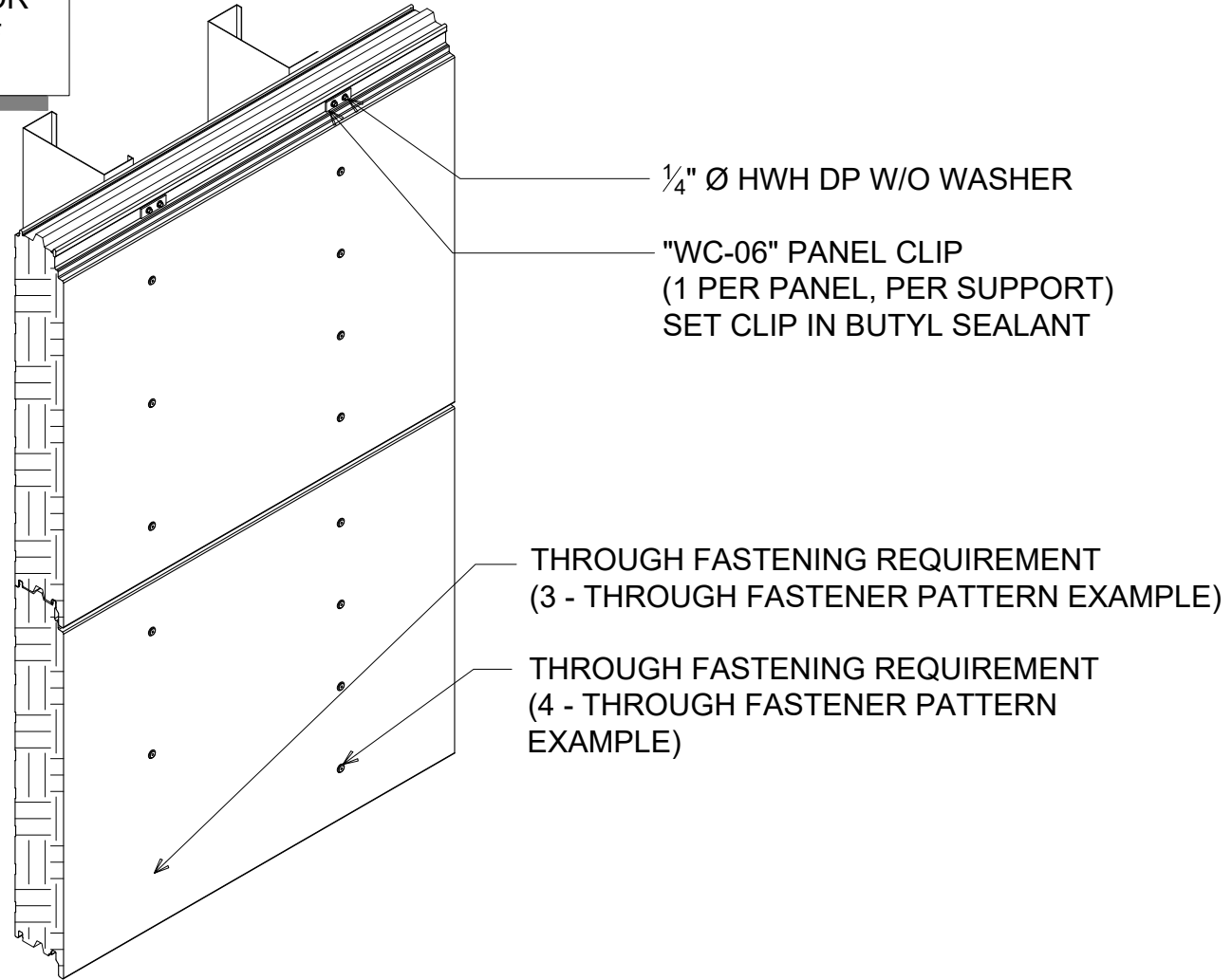


THROUGH FASTENING REQUIREMENTS
(4 - THROUGH FASTENER PATTERN EXAMPLE)

FASTENING PATTERNS (REFER TO NOTE FOR 8" THICK PANELS) (SECTION VIEW)

DETAIL:	FASTENING PATTERNS		SHEET:	1 OF 1
	APPLICATION:	DATE:		DRAWN BY:
	HORIZONTAL FIRE WALL, COMMERCIAL & INDUSTRIAL	11/02/23		MMF
929 ALDRIDGE ROAD VACAVILLE, CA 95688 TEL: (707) 359-2280 FAX: (707) 359-2286 WWW.AWIPANELS.COM		AWIP All Weather Insulated Panels		

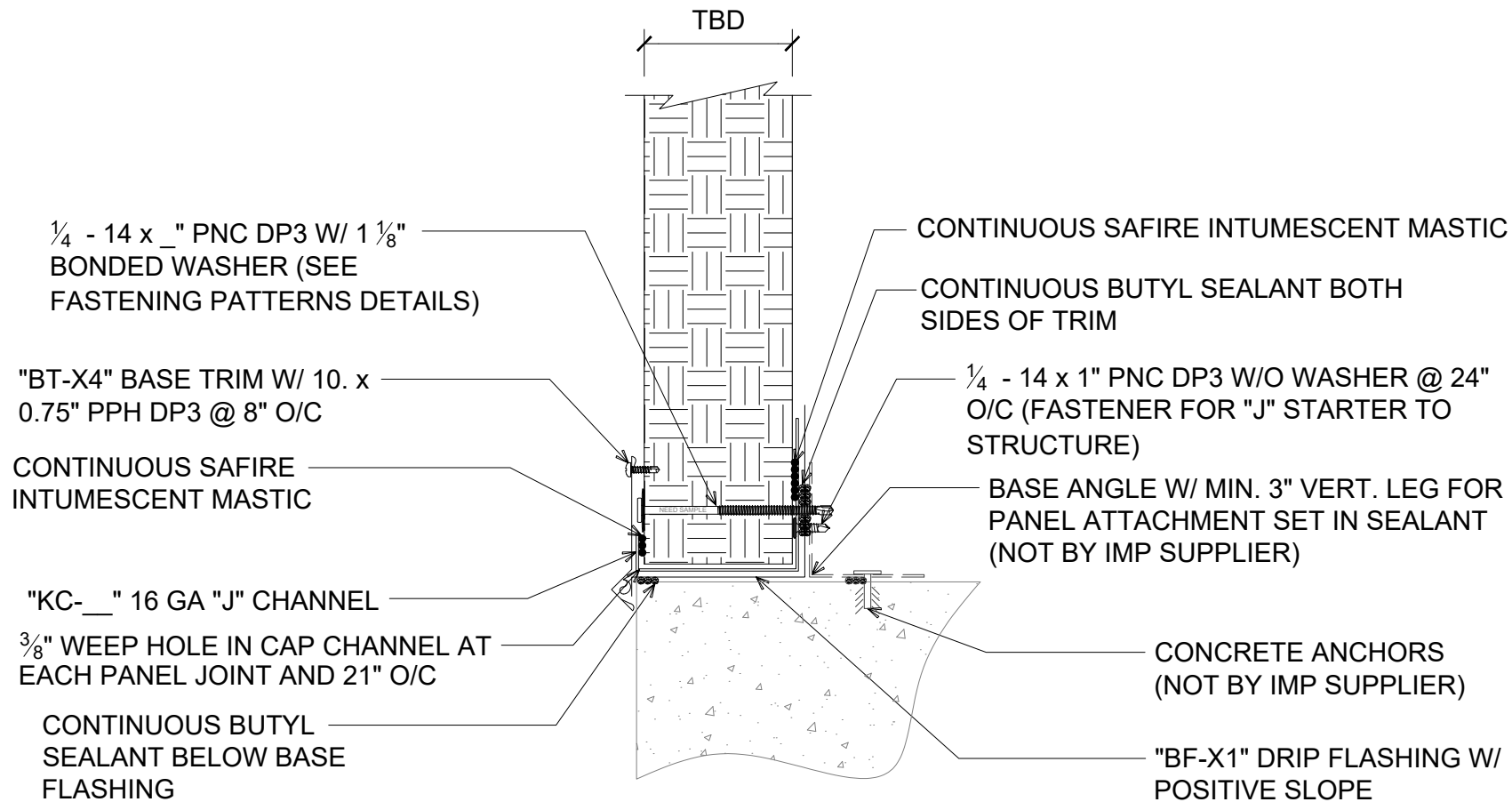
NOTE: PANCAKE HEAD FASTENERS SHOWN APPLY TO 4" AND 6" THICK PANELS. HEX HEAD THROUGH FASTENERS ARE REQUIRED FOR STRUCTURAL CONNECTION OF PANELS WITH 8" THICKNESS.



FASTENING PATTERNS ISOMETRIC (REFER TO NOTE FOR 8" THICK PANELS) (ISOMETRIC VIEW)

DETAIL:	FASTENING PATTERNS		SHEET:
	APPLICATION: HORIZONTAL FIRE WALL, COMMERCIAL & INDUSTRIAL	DATE: 10/16/23	1
	AWIP DETAIL NUMBER: MHW-ACI-ISO-010	DRAWN BY: MMF	OF 1

929 ALDRIDGE ROAD
VACAVILLE, CA 95688
TEL: (707) 359-2280
FAX: (707) 359-2286
WWW.AWIPANELS.COM



FLUSH BASE FLAT TRIM
(4" AND 6" PANELS ONLY)
 (SECTION VIEW)

DETAIL:

BASE CONDITION - FLAT FLUSH

APPLICATION:

HORIZONTAL FIRE WALL, COMMERCIAL & INDUSTRIAL

AWIP DETAIL NUMBER:

MHW-ACHC-010

929 ALDRIDGE ROAD
 VACAVILLE, CA 95688
 TEL: (707) 359-2280
 FAX: (707) 359-2286
 WWW.AWIPANELS.COM

All Weather
 Insulated Panels



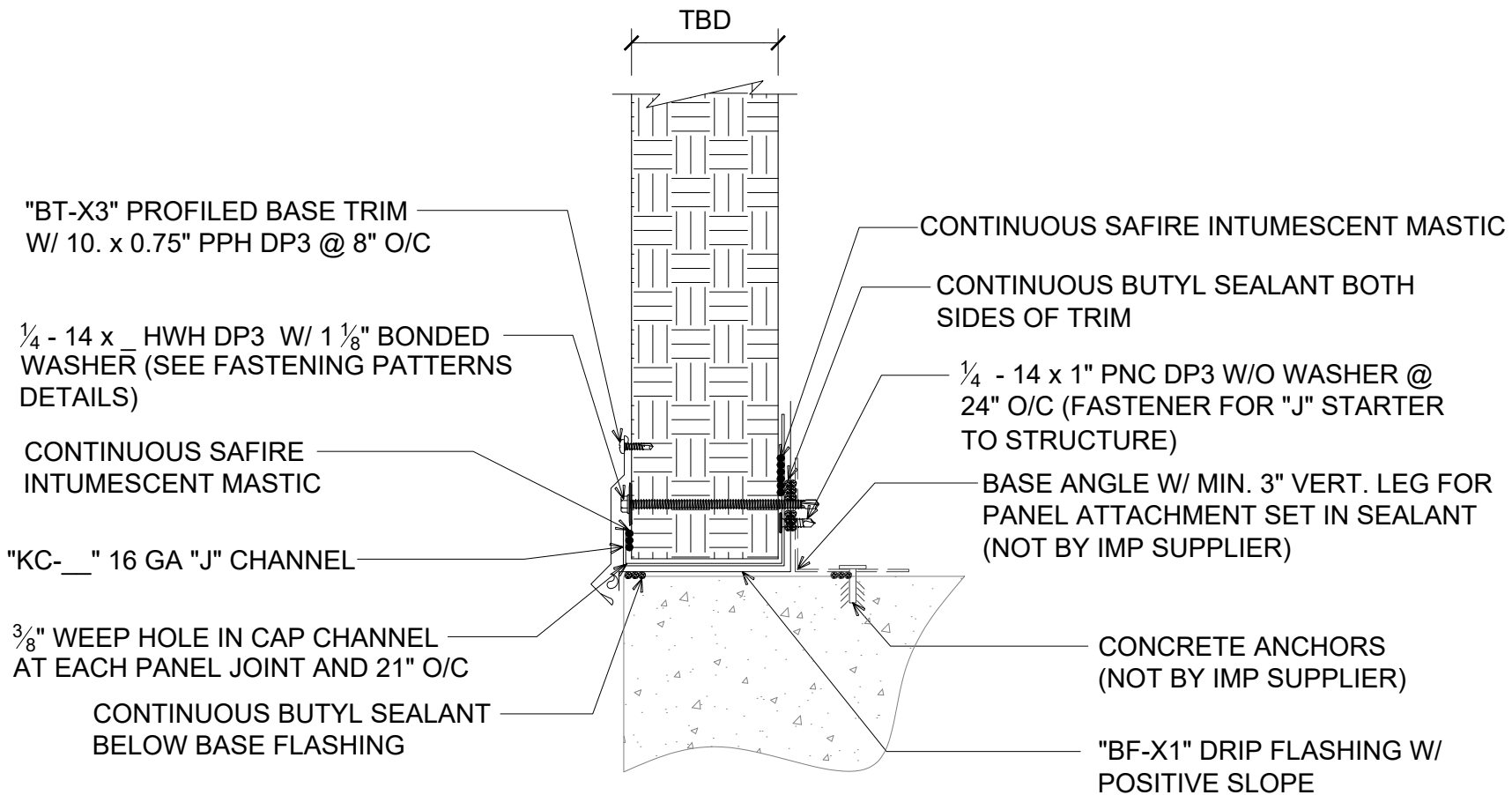
SHEET:

DATE: 04/25/24

DRAWN BY: MMF

1

OF 1



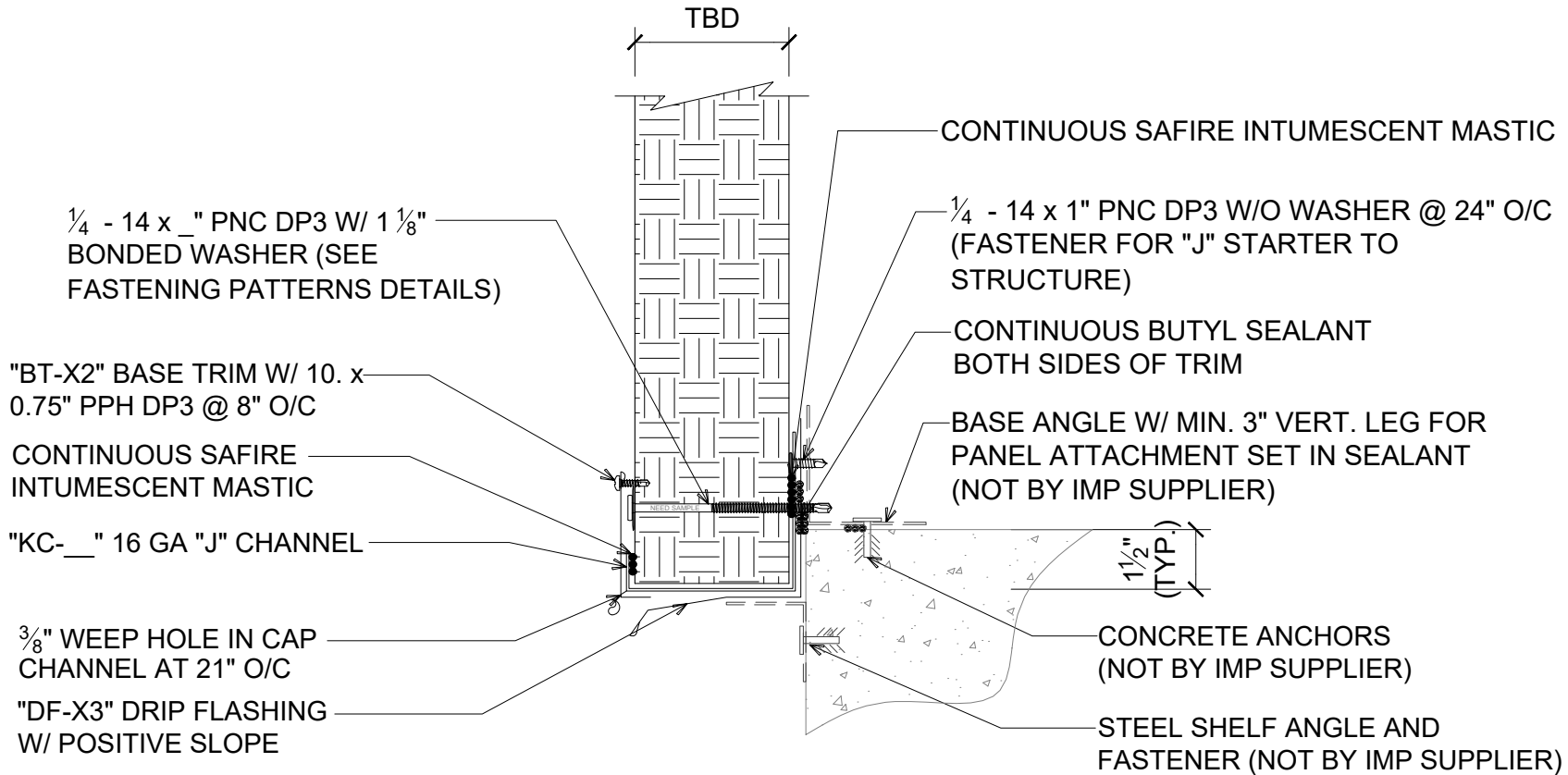
FLUSH BASE PROFILED TRIM
(REQUIRED FOR 8" PANELS)
 (SECTION VIEW)

DETAIL: BASE CONDITION - PROFILED FLUSH		SHEET: 1 OF 1
APPLICATION: HORIZONTAL FIRE WALL, COMMERCIAL & INDUSTRIAL		DATE: 04/25/24
AWIP DETAIL NUMBER: MHW-ACHC-011		DRAWN BY: MMF

929 ALDRIDGE ROAD
 VACAVILLE, CA 95688
 TEL: (707) 359-2280
 FAX: (707) 359-2286
 WWW.AWIPANELS.COM

All Weather
 Insulated Panels
AWIP

NOTE: SEE TRIM END LAP DETAILS FOR TYPICAL TRIM LAP INSTRUCTIONS



OVERHANG WITH BASE SUPPORT FLAT TRIM (4" AND 6" PANELS ONLY)
(SECTION VIEW)

DETAIL:

BASE CONDITION - FLAT OVERHANG

APPLICATION:
HORIZONTAL FIRE WALL, COMMERCIAL & INDUSTRIAL
AWIP DETAIL NUMBER:
MHW-ACHBC-012

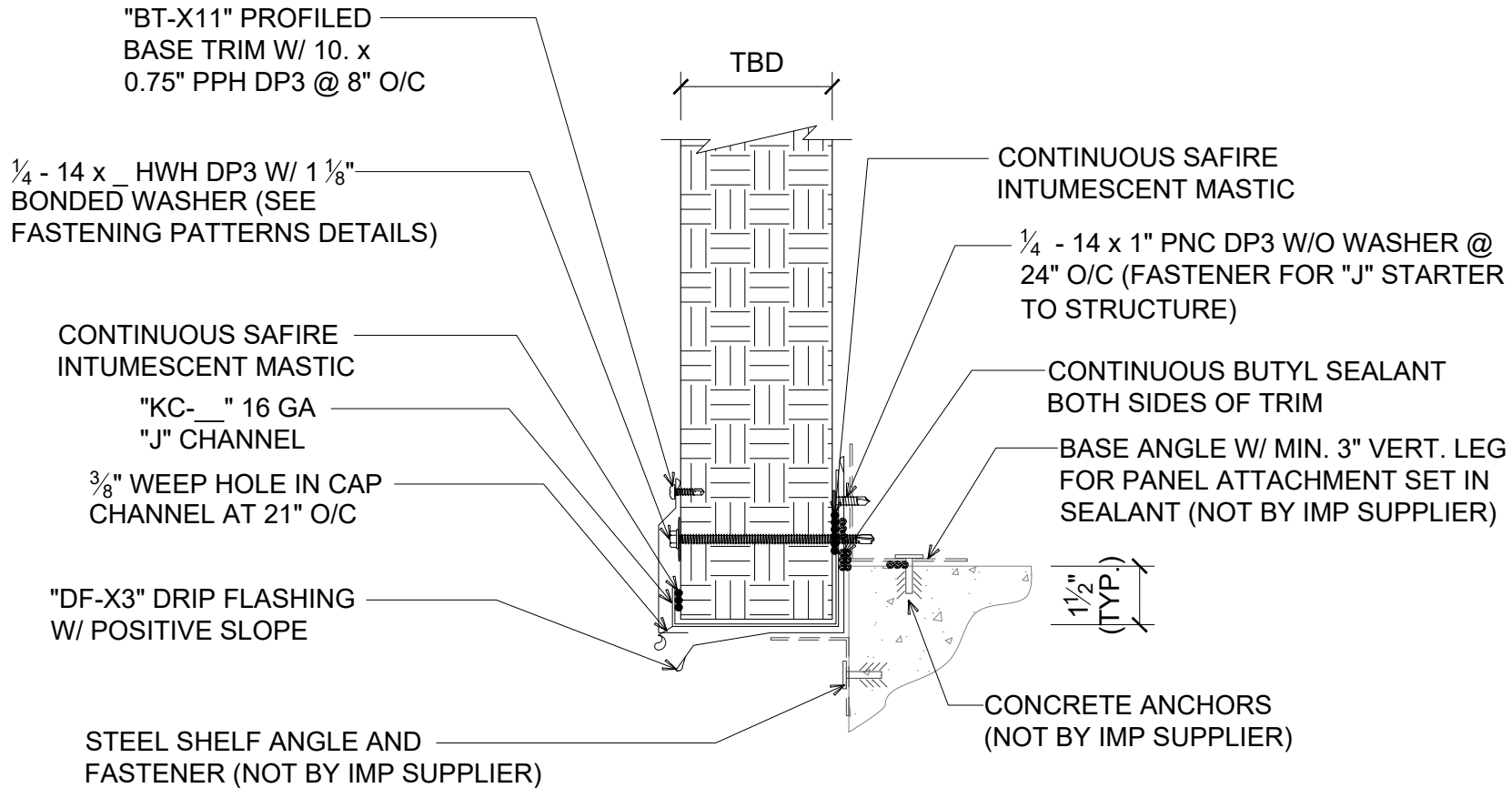
929 ALDRIDGE ROAD
VACAVILLE, CA 94688
TEL: (707) 359-2280
FAX: (707) 359-2286
WWW.AWIPANELS.COM

All Weather
Insulated Panels



SHEET:
DATE: 04/25/24
DRAWN BY: MMF
1 OF 1

NOTE: SEE TRIM END LAP DETAILS FOR TYPICAL TRIM LAP INSTRUCTIONS



**OVERHANG WITH BASE SUPPORT
PROFILED TRIM (REQD FOR 8" PANELS)**
(SECTION VIEW)

DETAIL:

BASE CONDITION - PROFILED OVERHANG

APPLICATION:

HORIZONTAL FIRE WALL, COMMERCIAL & INDUSTRIAL

AWIP DETAIL NUMBER:

MHW-ACHC-013

929 ALDRIDGE ROAD
VACAVILLE, CA 95688
TEL: (707) 359-2280
FAX: (707) 359-2286
WWW.AWIPANELS.COM

All Weather
Insulated Panels



SHEET:

DATE: 04/25/24

DRAWN BY: MMF

1 OF 1

***NOTE: 3 BEADS OF SAFIRE INTUMESCENT MASTIC REQUIRED FOR 6" AND 8" PANELS (SEE PANEL JOINT DETAILS FOR REFERENCE)**

CONTINUOUS SAFIRE INTUMESCENT MASTIC W/ MARRIAGE BEAD ACROSS PANEL

MIN. 4PCF COMPRESSED MINERAL FIBER (NOT BY IMP SUPPLIER)

HILTI CFS-S SIL GG FIRESTOP SILICONE SEALANT MINIMUM $\frac{5}{8}$ " DEPTH (NOT BY IMP SUPPLIER)

CONTINUOUS SAFIRE INTUMESCENT MASTIC W/ MARRIAGE BEAD ACROSS PANEL

"KA-01" 16 GA FRONT CAP CHANNEL W/ $\frac{1}{4}$ - 14 x 1" PNC DP3 @ 24" O/C

"OC-X3" CORNER TRIM W/ 10. x 0.75" PPH DP3 @ 8" O/C

CONTINUOUS BUTYL SEALANT

CONTINUOUS BUTYL SEALANT IN JOINTS

*(2) 20MM BEADS OF CONTINUOUS SAFIRE INTUMESCENT MASTIC

"KC-__" 16 GA "J" CHANNEL W/ $\frac{1}{4}$ - 14 x 1" PNC DP3 W/O WASHER @ 24" O/C

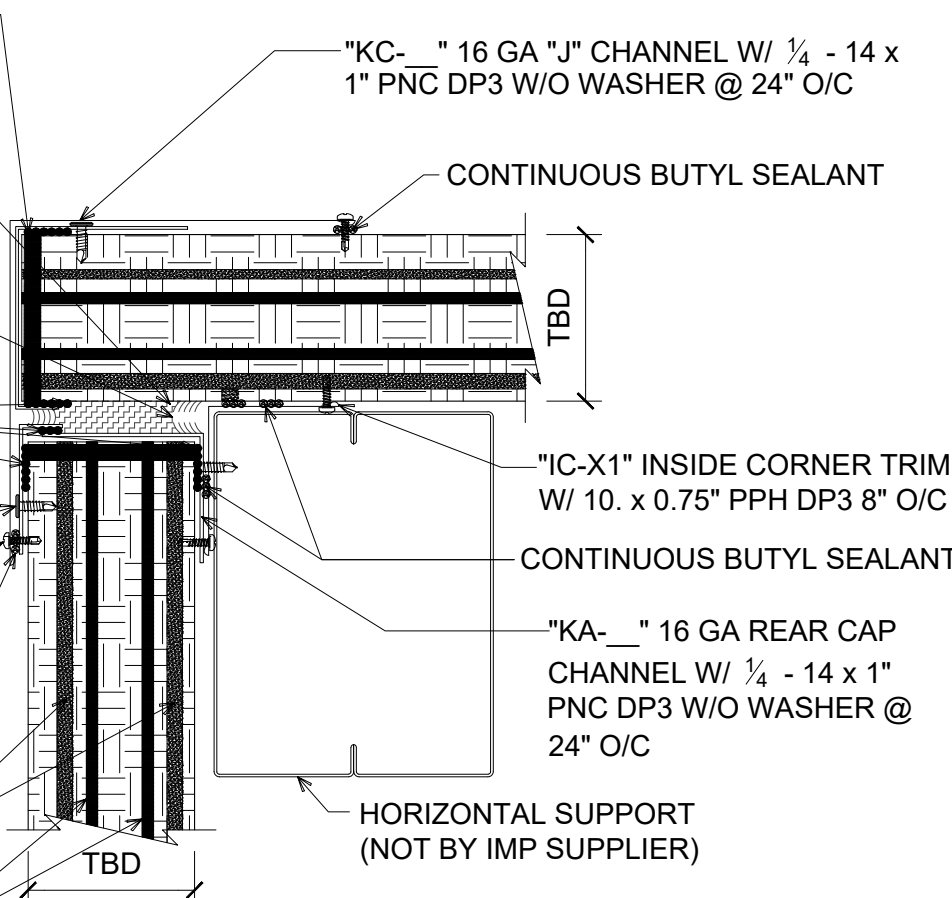
CONTINUOUS BUTYL SEALANT

"IC-X1" INSIDE CORNER TRIM W/ 10. x 0.75" PPH DP3 8" O/C

CONTINUOUS BUTYL SEALANT

"KA-__" 16 GA REAR CAP CHANNEL W/ $\frac{1}{4}$ - 14 x 1" PNC DP3 W/O WASHER @ 24" O/C

HORIZONTAL SUPPORT (NOT BY IMP SUPPLIER)



#J OUTSIDE CORNER @ PANEL JOINT FLAT TRIM (4" AND 6" PANEL ONLY)
(PLAN VIEW)

DETAIL:

CORNER TRANSITION - FLAT OUTSIDE

APPLICATION:

HORIZONTAL FIRE WALL, COMMERCIAL & INDUSTRIAL

AWIP DETAIL NUMBER:

MHW-ACHT-010_J

SHEET:

DATE: 04/25/24

DRAWN BY: MMF

1

OF 1

929 ALDRIDGE ROAD
VACAVILLE, CA 95688
TEL: (707) 359-2280
FAX: (707) 359-2286
WWW.AWIPANELS.COM

All Weather
Insulated Panels



"KC-__" 16 GA "J" CHANNEL W/ 1/4 -14 x1" PNC DP3 W/O WASHER @ 24" O/C

CONTINUOUS SAFIRE INTUMESCENT MASTIC

MIN. 4 PCF COMPRESSED MINERAL FIBER (NOT BY IMP SUPPLIER)

HILTI CFS-S SIL GG FIRESTOP SILICONE SEALANT MINIMUM 5/8" DEPTH (NOT BY IMP SUPPLIER)

CONTINUOUS SAFIRE INTUMESCENT MASTIC

"KA-01" 16 GA FRONT CAP CHANNEL W/ 1/4 - 14 x 1" PNC DP3 W/O WASHER @ 24" O/C

"OC-X3" CORNER TRIM W/ 10. x 0.75" PPH DP3 @ 8" O/C

CONTINUOUS BUTYL SEALANT

() 1/4 - 14 x _" PNC DP3 THROUGH FASTENER W/ 1 1/8" BONDED WASHER PER PANEL (SEE FASTENING PATTERNS DETAILS)

CONTINUOUS BUTYL SEALANT

TBD

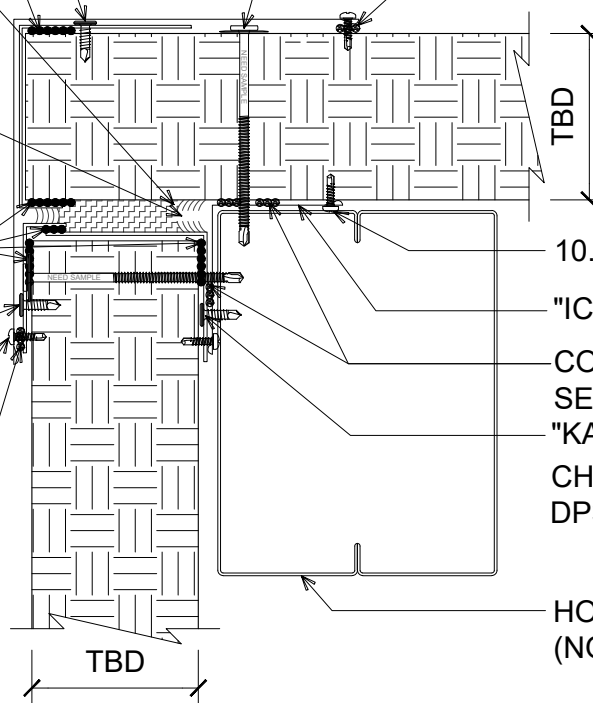
10. x 0.75" PPH DP3 @ 8" O/C

"IC-X1" INSIDE CORNER TRIM

CONTINUOUS BUTYL SEALANT

"KA-__" 16 GA REAR CAP CHANNEL W/ 1/4 - 14 x 1" PNC DP3 W/O WASHER @ 24" O/C

HORIZONTAL SUPPORT (NOT BY IMP SUPPLIER)



#M OUTSIDE CORNER FLAT TRIM @ MID PANEL (4" AND 6" PANEL ONLY)
(PLAN VIEW)

DETAIL:

CORNER TRANSITION - FLAT OUTSIDE

APPLICATION:

HORIZONTAL FIRE WALL, COMMERCIAL & INDUSTRIAL

AWIP DETAIL NUMBER:

MHW-ACHCT-010_M

SHEET:

DATE: 04/25/24

DRAWN BY: MMF

1

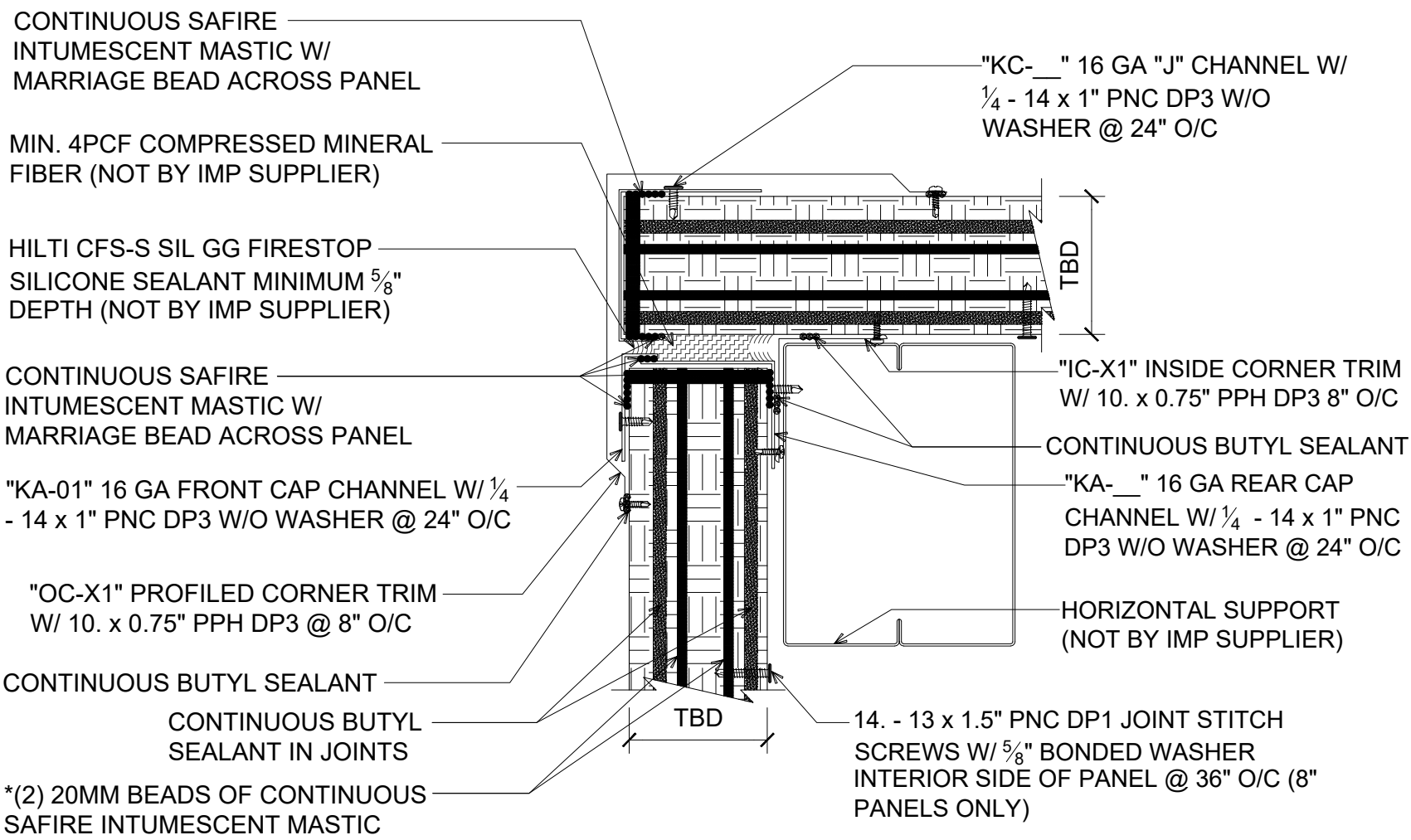
OF 1

929 ALDRIDGE ROAD
VACAVILLE, CA 95688
TEL: (707) 359-2280
FAX: (707) 359-2286
WWW.AWIPANELS.COM

All Weather
Insulated Panels



***NOTE: 3 BEADS OF SAFIRE INTUMESCENT MASTIC REQUIRED FOR 6" AND 8" PANELS (SEE PANEL JOINT DETAILS FOR REFERENCE)**



#J OUTSIDE CORNER PROFILED TRIM @ PANEL JOINT (REQUIRED FOR 8" PANEL)
(PLAN VIEW)

DETAIL: CORNER TRANSITION - PROFILED OUTSIDE	DATE: 04/25/24	SHEET: 1 OF 1
	APPLICATION: HORIZONTAL FIRE WALL, COMMERCIAL & INDUSTRIAL	DRAWN BY: MMF
AWIP DETAIL NUMBER: MHW-ACHCT-011_J		
<p>929 ALDRIDGE ROAD VACAVILLE, CA 95688 TEL: (707) 359-2280 FAX: (707) 359-2286 WWW.AWIPANELS.COM</p> <p>All Weather Insulated Panels</p> <p>AWIP</p>		

"KC-__" 16 GA "J" CHANNEL W/ 1/4
 - 14 x 1" PNC DP3 W/O WASHER
 @ 24" O/C

CONTINUOUS SAFIRE
 INTUMESCENT MASTIC

MIN. 4PCF COMPRESSED MINERAL
 FIBER (NOT BY IMP SUPPLIER)

HILTI CFS-S SIL GG FIRESTOP
 SILICONE SEALANT MINIMUM 5/8"
 DEPTH (NOT BY IMP SUPPLIER)

CONTINUOUS SAFIRE
 INTUMESCENT MASTIC

() 1/4 - 14 x _ HWH DP3 W/ 1 1/8"
 BONDED WASHER

"OC-X1" PROFILED CORNER TRIM
 W/ 10. x 0.75" PPH DP3 @ 8" O/C

CONTINUOUS BUTYL SEALANT

() 1/4 - 14 x _ HWH DP3 W/ 1 1/8" BONDED
 WASHER PER PANEL (SEE FASTENING
 PATTERNS DETAILS)

CONTINUOUS BUTYL SEALANT

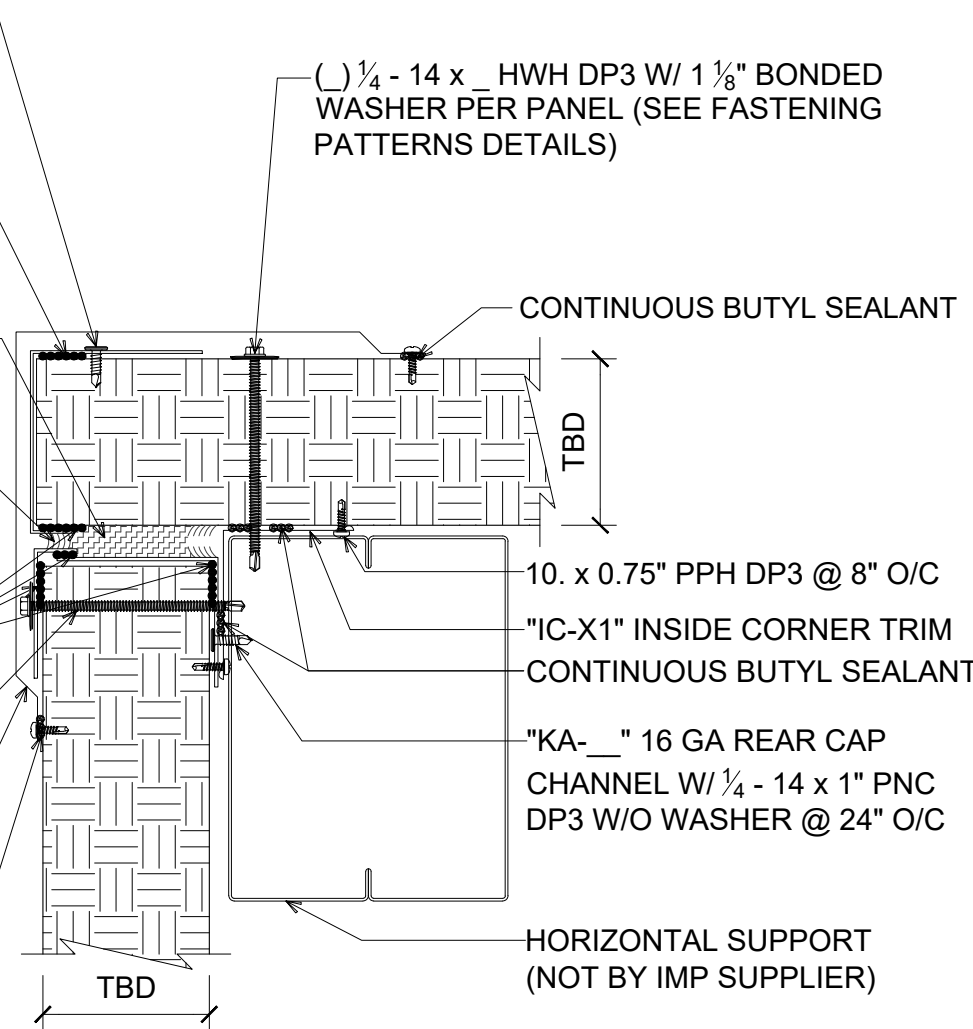
10. x 0.75" PPH DP3 @ 8" O/C

"IC-X1" INSIDE CORNER TRIM

CONTINUOUS BUTYL SEALANT

"KA-__" 16 GA REAR CAP
 CHANNEL W/ 1/4 - 14 x 1" PNC
 DP3 W/O WASHER @ 24" O/C

HORIZONTAL SUPPORT
 (NOT BY IMP SUPPLIER)



#M OUTSIDE CORNER PROFILED TRIM @ MID
 PANEL (REQUIRED FOR 8" PANEL)
 (PLAN VIEW)

DETAIL: CORNER TRANSITION - PROFILED OUTSIDE		SHEET: 1 OF 1
APPLICATION: HORIZONTAL FIRE WALL, COMMERCIAL & INDUSTRIAL	DATE: 04/25/24	DRAWN BY: MMF
AWIP DETAIL NUMBER: MHW-ACH-CT-011_M		

929 ALDRIDGE ROAD
 VACAVILLE, CA 95688
 TEL: (707) 359-2280
 FAX: (707) 359-2286
 WWW.AWIPANELS.COM

***NOTE: 3 BEADS OF SAFIRE INTUMESCENT MASTIC REQUIRED FOR 6" AND 8" PANELS (SEE PANEL JOINT DETAILS FOR REFERENCE)**

"KC-__" 16 GA "J" CHANNEL W/ 1/4" - 14 x 1" PNC DP3 W/O WASHER @ 24" O/C

"OC-X2" OUTSIDE CORNER TRIM

CONTINUOUS SAFIRE INTUMESCENT MASTIC W/ MARRIAGE BEAD ACROSS PANEL JOINT

MIN. 4PCF COMPRESSED MINERAL FIBER (NOT BY IMP SUPPLIER)
 HILTI CFS-S SIL GG FIRESTOP SILICONE SEALANT MINIMUM 5/8" DEPTH (NOT BY IMP SUPPLIER)

CONTINUOUS SAFIRE INTUMESCENT MASTIC W/ MARRIAGE BEAD ACROSS PANEL JOINT

CONTINUOUS BUTYL SEALANT

"KA-__" 16 GA REAR CAP CHANNEL W/ 1/4" - 14 x 1" PNC DP3 W/O WASHER @ 24" O/C

10. x 0.75" PPH DP3 @ 8" O/C

CONTINUOUS BUTYL SEALANT IN JOINTS

*(2) 20MM BEADS OF CONTINUOUS SAFIRE INTUMESCENT MASTIC

CONTINUOUS BUTYL SEALANT
 10. x 0.75" PPH DP3 @ 8" O/C

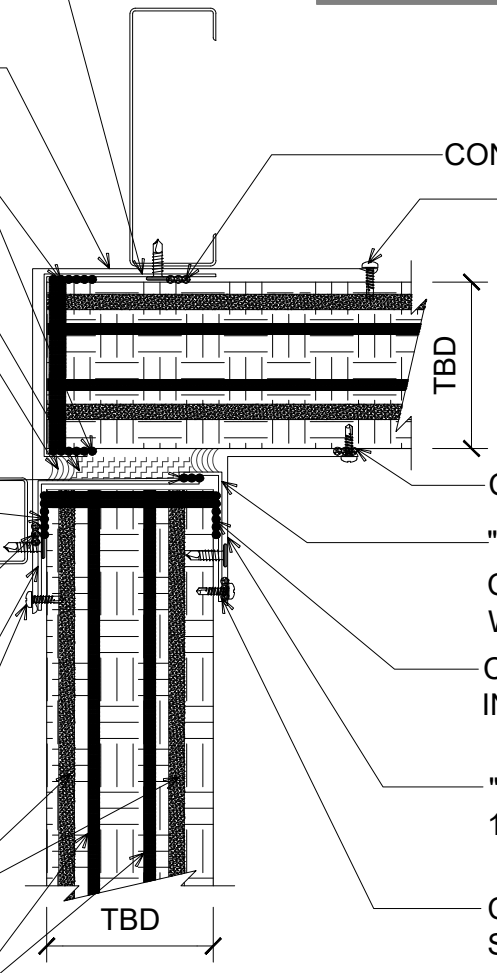
CONTINUOUS BUTYL SEALANT

"KA-01" 16 GA FRONT CAP CHANNEL W/ 1/4" - 14 x 1" PNC DP3 W/O WASHER @ 24" O/C



CONTINUOUS SAFIRE INTUMESCENT MASTIC

"IC-X2" INSIDE CORNER TRIM W/ 10. x 0.75" PPH DP3 @ 8" O/C

CONTINUOUS BUTYL SEALANT



#J INSIDE CORNER FLAT TRIM @ PANEL JOINT (4" AND 6" PANEL ONLY)
 (PLAN VIEW)

DETAIL: CORNER TRANSITION - FLAT INSIDE		SHEET: 1 OF 1
APPLICATION: HORIZONTAL FIRE WALL, COMMERCIAL & INDUSTRIAL	DATE: 04/25/24	DRAWN BY: MMF
AWIP DETAIL NUMBER: MHW-ACH-CT-012_J		
929 ALDRIDGE ROAD VACAVILLE, CA 95688 TEL: (707) 359-2280 FAX: (707) 359-2286 WWW.AWIPANELS.COM		
 		

"KC-__" 16 GA "J" CHANNEL W/ 1/4 - 14 x 1" PNC DP3 W/O WASHER @ 24" O/C

"OC-X2" OUTSIDE CORNER TRIM

CONTINUOUS SAFIRE INTUMESCENT MASTIC

MIN. 4PCF COMPRESSED MINERAL FIBER (NOT BY IMP SUPPLIER)

HILTI CFS-S SIL GG FIRESTOP SILICONE SEALANT MINIMUM 5/8" DEPTH (NOT BY IMP SUPPLIER)

CONTINUOUS SAFIRE INTUMESCENT MASTIC

CONTINUOUS BUTYL SEALANT

"KA-__" 16 GA REAR CAP CHANNEL W/ 1/4 - 14 x 1" PNC DP3 W/O WASHER @ 24" O/C

10. x 0.75" PPH DP3 @ 8" O/C

() 1/4 - 14 x _ " PNC DP3 W/ 1 1/8" BONDED WASHER PER PANEL (SEE FASTENING PATTERNS DETAILS)

() 1/4 - 14 x _ " PNC DP3 W/ 1 1/8" BONDED WASHER PER PANEL (SEE FASTENING PATTERNS DETAILS)

CONTINUOUS BUTYL SEALANT 10. x 0.75" PPH DP3 @ 8" O/C

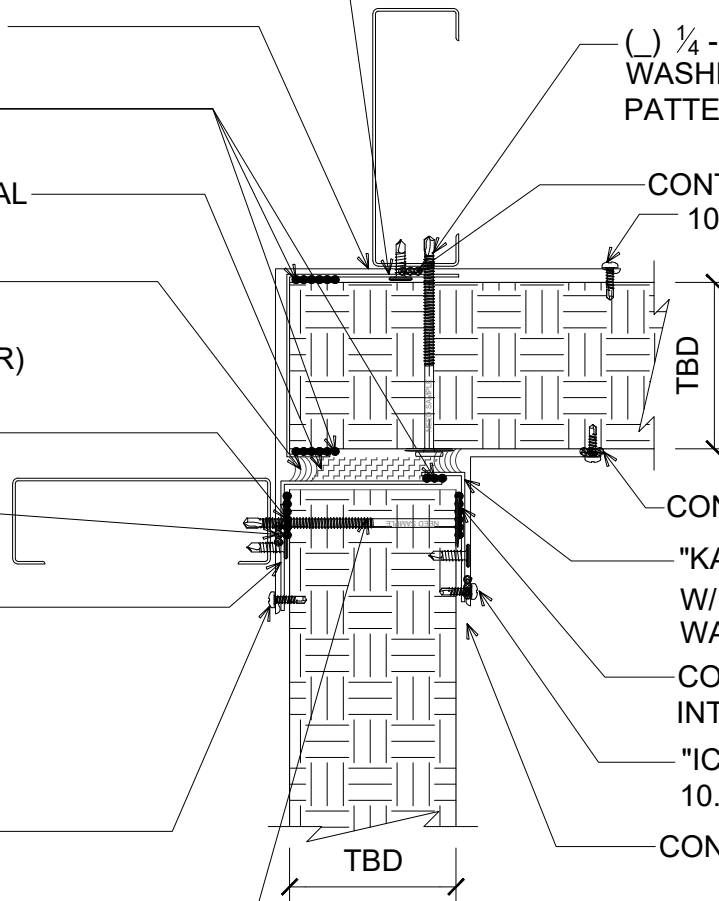
CONTINUOUS BUTYL SEALANT

"KA-__" 16 GA FRONT CAP CHANNEL W/ 1/4 - 14 x 1" PNC DP3 W/O WASHER @ 24" O/C

CONTINUOUS SAFIRE INTUMESCENT MASTIC

"IC-X2" INSIDE CORNER TRIM W/ 10. x 0.75" PPH DP3 @ 8" O/C

CONTINUOUS BUTYL SEALANT



#M INSIDE CORNER FLAT TRIM @ MID PANEL (4" AND 6" PANEL ONLY)

(PLAN VIEW)

DETAIL:

CORNER TRANSITION - FLAT INSIDE

APPLICATION:

HORIZONTAL FIRE WALL, COMMERCIAL & INDUSTRIAL

AWIP DETAIL NUMBER:

MHW-ACHCT-012_M

929 ALDRIDGE ROAD
VACAVILLE, CA 95688
TEL: (707) 359-2280
FAX: (707) 359-2286
WWW.AWIPANELS.COM

All Weather
Insulated Panels



SHEET:

DATE: 04/25/24

DRAWN BY: MMF

1

OF 1

***NOTE: 3 BEADS OF SAFIRE INTUMESCENT MASTIC REQUIRED FOR 6" AND 8" PANELS (SEE PANEL JOINT DETAILS FOR REFERENCE)**

"KC-__" 16 GA "J" CHANNEL W/ 1/4 - 14 x 1" PNC DP3 W/O WASHER @ 24" O/C

"OC-X2" OUTSIDE CORNER TRIM

CONTINUOUS SAFIRE INTUMESCENT MASTIC W/ MARRIAGE BEAD ACROSS PANEL JOINT

MIN. 4PCF COMPRESSED MINERAL FIBER (NOT BY IMP SUPPLIER)

HILTI CFS-S SIL GG FIRESTOP SILICONE SEALANT MINIMUM 5/8" DEPTH (NOT BY IMP SUPPLIER)

CONTINUOUS SAFIRE INTUMESCENT MASTIC W/ MARRIAGE BEAD ACROSS PANEL JOINT

CONTINUOUS BUTYL SEALANT

"KA-__" 16 GA REAR CAP CHANNEL W/ 1/4 - 14 x 1" PNC DP3 W/O WASHER @ 24" O/C

10. x 0.75" PPH DP3 @ 8" O/C

CONTINUOUS BUTYL SEALANT IN JOINTS

*(2) 20MM BEADS OF CONTINUOUS SAFIRE INTUMESCENT MASTIC

CONTINUOUS BUTYL SEALANT
10. x 0.75" PPH DP3 @ 8" O/C

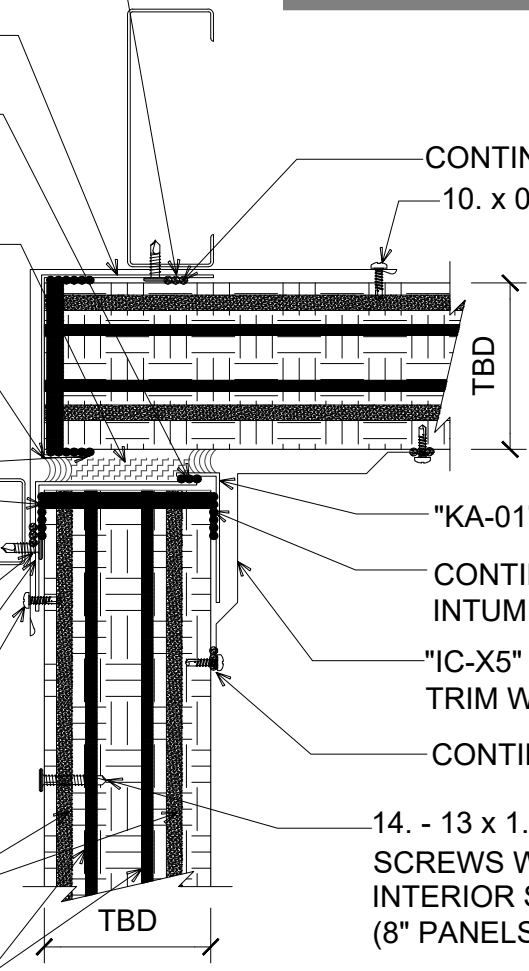
"KA-01" 16 GA FRONT CAP CHANNEL

CONTINUOUS SAFIRE INTUMESCENT MASTIC

"IC-X5" PROFILED INSIDE CORNER TRIM W/ 10. x 0.75" PPH DP3 @ 8" O/C

CONTINUOUS BUTYL SEALANT

14. - 13 x 1.5" PNC DP1 JOINT STITCH SCREWS W/ 5/8" BONDED WASHER INTERIOR SIDE OF PANEL @ 36" O/C (8" PANELS ONLY)



#J INSIDE CORNER PROFILED TRIM @ PANEL JOINT (REQUIRED FOR 8" PANEL)
(PLAN VIEW)

DETAIL: CORNER TRANSITION - PROFILED INSIDE	SHEET: 1 OF 1
	DATE: 04/25/24 DRAWN BY: MMF
APPLICATION: HORIZONTAL FIRE WALL, COMMERCIAL & INDUSTRIAL AWIP DETAIL NUMBER: MHW-ACH-CT-013_J	
929 ALDRIDGE ROAD VACAVILLE, CA 95688 TEL: (707) 359-2280 FAX: (707) 359-2286 WWW.AWIPANELS.COM	

"KA-__" 16 GA "J" CHANNEL W/ ¼ - 14 x 1"
PNC DP3 W/O WASHER @ 24" O/C

"OC-X2" OUTSIDE CORNER TRIM

CONTINUOUS SAFIRE
INTUMESCENT MASTIC

MIN. 4PCF COMPRESSED MINERAL
FIBER (NOT BY IMP SUPPLIER)

HILTI CFS-S SIL GG FIRESTOP
SILICONE SEALANT MINIMUM
5/8" DEPTH (NOT BY IMP SUPPLIER)

CONTINUOUS SAFIRE
INTUMESCENT MASTIC

CONTINUOUS BUTYL
SEALANT

"KA-01" 16 GA REAR CAP CHANNEL
W/ ¼ - 14 x 1" PNC DP3 W/O
WASHER @ 24" O/C

10. x 0.75" PPH DP3 @ 8" O/C

() ¼ - 14 x _ HWH DP3 W/ 1 ⅛" BONDED
WASHER PER PANEL (SEE FASTENING
PATTERNS DETAILS)

CONTINUOUS BUTYL SEALANT
10. x 0.75" PPH DP3 @ 8" O/C

TBD

CONTINUOUS BUTYL SEALANT

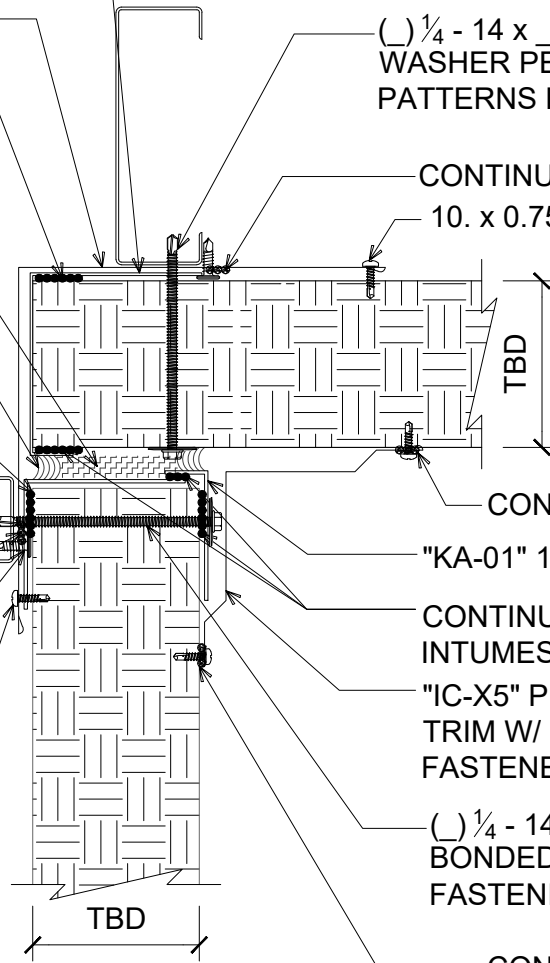
"KA-01" 16 GA FRONT CAP CHANNEL

CONTINUOUS SAFIRE
INTUMESCENT MASTIC

"IC-X5" PROFILED INSIDE CORNER
TRIM W/ 10. x 0.75" PPH DP3
FASTENERS @ 8" O/C

() ¼ - 14 x _ HWH DP3 W/ 1 ⅛"
BONDED WASHER PER PANEL (SEE
FASTENING PATTERNS DETAILS)

CONTINUOUS BUTYL SEALANT



#M INSIDE CORNER PROFILED TRIM @ MID PANEL (REQUIRED FOR 8" PANEL)

(PLAN VIEW)

DETAIL:

CORNER TRANSITION - PROFILED INSIDE

APPLICATION:

HORIZONTAL FIRE WALL, COMMERCIAL & INDUSTRIAL

AWIP DETAIL NUMBER:

MHW-ACHT-013_M

929 ALDRIDGE ROAD
VACAVILLE, CA 95688
TEL: (707) 359-2280
FAX: (707) 359-2286
WWW.AWIPANELS.COM

All Weather
Insulated Panels

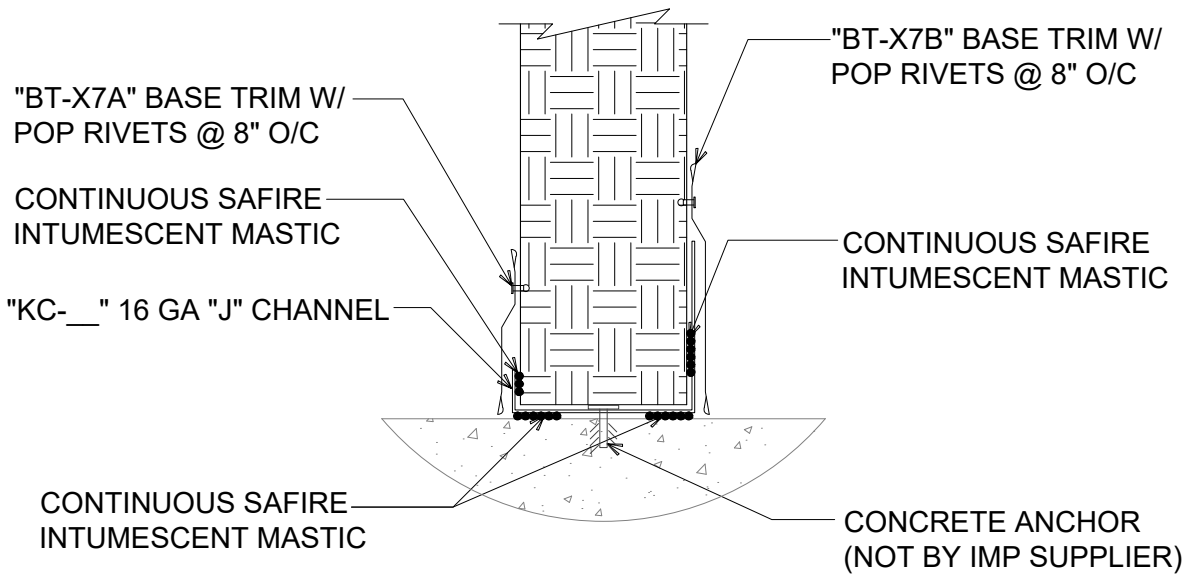


SHEET:

1

DATE: 04/25/24
DRAWN BY: MMF

OF 1



BASE DETAIL - PARTITION

(SECTION VIEW)

DETAIL:

BASE CONDITION

APPLICATION:

HORIZONTAL FIRE WALL, INTERIOR AMBIENT

AWIP DETAIL NUMBER:

MHW-AAI-BC-010

929 ALDRIDGE ROAD
VACAVILLE, CA 95688
TEL: (707) 359-2280
FAX: (707) 359-2286
WWW.AWIPANELS.COM

All Weather
Insulated Panels



SHEET:

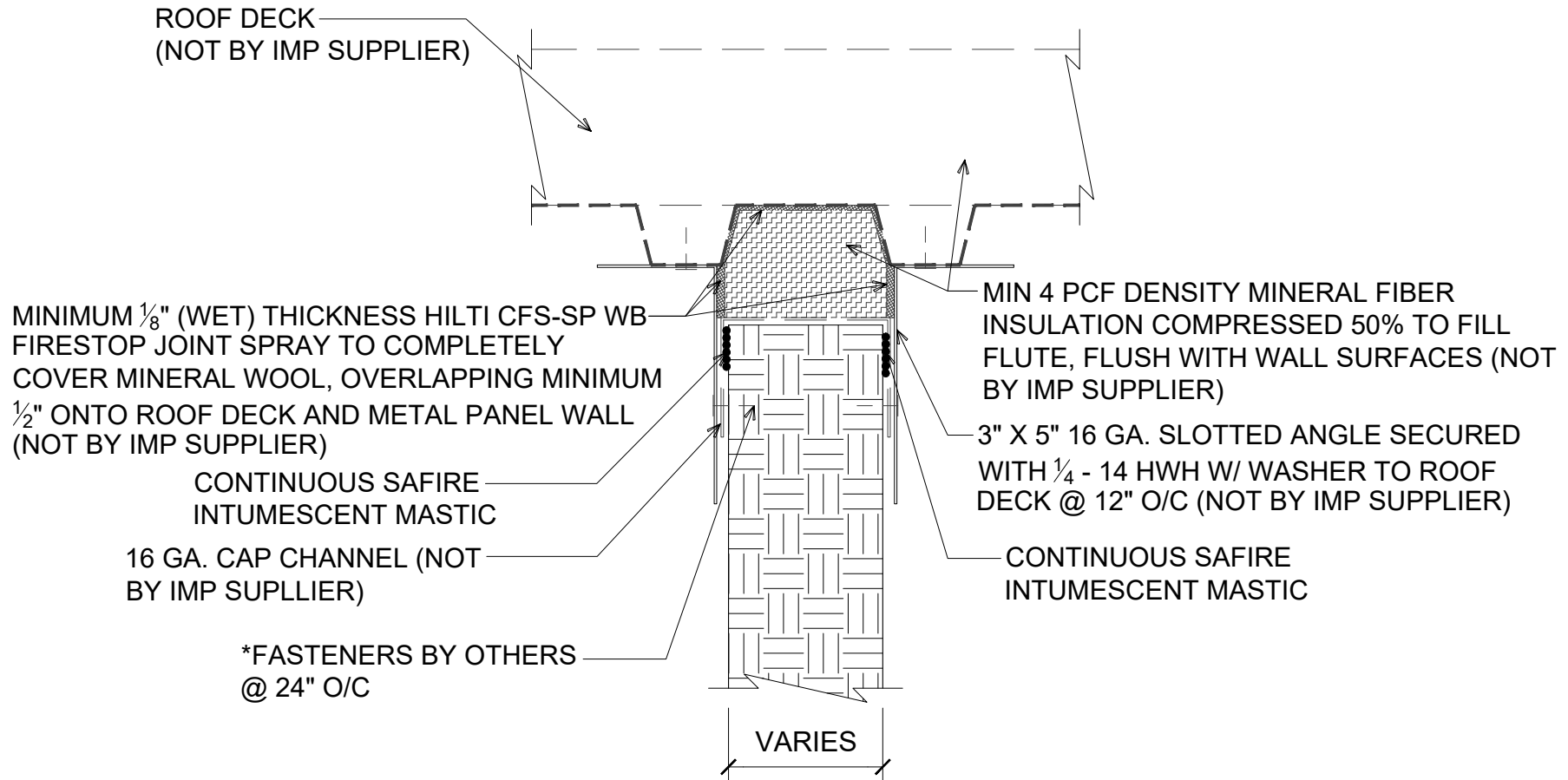
DATE: 04/25/24

DRAWN BY: MMF

1

OF 1

***NOTE: AVOID TIGHTENING FASTENERS AT SLOTS TO ALLOW FOR MOVEMENT.**



FIRE RATED ASSEMBLY PARTITION TO ROOF

(PLAN VIEW)

DETAIL:

PARTITION TO ROOF

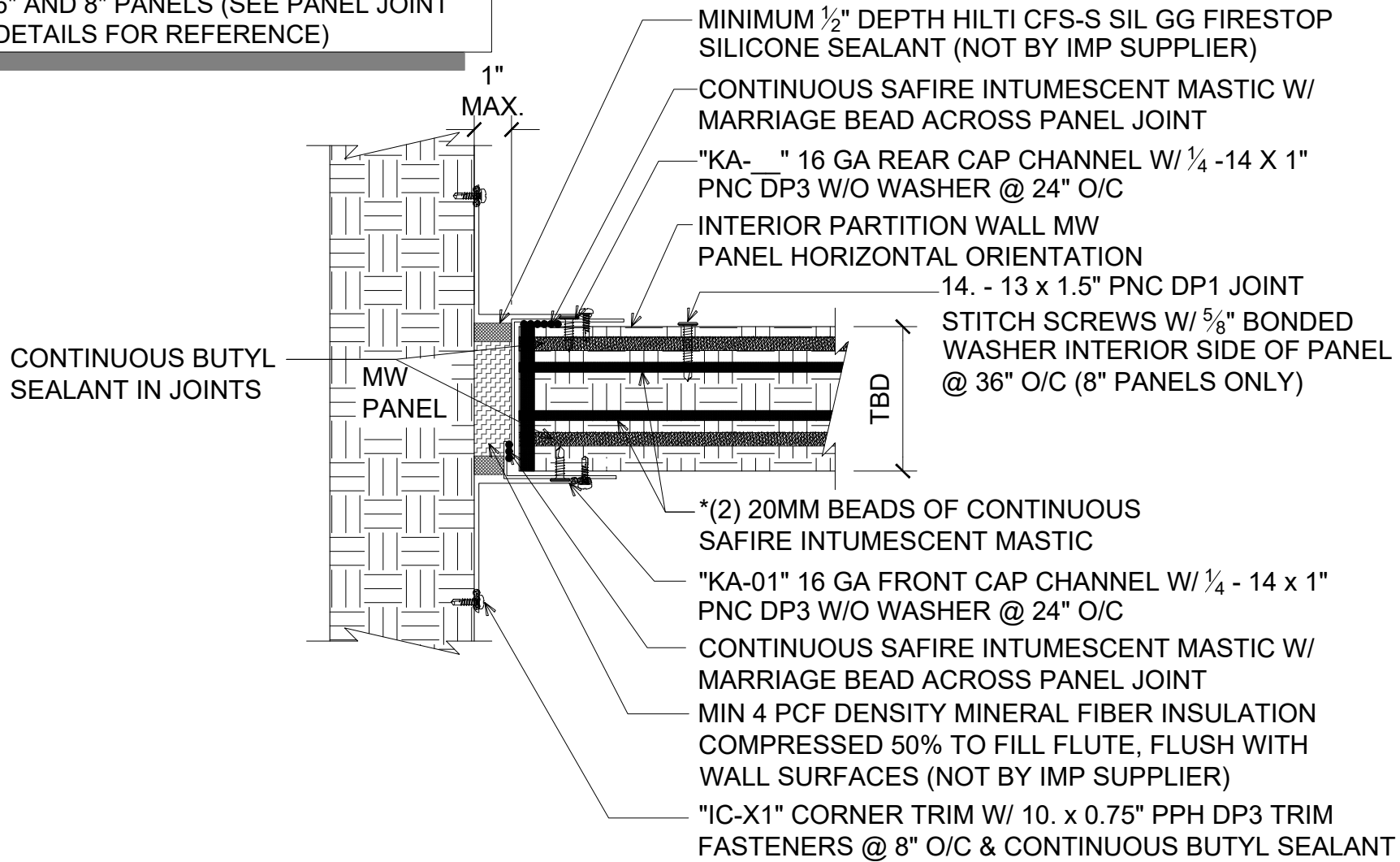
APPLICATION:
HORIZONTAL FIRE WALL, INTERIOR AMBIENT
AWIP DETAIL NUMBER:
MIHW-AA1-PT-010

929 ALDRIDGE ROAD
VACAVILLE, CA 95688
TEL: (707) 359-2280
FAX: (707) 359-2286
WWW.AWIPANELS.COM



SHEET:
DATE: 11/21/23
DRAWN BY: MMF
1 OF 1

***NOTE: 3 BEADS OF SAFIRE INTUMESCENT MASTIC REQUIRED FOR 6" AND 8" PANELS (SEE PANEL JOINT DETAILS FOR REFERENCE)**



INTERIOR PARTITION ENDWALL DETAIL

(PLAN VIEW)

DETAIL: CORNER TRANSITION

APPLICATION:
HORIZONTAL FIRE WALL, INTERIOR AMBIENT
AWIP DETAIL NUMBER:
MIHW-AA1-CT-010

929 ALDRIDGE ROAD
VACAVILLE, CA 95688
TEL: (707) 359-2280
FAX: (707) 359-2286
WWW.AWIPANELS.COM

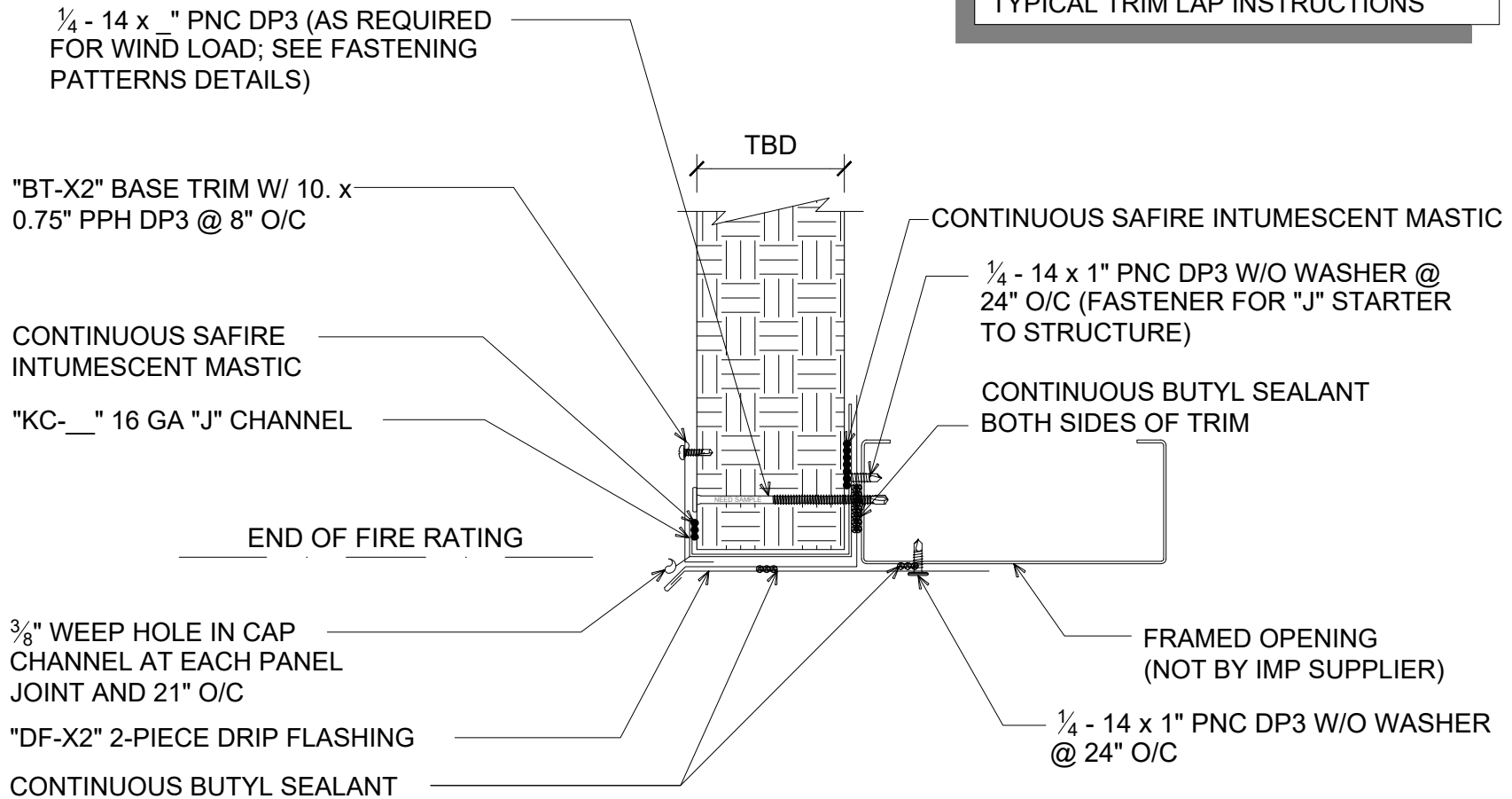
All Weather
Insulated Panels



SHEET:
DATE: 11/21/23
DRAWN BY: MMF

1 OF 1

NOTE: SEE TRIM END LAP DETAILS FOR TYPICAL TRIM LAP INSTRUCTIONS



NOTE: FIRE RATED OPENINGS ARE DEPENDENT ON THE FIRE-RATED COMPONENT SUPPLIER (WINDOW/DOOR/ETC., NOT BY IMP SUPPLIER). PLEASE CONTACT AWIP TECHNICAL SERVICES OR THE FIRE-RATED COMPONENT SUPPLIER FOR ADDITIONAL INFORMATION

FRAMED OPENING HEAD W/ FLAT TRIM AND DRIP EDGE (4" AND 6" PANELS ONLY)

(SECTION VIEW)

DETAIL:

FRAMED OPENING - FLAT HEADER

APPLICATION:

HORIZONTAL FIRE WALL, COMMERCIAL & INDUSTRIAL

AWIP DETAIL NUMBER:

MHW-ACH-FC-010

SHEET:

DATE: 04/25/24

DRAWN BY: MMF

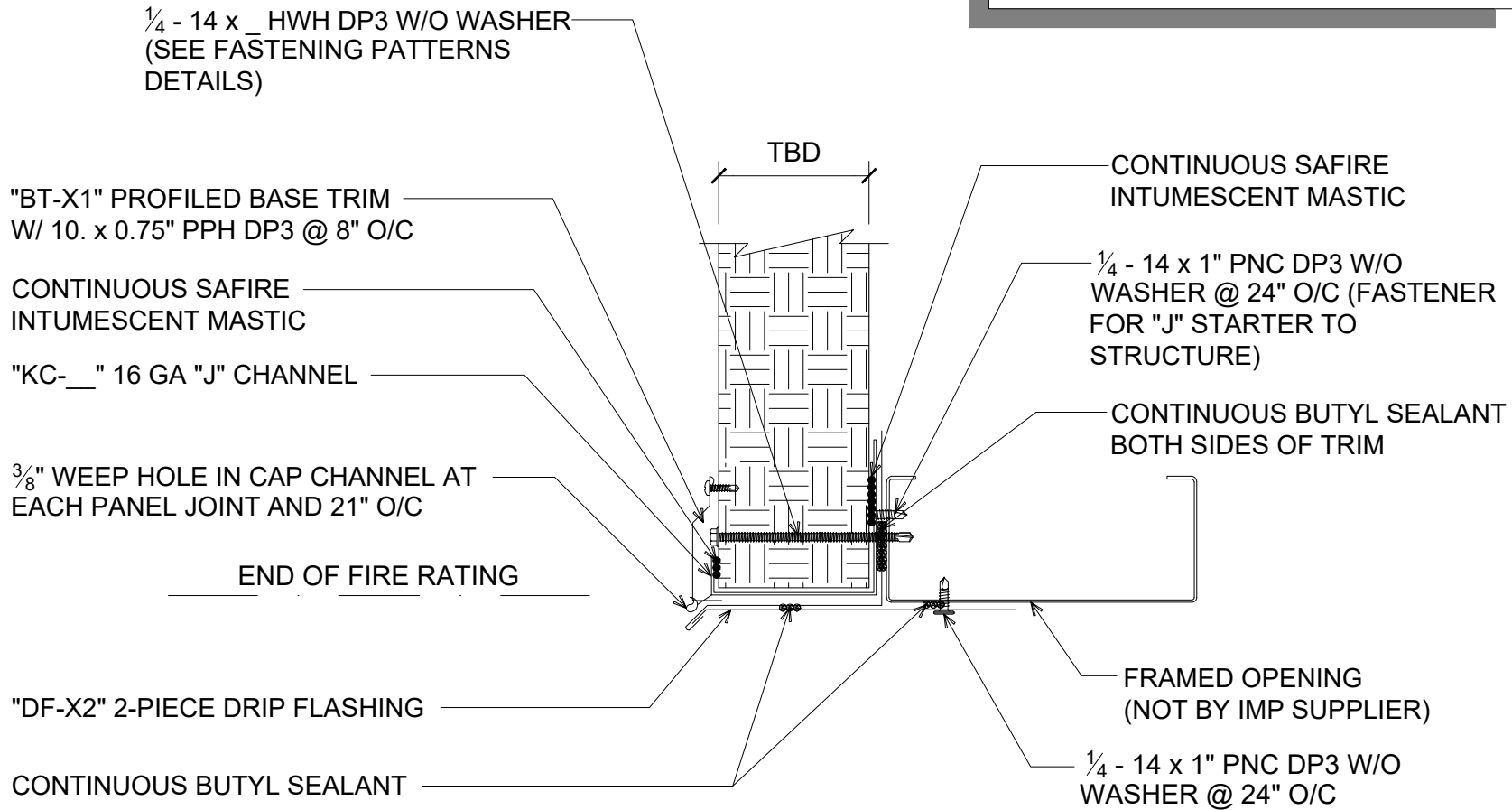
1

OF 1

929 ALDRIDGE ROAD
VACAVILLE, CA 95688
TEL: (707) 359-2280
FAX: (707) 359-2286
WWW.AWIPANELS.COM



NOTE: SEE TRIM END LAP DETAILS FOR TYPICAL TRIM LAP INSTRUCTIONS



NOTE: FIRE RATED OPENINGS ARE DEPENDENT ON THE FIRE-RATED COMPONENT SUPPLIER (WINDOW/DOOR/ETC., NOT BY IMP SUPPLIER). PLEASE CONTACT AWIP TECHNICAL SERVICES OR THE FIRE-RATED COMPONENT SUPPLIER FOR ADDITIONAL INFORMATION

F.O. HEAD W/ PROFILED TRIM & DRIP EDGE (REQUIRED FOR 8" PANELS)

(SECTION VIEW)

DETAIL:

FRAMED OPENING - PROFILED HEADER

APPLICATION:

HORIZONTAL FIRE WALL, COMMERCIAL & INDUSTRIAL

AWIP DETAIL NUMBER:

MHW-ACH-FO-011

DATE: 04/25/24

DRAWN BY: MMF

SHEET:

1 OF 1

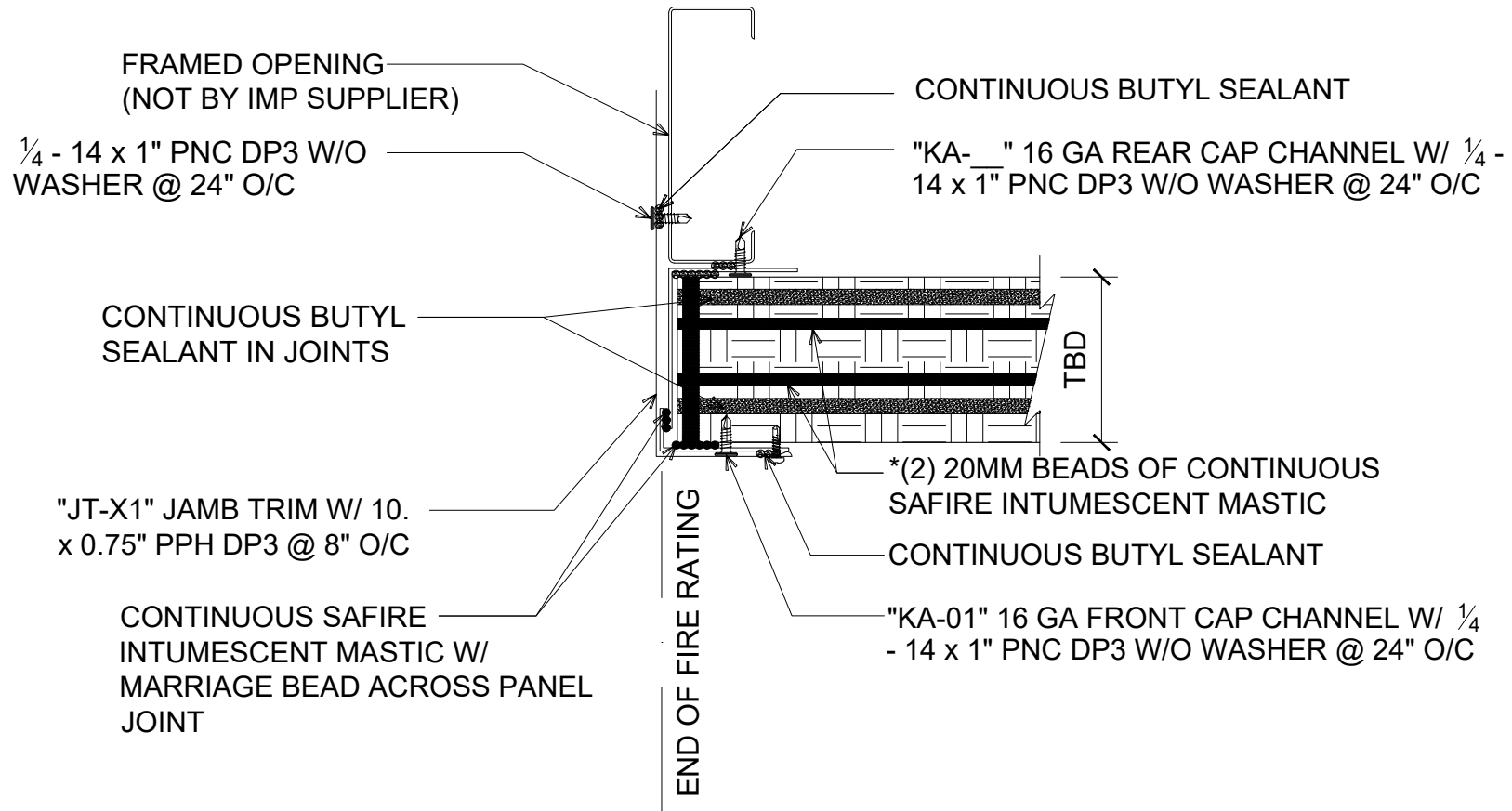
929 ALDRIDGE ROAD
VACAVILLE, CA 95688
TEL: (707) 359-2280
FAX: (707) 359-2286
WWW.AWIPANELS.COM

All Weather
Insulated Panels



NOTE: SEE TRIM END LAP DETAILS FOR TYPICAL TRIM LAP INSTRUCTIONS

*NOTE: 3 BEADS OF SAFIRE INTUMESCENT MASTIC REQUIRED FOR 6" AND 8" PANELS (SEE PANEL JOINT DETAILS FOR REFERENCE)



NOTE: FIRE RATED OPENINGS ARE DEPENDENT ON THE FIRE-RATED COMPONENT SUPPLIER (WINDOW/DOOR/ETC., NOT BY IMP SUPPLIER). PLEASE CONTACT AWIP TECHNICAL SERVICES OR THE FIRE-RATED COMPONENT SUPPLIER FOR ADDITIONAL INFORMATION

#J FRAMED OPENING FLAT JAMB TRIM @ PANEL JOINT (4" AND 6" PANELS ONLY)

(PLAN VIEW)

DETAIL: **FRAMED OPENING - JAMB**

APPLICATION:
HORIZONTAL FIRE WALL, COMMERCIAL & INDUSTRIAL
AWIP DETAIL NUMBER:
MHW-ACI-FO-012_J

929 ALDRIDGE ROAD
VACAVILLE, CA 95688
TEL: (707) 359-2280
FAX: (707) 359-2286
WWW.AWIPANELS.COM



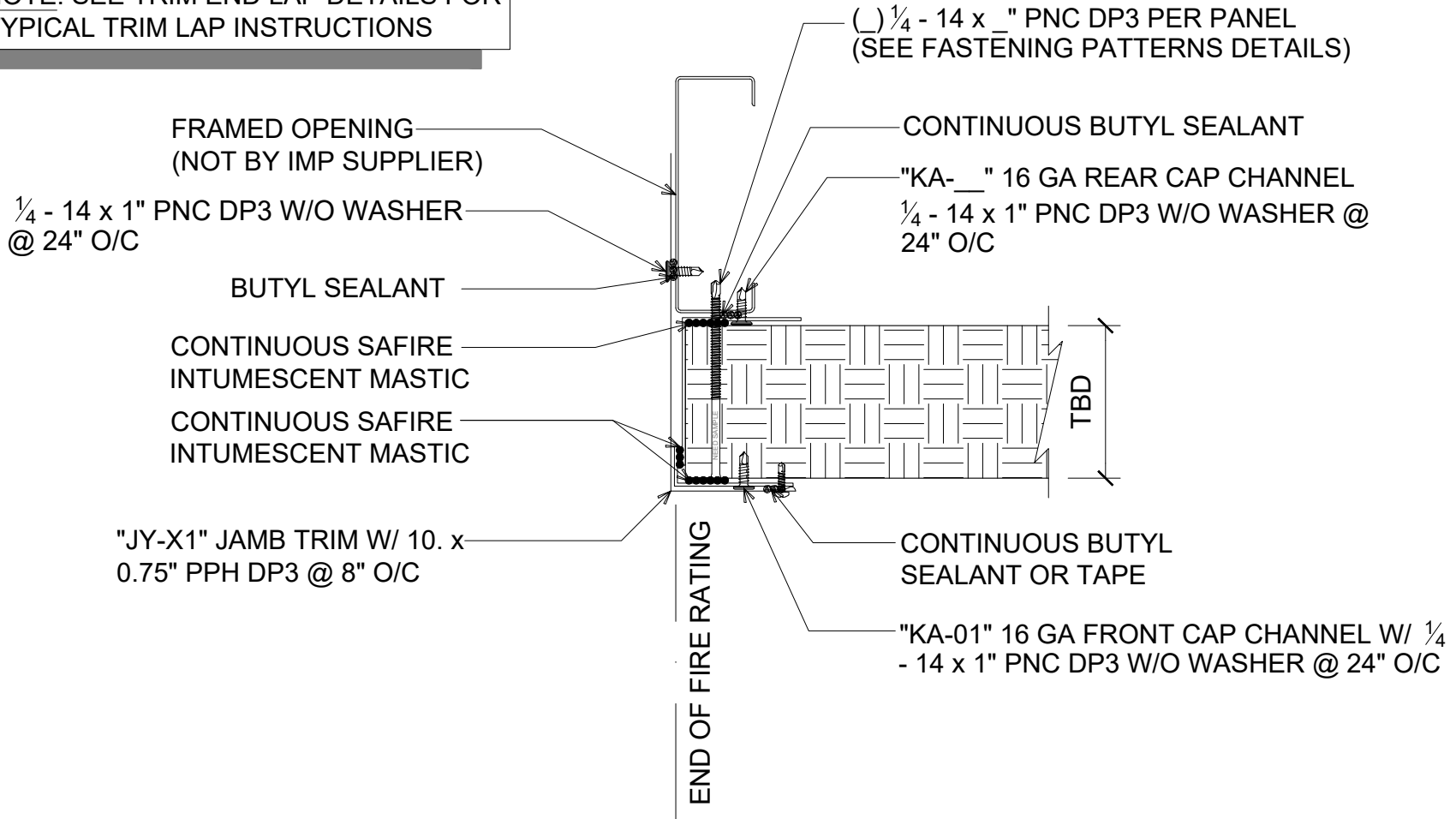
SHEET:

DATE: 11/01/23

DRAWN BY: MMF

1 OF 1

NOTE: SEE TRIM END LAP DETAILS FOR TYPICAL TRIM LAP INSTRUCTIONS



NOTE: FIRE RATED OPENINGS ARE DEPENDENT ON THE FIRE-RATED COMPONENT SUPPLIER (WINDOW/DOOR/ETC., NOT BY IMP SUPPLIER). PLEASE CONTACT AWIP TECHNICAL SERVICES OR THE FIRE-RATED COMPONENT SUPPLIER FOR ADDITIONAL INFORMATION

#M FRAMED OPENING W/ FLAT JAMB TRIM @ MID PANEL (4' AND 6" PANELS ONLY)
(PLAN VIEW)

DETAIL:

FRAMED OPENING - JAMB

APPLICATION:
HORIZONTAL FIRE WALL, COMMERCIAL & INDUSTRIAL
AWIP DETAIL NUMBER:
MHW-ACI-FO-012_MF

929 ALDRIDGE ROAD
VACAVILLE, CA 95688
TEL: (707) 359-2280
FAX: (707) 359-2286
WWW.AWIPANELS.COM



SHEET:

DATE:

11/22/23

DRAWN BY:

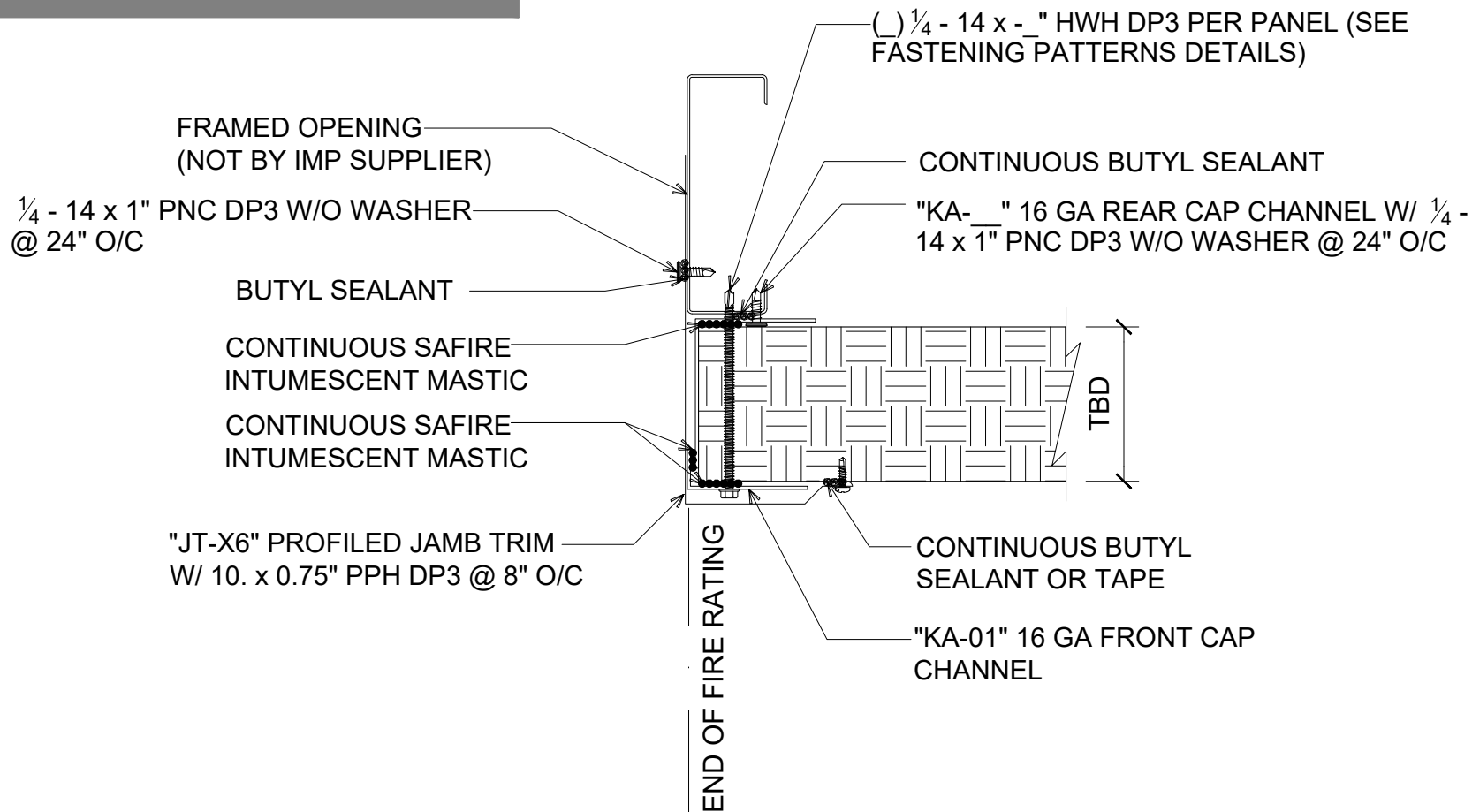
MMF

1

OF

1

NOTE: SEE TRIM END LAP DETAILS FOR TYPICAL TRIM LAP INSTRUCTIONS



NOTE: FIRE RATED OPENINGS ARE DEPENDENT ON THE FIRE-RATED COMPONENT SUPPLIER (WINDOW/DOOR/ETC., NOT BY IMP SUPPLIER). PLEASE CONTACT AWIP TECHNICAL SERVICES OR THE FIRE-RATED COMPONENT SUPPLIER FOR ADDITIONAL INFORMATION

#M F. O. W/ PROFILED JAMB TRIM @ MID PANEL (REQUIRED FOR 8" PANELS)
(PLAN VIEW)

DETAIL:

FRAMED OPENING - JAMB

APPLICATION:
HORIZONTAL FIRE WALL, COMMERCIAL & INDUSTRIAL
AWIP DETAIL NUMBER:
MHW-ACI-FO-012_MP

929 ALDRIDGE ROAD
VACAVILLE, CA 95688
TEL: (707) 359-2280
FAX: (707) 359-2286
WWW.AWIPANELS.COM

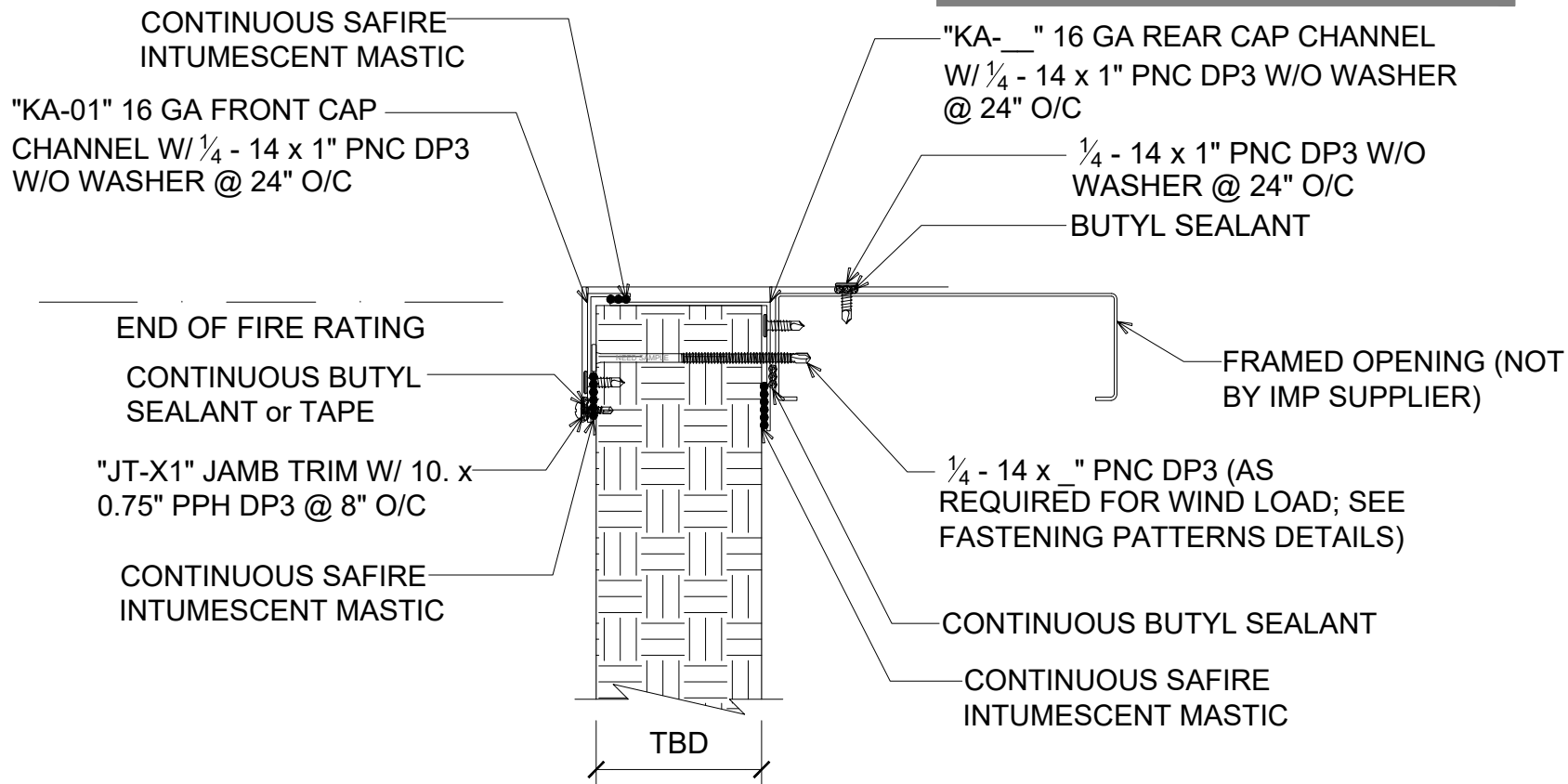
All Weather
Insulated Panels



DATE: 11/22/23
DRAWN BY: MMF

SHEET: 1 OF 1

NOTE: SEE TRIM END LAP DETAILS FOR TYPICAL TRIM LAP INSTRUCTIONS



NOTE: FIRE RATED OPENINGS ARE DEPENDENT ON THE FIRE-RATED COMPONENT SUPPLIER (WINDOW/DOOR/ETC., NOT BY IMP SUPPLIER). PLEASE CONTACT AWIP TECHNICAL SERVICES OR THE FIRE-RATED COMPONENT SUPPLIER FOR ADDITIONAL INFORMATION

FRAMED OPENING SILL FLAT TRIM (4" & 6" PANELS ONLY)

(SECTION VIEW)

DETAIL: FRAMED OPENING - FLAT SILL

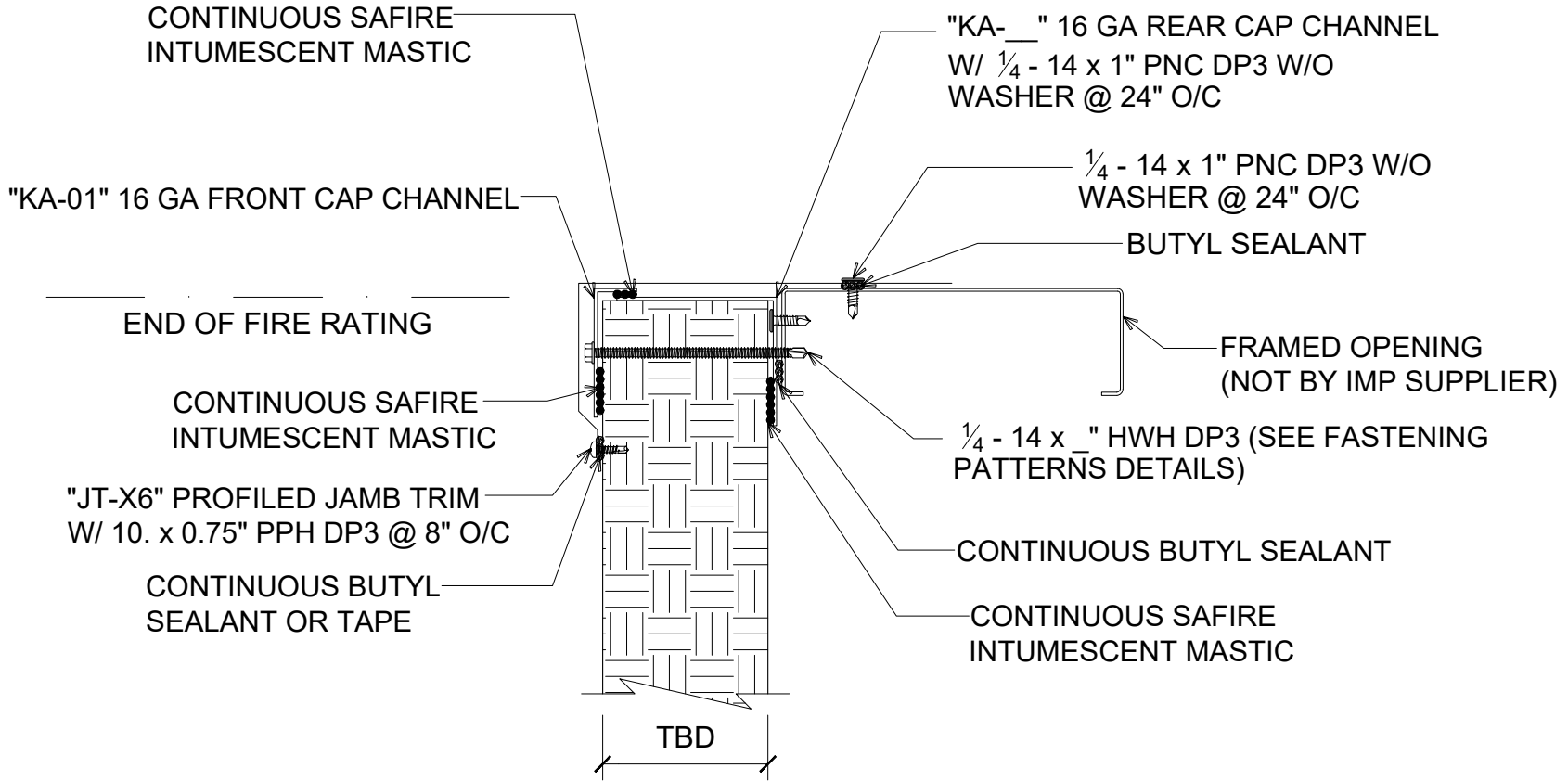
APPLICATION:
HORIZONTAL FIRE WALL, COMMERCIAL & INDUSTRIAL
AWIP DETAIL NUMBER:
MHW-ACI-FO-013

929 ALDRIDGE ROAD
VACAVILLE, CA 95688
TEL: (707) 359-2280
FAX: (707) 359-2286
WWW.AWIPANELS.COM



SHEET:
DATE: 11/22/23
DRAWN BY: MMF
1 OF 1

NOTE: SEE TRIM END LAP DETAILS FOR
TYPICAL TRIM LAP INSTRUCTIONS



NOTE: FIRE RATED OPENINGS ARE DEPENDENT ON THE FIRE-RATED COMPONENT SUPPLIER (WINDOW/DOOR/ETC., NOT BY IMP SUPPLIER). PLEASE CONTACT AWIP TECHNICAL SERVICES OR THE FIRE-RATED COMPONENT SUPPLIER FOR ADDITIONAL INFORMATION

FRAMED OPENING SILL PROFILED TRIM (REQUIRED FOR 8" PANELS) (SECTION VIEW)

DETAIL: FRAMED OPENING - PROFILE SILL

APPLICATION:
HORIZONTAL FIRE WALL, COMMERCIAL & INDUSTRIAL
AWIP DETAIL NUMBER:
MHW-ACI-FO-014

929 ALDRIDGE ROAD
VACAVILLE, CA 95688
TEL: (707) 359-2280
FAX: (707) 359-2286
WWW.AWIPANELS.COM



SHEET:
DATE: 11/22/23
DRAWN BY: MMF
1 OF 1

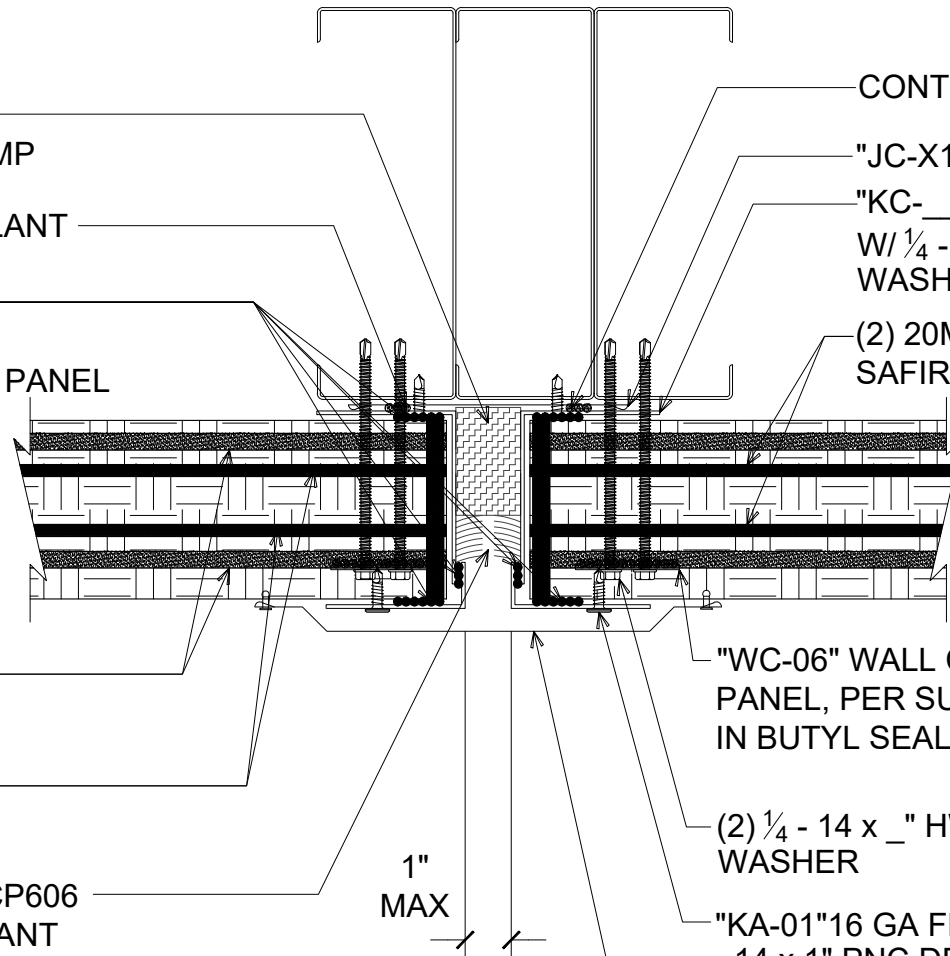
MIN.4 PCF COMPRESSED
MINERAL FIBER (NOT BY IMP
SUPPLIER)
CONTINUOUS BUTYL SEALANT

CONTINUOUS SAFIRE
INTUMESCENT MASTIC W/
MARRIAGE BEAD ACROSS PANEL

CONTINUOUS BUTYL
SEALANT IN BOTH JOINTS

(2) BEADS OF SAFIRE
INTUMESCENT MASTIC

MINIMUM 1" DEPTH HILTI CP606
FLEXIBLE FIRESTOP SEALANT
(NOT BY IMP SUPPLIER)



CONTINUOUS BUTYL SEALANT

"JC-X1" MENDING PLATE

"KC-__" 16 GA REAR CAP CHANNEL
W/ 1/4 - 14 x 1" PNC DP3 W/O
WASHER @ 24" O/C

(2) 20MM BEADS OF CONTINUOUS
SAFIRE INTUMESCENT MASTIC

"WC-06" WALL CLIP (1 PER
PANEL, PER SUPPORT) SET CLIP
IN BUTYL SEALANT

(2) 1/4 - 14 x _" HWH DP3 W/O
WASHER

"KA-01" 16 GA FRONT CAP CHANNEL W/ 1/4
- 14 x 1" PNC DP3 W/O WASHER @ 24" O/C

"WT-X1" COVER TRIM W/ POP RIVETS
@ 8" O/C

1"
MAX

HORIZONTAL END JOINT (4" PANEL)

(PLAN VIEW)

DETAIL:

END JOINT

APPLICATION:
HORIZONTAL FIRE WALL, COMMERCIAL & INDUSTRIAL
AWIP DETAIL NUMBER:
MHW-ACI-PT-013

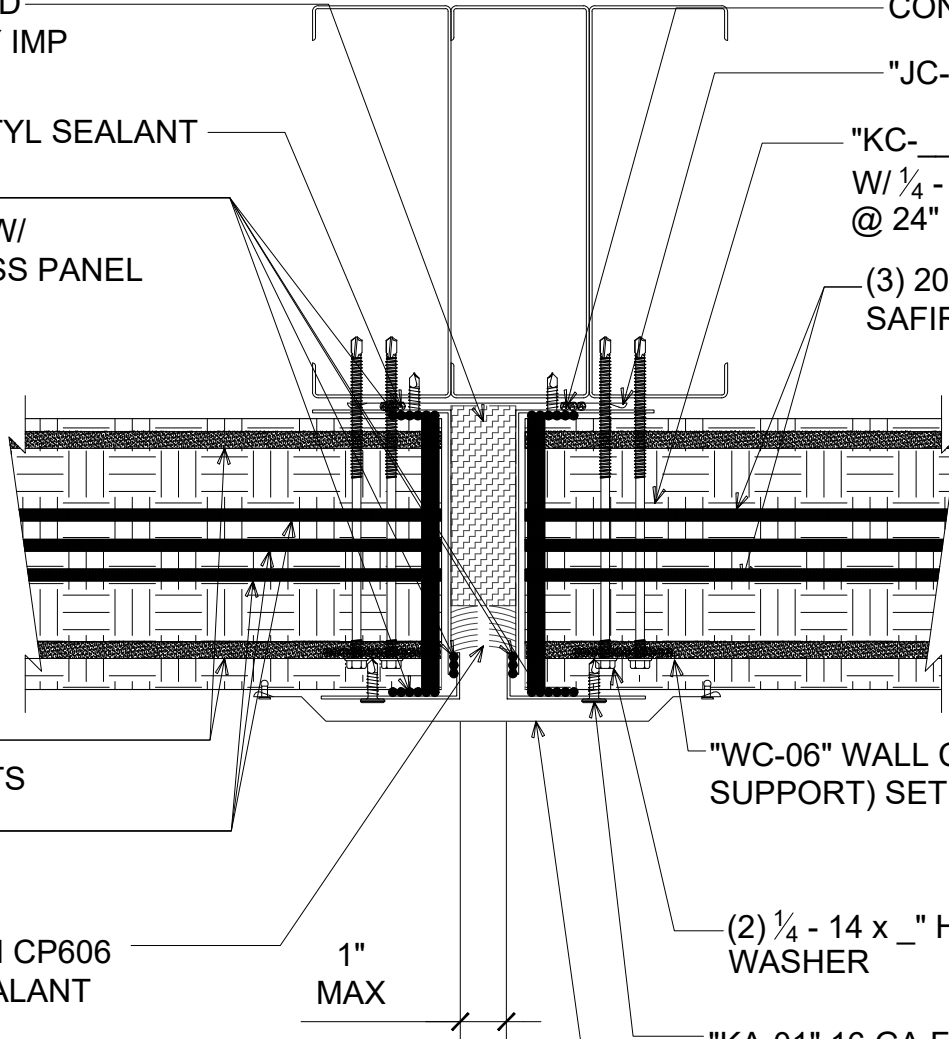
929 ALDRIDGE ROAD
VACAVILLE, CA 95688
TEL: (707) 359-2280
FAX: (707) 359-2286
WWW.AWIPANELS.COM



MIN. 4 PCF COMPRESSED
MINERAL FIBER (NOT BY IMP
SUPPLIER)

CONTINUOUS BUTYL SEALANT

CONTINUOUS SAFIRE
INTUMESCENT MASTIC W/
MARRIAGE BEAD ACROSS PANEL



CONTINUOUS BUTYL SEALANT

"JC-X1" MENDING PLATE

"KC-__" 16 GA REAR CAP CHANNEL
W/ 1/4 - 14 x 1" PNC DP3 W/O WASHER
@ 24" O/C

(3) 20MM BEADS OF CONTINUOUS
SAFIRE INTUMESCENT MASTIC

CONTINUOUS BUTYL
SEALANT IN BOTH JOINTS

(3) BEADS OF SAFIRE
INTUMESCENT MASTIC

MINIMUM 1" DEPTH HILTI CP606
FLEXIBLE FIRESTOP SEALANT
(NOT BY KINGSPAN)

1"
MAX

"WC-06" WALL CLIP (1 PER PANEL, PER
SUPPORT) SET CLIP IN BUTYL SEALANT

(2) 1/4 - 14 x -" HWH DP3 W/O
WASHER

"KA-01" 16 GA FRONT CAP CHANNEL W/ 1/4
- 14 x 1" PNC DP3 W/O WASHER @ 24" O/C

"WT-X1" COVER TRIM W/ POP RIVETS
@ 8" O/C

#

HORIZONTAL END JOINT (6" & 8" PANEL)

(PLAN VIEW)

DETAIL:

END JOINT

APPLICATION:
HORIZONTAL FIRE WALL, COMMERCIAL & INDUSTRIAL
AWIP DETAIL NUMBER:
MHW-ACI-PT-014

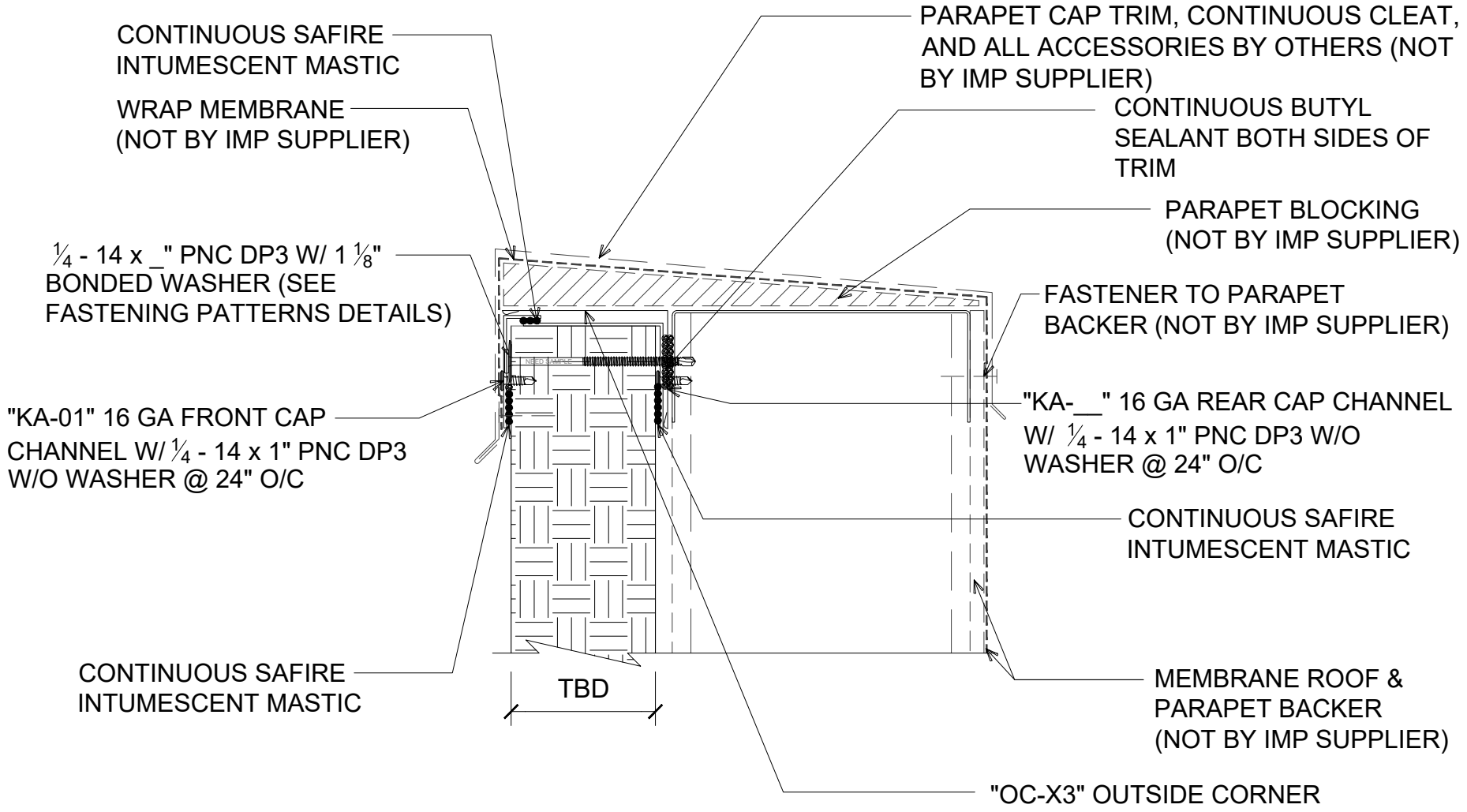
929 ALDRIDGE ROAD
VACAVILLE, CA 95688
TEL: (707) 359-2280
FAX: (707) 359-2286
WWW.AWIPANELS.COM

All Weather
Insulated Panels



SHEET:
DATE: 11/22/23
DRAWN BY: MMF

1 OF 1

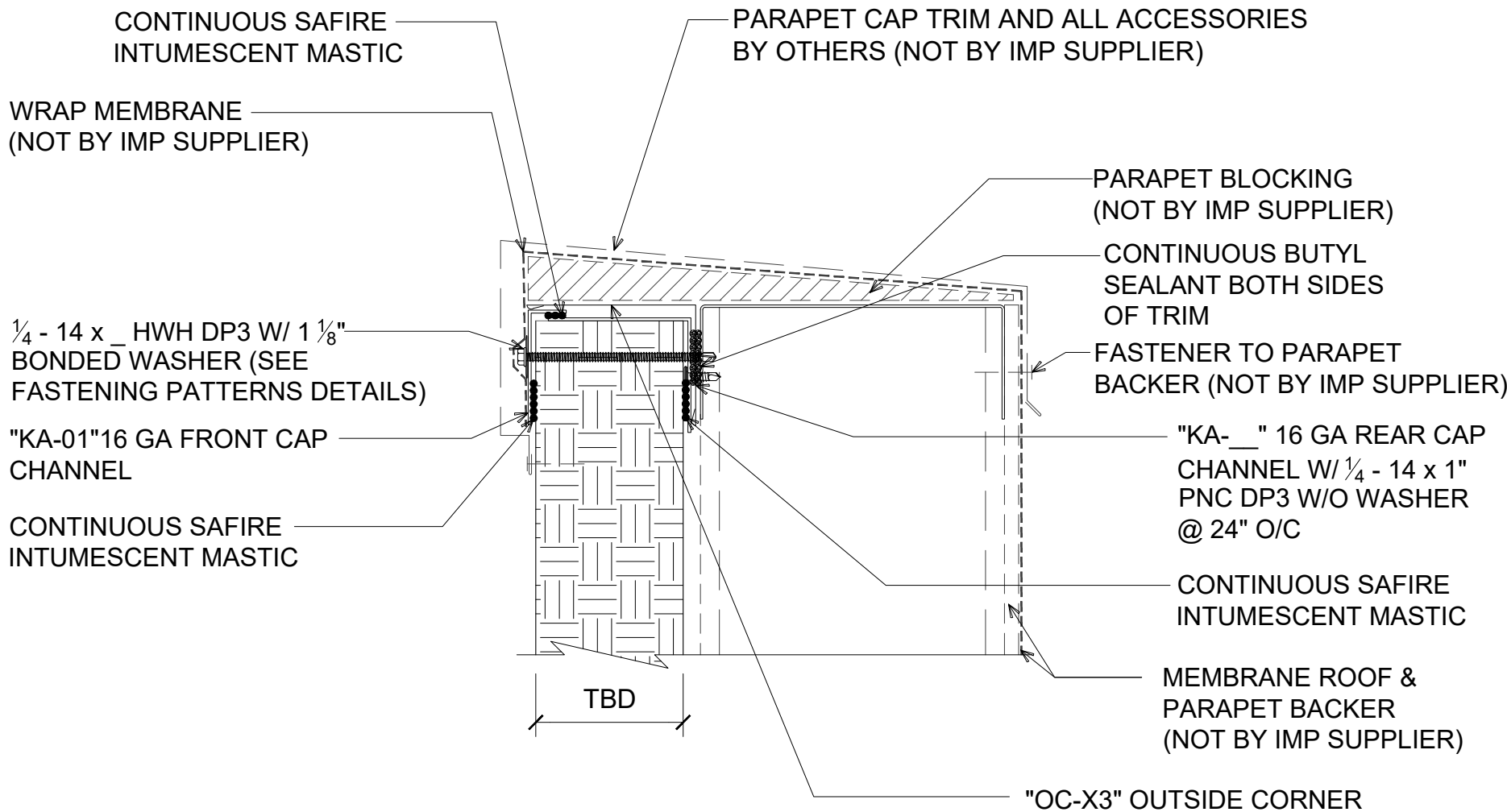


PARAPET WITH FLUSH TRIM
 (4" AND 6" PANELS ONLY)
 (SECTION VIEW)

DETAIL:	PARAPET WALL - FLAT	
APPLICATION:	HORIZONTAL FIRE WALL, COMMERCIAL & INDUSTRIAL	
AWIP DETAIL NUMBER:	MHW-ACH-PW-010	
SHEET:	1	of 1
DATE:	12/21/23	
DRAWN BY:	MMF	

929 ALDRIDGE ROAD
 VACAVILLE, CA 95688
 TEL: (707) 359-2280
 FAX: (707) 359-2286
 WWW.AWIPANELS.COM



PARAPET WITH PROFILED TRIM
 (REQUIRED FOR 8" PANEL)
 (SECTION VIEW)

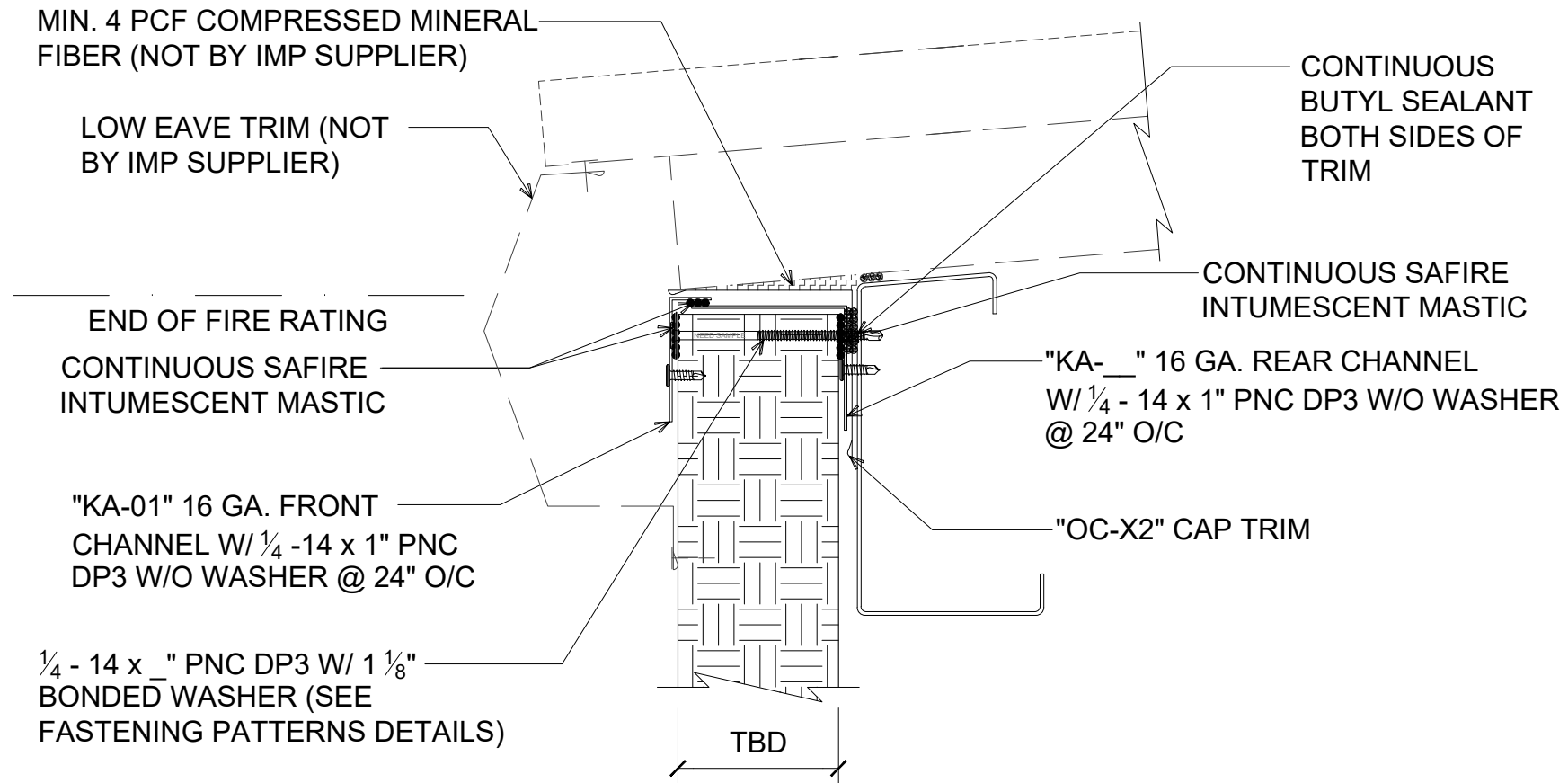
DETAIL: PARAPET WALL - PROFILED		SHEET: 1 of 1
APPLICATION: HORIZONTAL FIRE WALL, COMMERCIAL & INDUSTRIAL	DATE: 12/21/23	DRAWN BY: MMF
AWIP DETAIL NUMBER: MHW-ACHPW-011		

929 ALDRIDGE ROAD
 VACAVILLE, CA 95688
 TEL: (707) 359-2280
 FAX: (707) 359-2286
 WWW.AWIPANELS.COM



NOTE: HEX HEAD THROUGH FASTENERS ARE REQUIRED FOR STRUCTURAL CONNECTION OF PANELS WITH 8" THICKNESS.

NOTE: REFER TO ROOF DETAILS FOR ROOF INSTALLATION



WALL TO ROOF LOW EAVE

DETAIL: WALL TO ROOF - EAVE

APPLICATION:
HORIZONTAL FIRE WALL, COMMERCIAL & INDUSTRIAL
AWIP DETAIL NUMBER:
MHW-ACI-PT-010

929 ALDRIDGE ROAD
VACAVILLE, CA 95688
TEL: (707) 359-2280
FAX: (707) 359-2286
WWW.AWIPANELS.COM

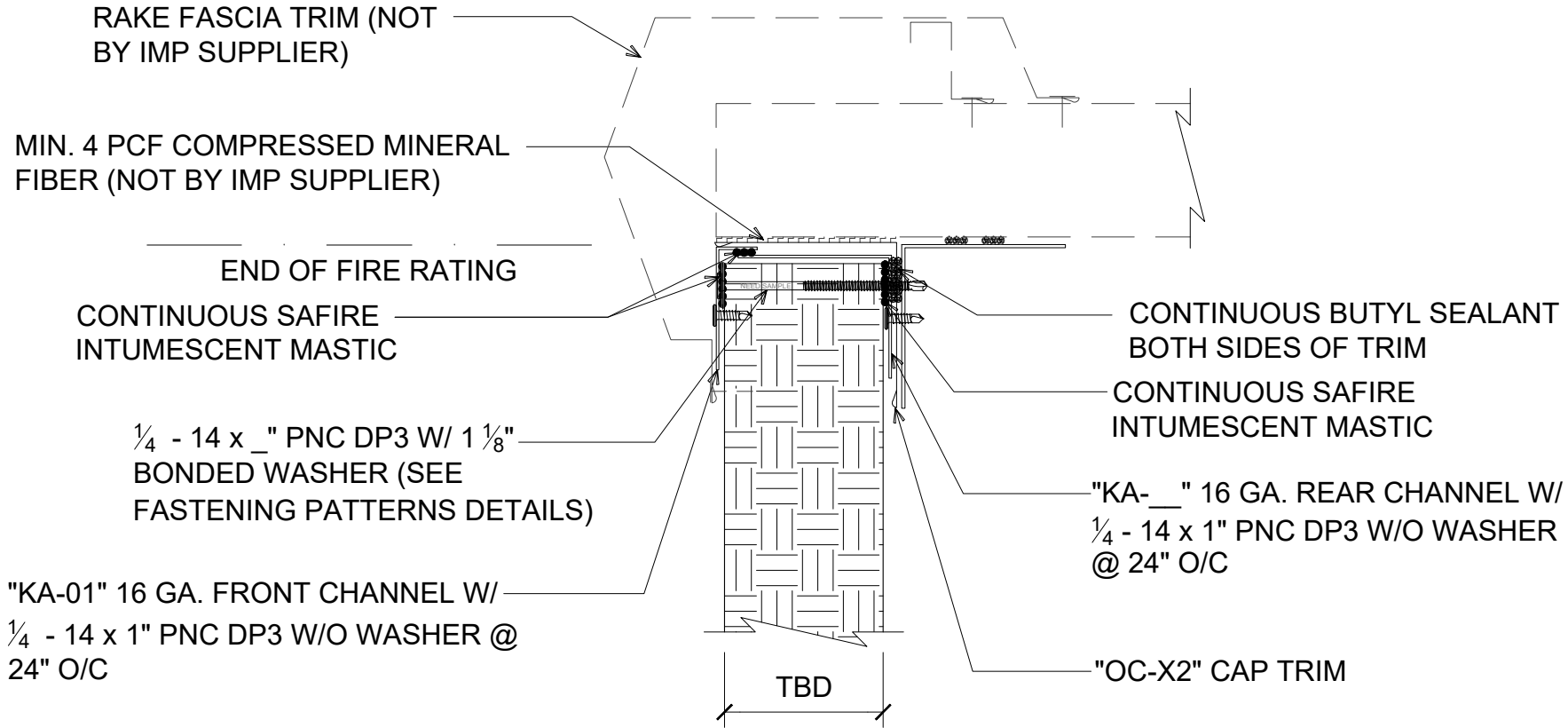
All Weather
Insulated Panels



SHEET:
DATE: 11/20/23
DRAWN BY: MMF
1 OF 1

NOTE: HEX HEAD THROUGH FASTENERS ARE REQUIRED FOR STRUCTURAL CONNECTION OF PANELS WITH 8" THICKNESS.

NOTE: REFER TO ROOF DETAILS FOR ROOF INSTALLATION



WALL TO ROOF RAKE

DETAIL:

WALL TO ROOF - RAKE

APPLICATION:
HORIZONTAL FIRE WALL, COMMERCIAL & INDUSTRIAL
AWIP DETAIL NUMBER:
MHW-ACI-PT-011

929 ALDRIDGE ROAD
VACAVILLE, CA 95688
TEL: (707) 359-2280
FAX: (707) 359-2286
WWW.AWIPANELS.COM

All Weather
Insulated Panels

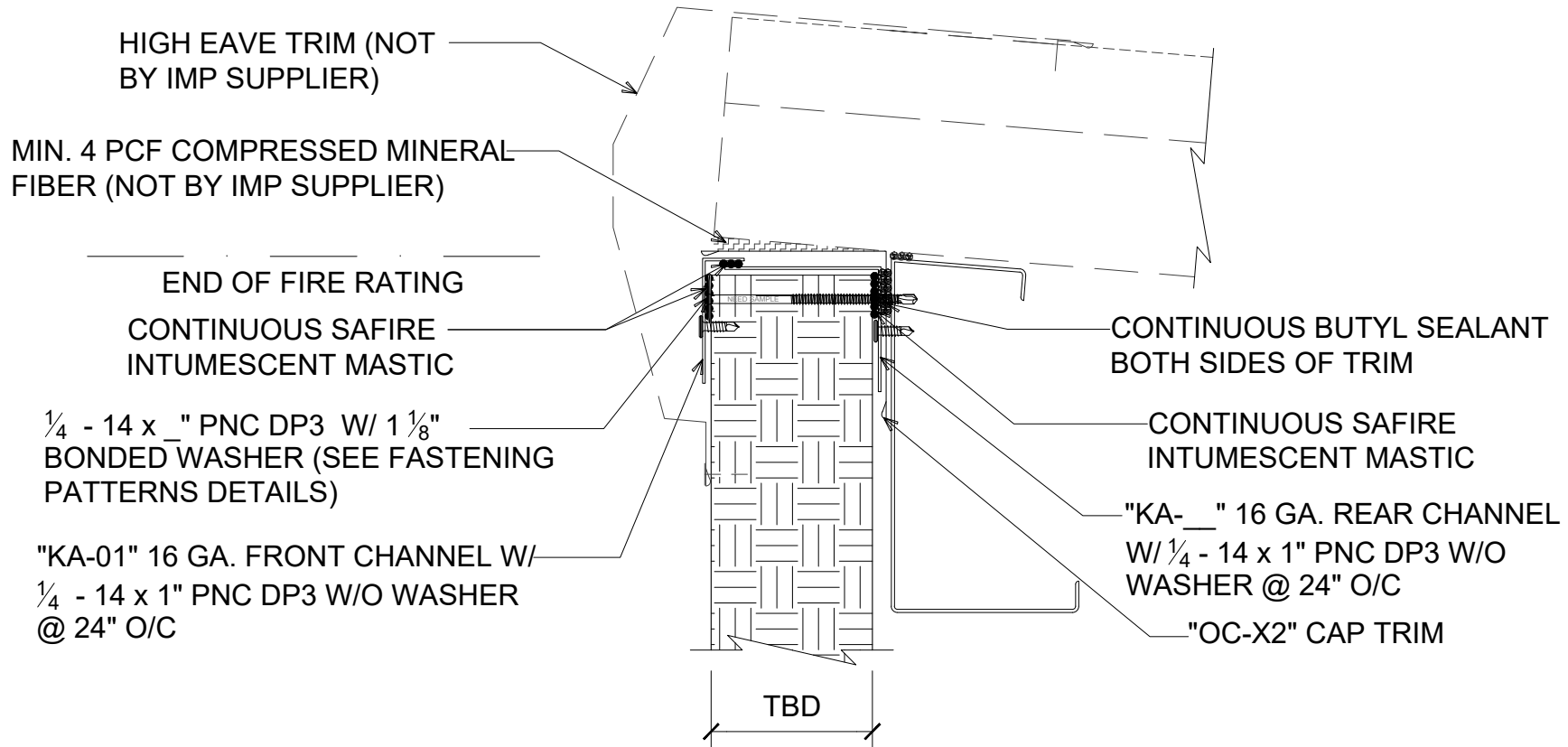


SHEET:
DATE: 11/20/23
DRAWN BY: MMF

1 OF 1

NOTE: HEX HEAD THROUGH FASTENERS ARE REQUIRED FOR STRUCTURAL CONNECTION OF PANELS WITH 8" THICKNESS.

NOTE: REFER TO ROOF DETAILS FOR ROOF INSTALLATION

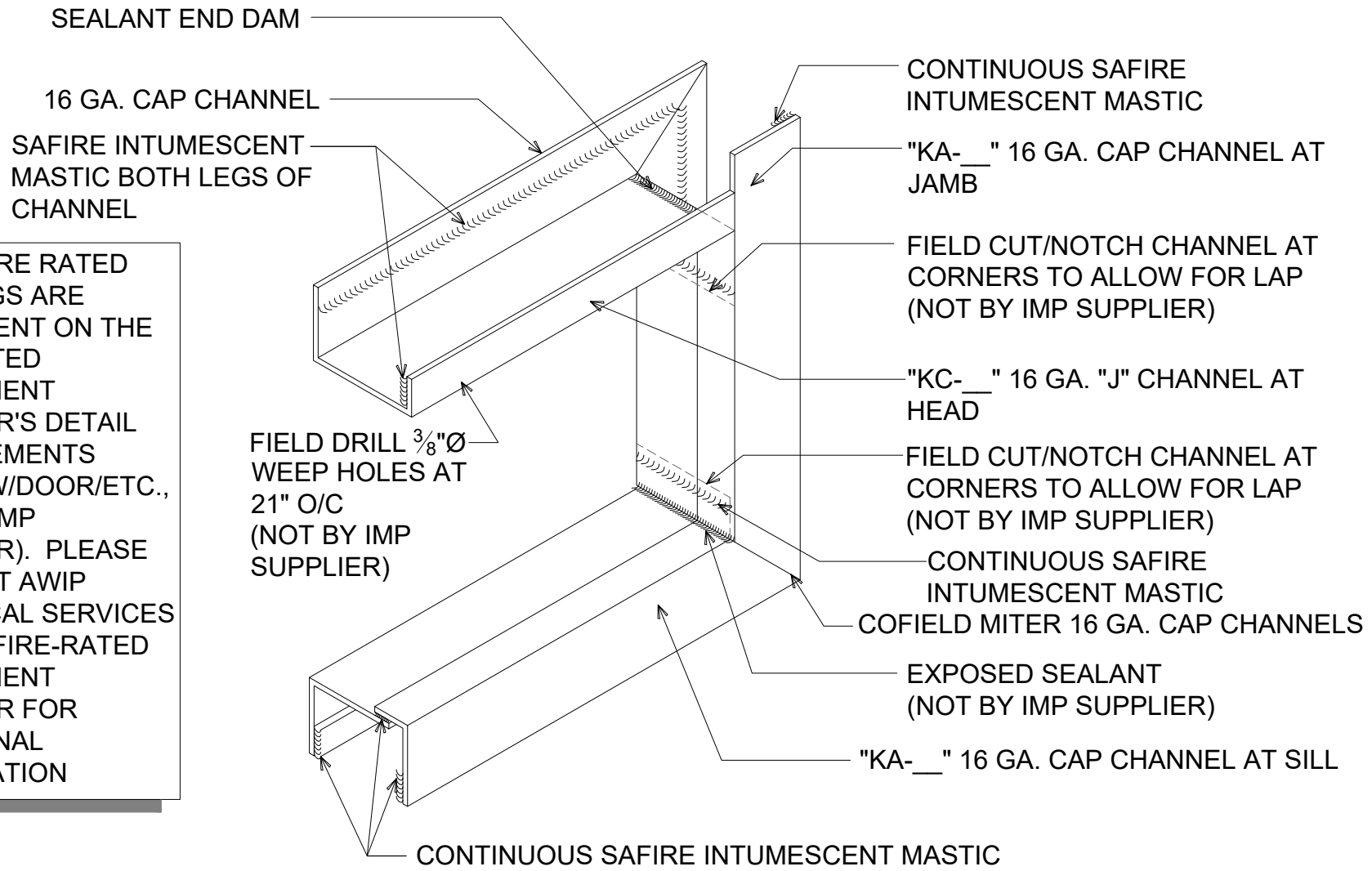


WALL TO ROOF HIGH EAVE

DETAIL: **WALL TO ROOF - HIGH EAVE**
 APPLICATION: HORIZONTAL FIRE WALL, COMMERCIAL & INDUSTRIAL
 DATE: 11/20/23
 DRAWN BY: MMF
 SHEET: 1 OF 1

929 ALDRIDGE ROAD
 VACAVILLE, CA 95688
 TEL: (707) 359-2280
 FAX: (707) 359-2286
 WWW.AWIPANELS.COM





NOTE: FIRE RATED OPENINGS ARE DEPENDENT ON THE FIRE-RATED COMPONENT SUPPLIER'S DETAIL REQUIREMENTS (WINDOW/DOOR/ETC., NOT BY IMP SUPPLIER). PLEASE CONTACT AWIP TECHNICAL SERVICES OR THE FIRE-RATED COMPONENT SUPPLIER FOR ADDITIONAL INFORMATION

16 GA. CAP CHANNEL AT FRAMED OPENING

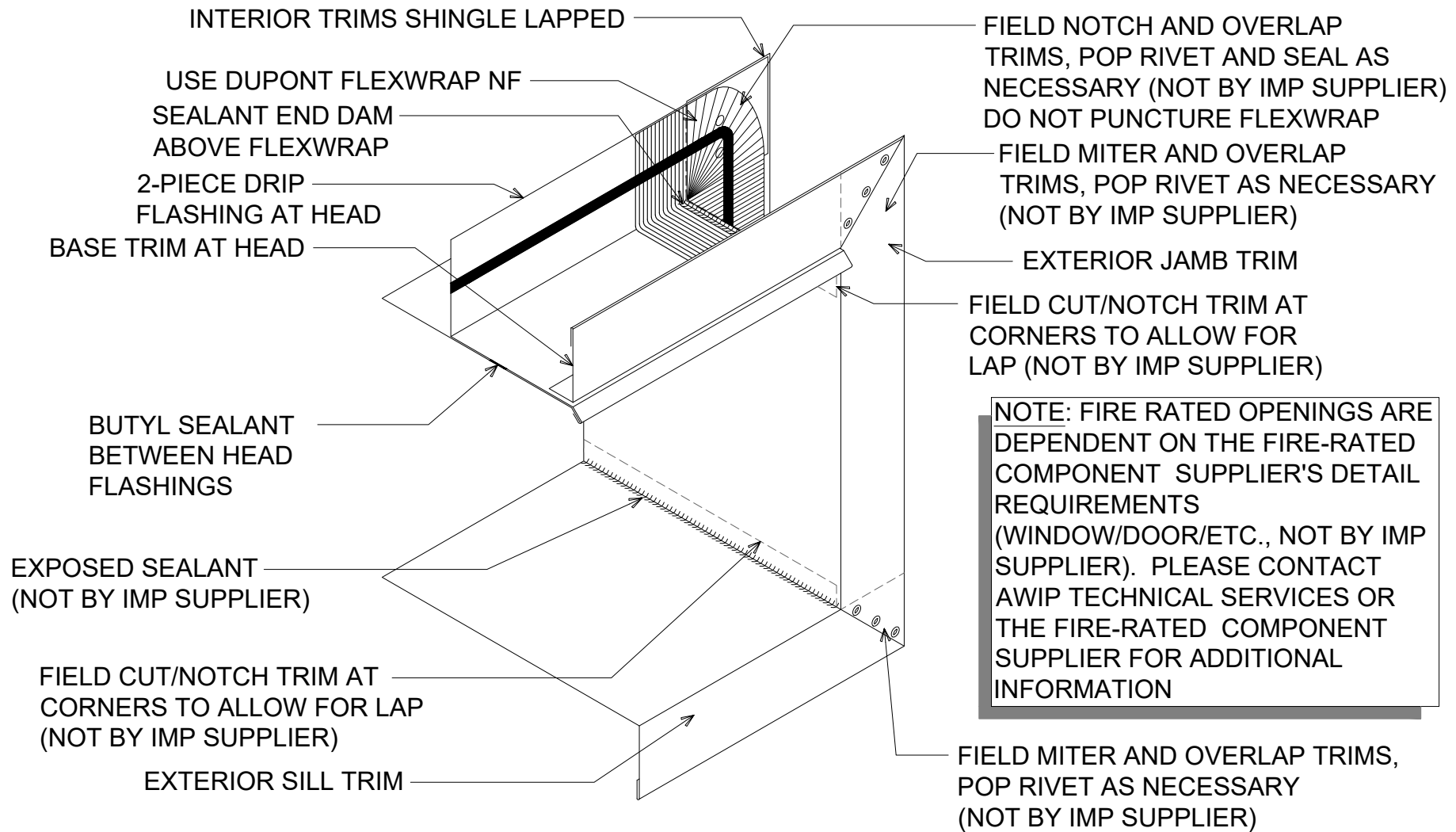
(ISOMETRIC VIEW)

DETAIL: SPECIAL ASSEMBLY - CAP CHANNELS

DATE:	06/02/23	SHEET:	1	OF	1
DRAWN BY:	MMF				
APPLICATION: HORIZONTAL FIRE WALL, COMMERCIAL & INDUSTRIAL					
AWIP DETAIL NUMBER: MHW-ACI-SA-010					

929 ALDRIDGE ROAD
 VACAVILLE, CA 95688
 TEL: (707) 359-2280
 FAX: (707) 359-2286
 WWW.AWIPANELS.COM






NOTE: FIRE RATED OPENINGS ARE DEPENDENT ON THE FIRE-RATED COMPONENT SUPPLIER'S DETAIL REQUIREMENTS (WINDOW/DOOR/ETC., NOT BY IMP SUPPLIER). PLEASE CONTACT AWIP TECHNICAL SERVICES OR THE FIRE-RATED COMPONENT SUPPLIER FOR ADDITIONAL INFORMATION

TRIM AT FRAMED OPENING

(ISOMETRIC VIEW)

DETAIL:	TRIM APPLICATION - FRAMED OPENING		
	DATE:	06/02/23	SHEET: 1 OF 1
APPLICATION:	HORIZONTAL FIRE WALL, COMMERCIAL & INDUSTRIAL		
AWIP DETAIL NUMBER:	MHW-ACI-TA-010		
929 ALDRIDGE ROAD VACAVILLE, CA 95688 TEL: (707) 359-2280 FAX: (707) 359-2286 WWW.AWIPANELS.COM	 All Weather Insulated Panels		

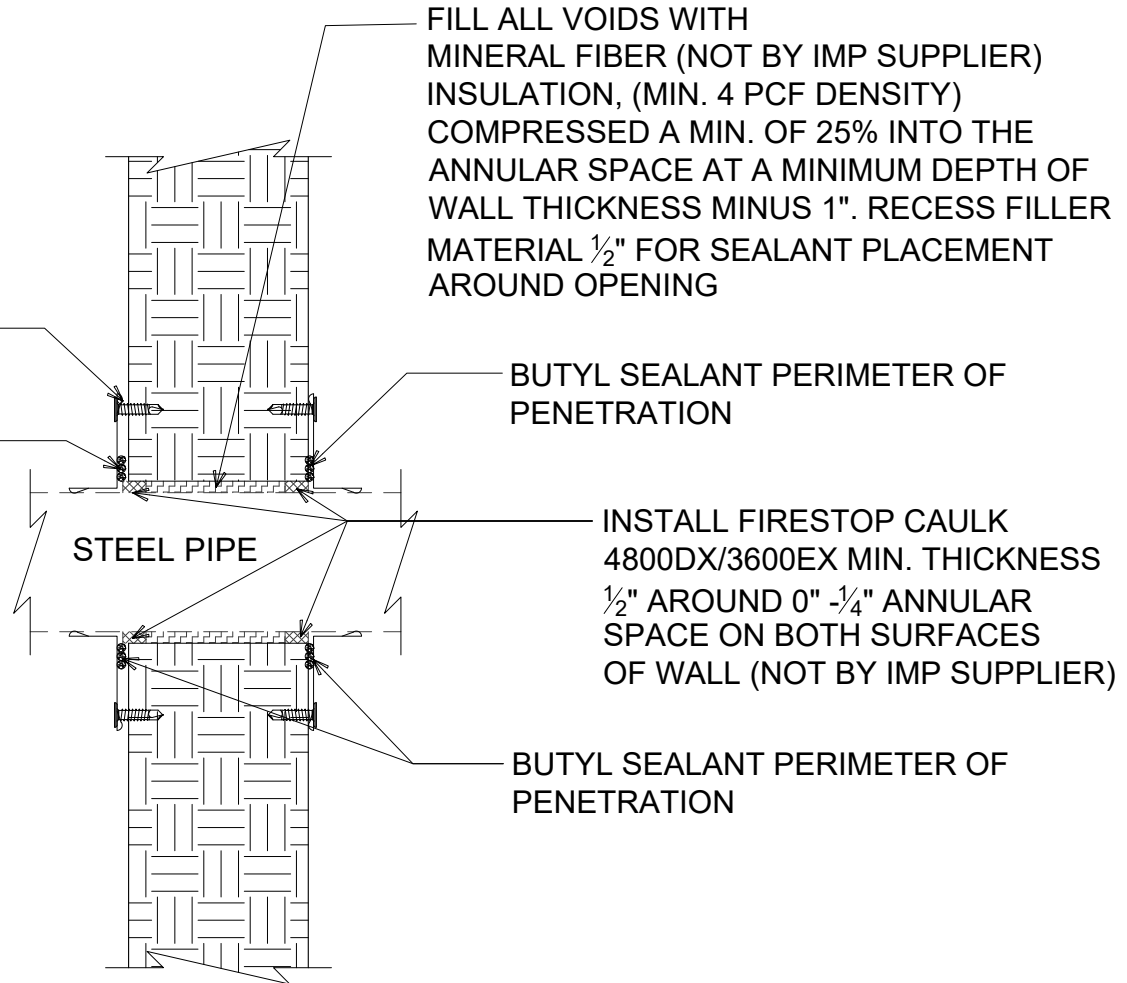
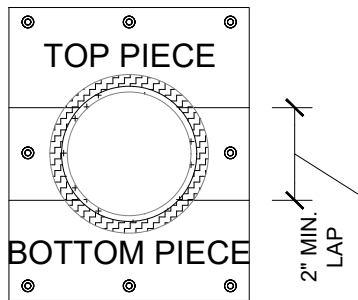
NOTE: AVOID LOCATING PENETRATIONS AT JOINT LOCATIONS

NOTE: PROJECT FIRE CONSULTANT TO REVIEW AND APPROVE.

FIELD BENT TRIM W/ SEALANT & #12 HEX-HEAD COLOR MATCH FASTENER

BUTYL SEALANT PERIMETER OF PENETRATION

CUT TRIMS ON SITE TO FIT



WALL PENETRATION

(SECTION VIEW)

DETAIL:

PANEL PENETRATION

APPLICATION:
HORIZONTAL FIRE WALL, COMMERCIAL & INDUSTRIAL
AWIP DETAIL NUMBER:
MHW-ACI-PP-010

929 ALDRIDGE ROAD
VACAVILLE, CA 95688
TEL: (707) 359-2280
FAX: (707) 359-2286
WWW.AWIPANELS.COM

All Weather
Insulated Panels



SHEET:

DATE:

06/02/23

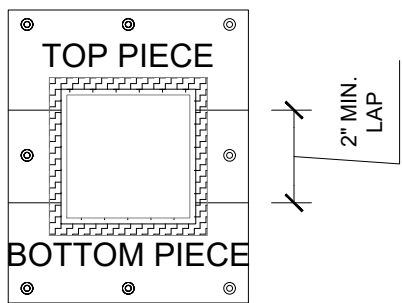
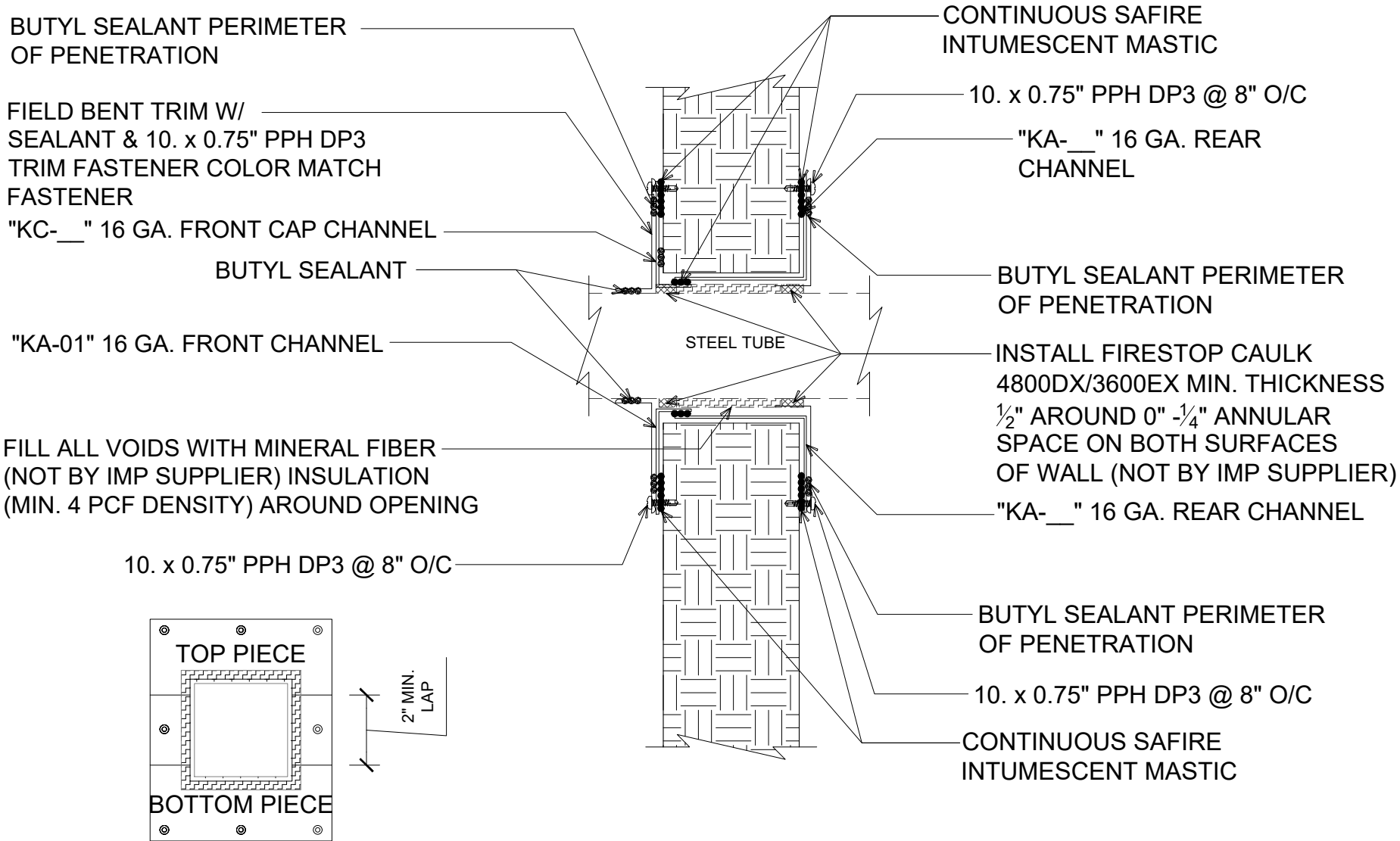
DRAWN BY:

MMF

OF

1

NOTE: AVOID LOCATING PENETRATIONS AT JOINT LOCATIONS



STRUCTURAL MEMBER PENETRATION

(SECTION VIEW)

DETAIL: **PANEL PENETRATION**

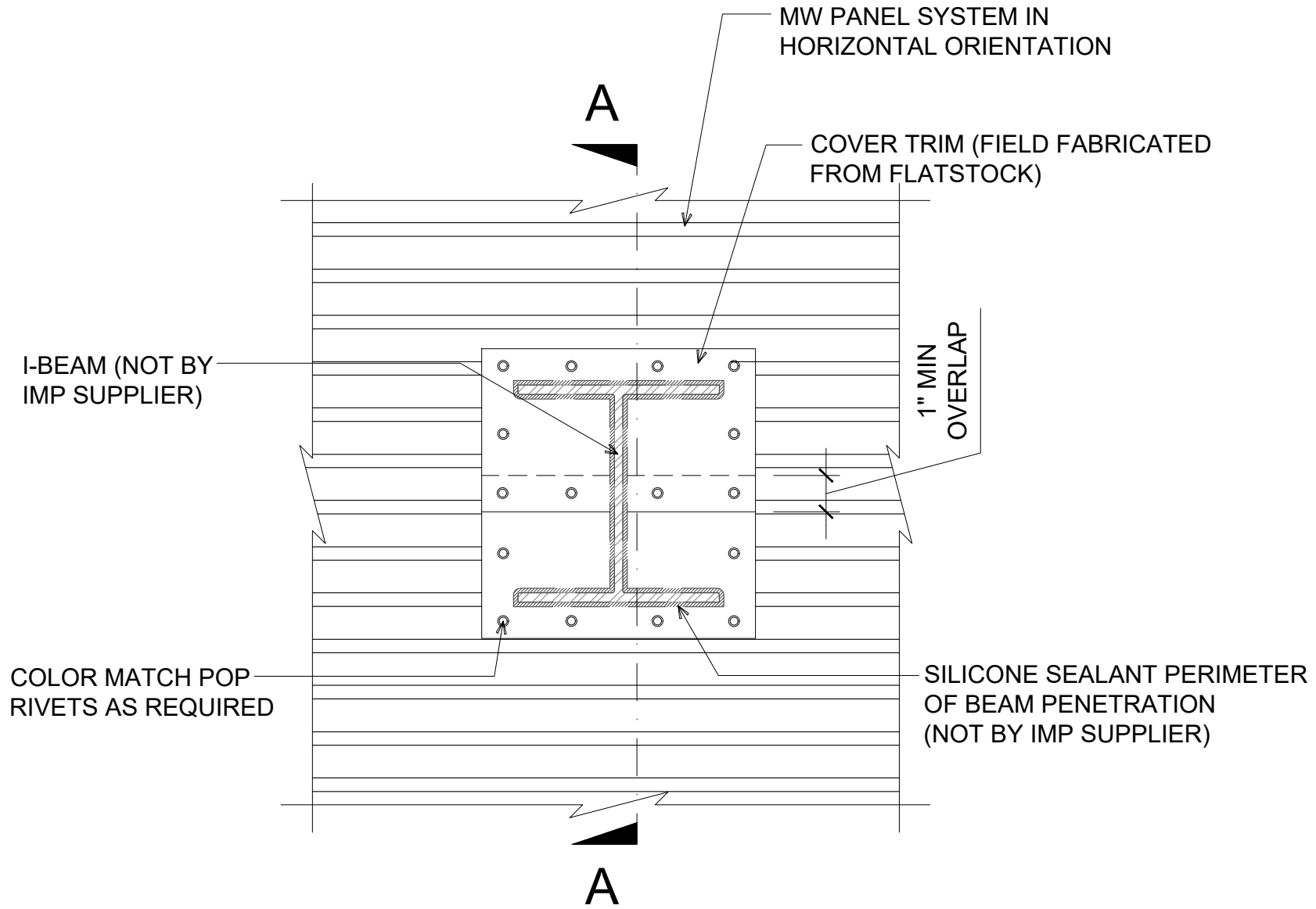
APPLICATION: HORIZONTAL FIRE WALL, COMMERCIAL & INDUSTRIAL

929 ALDRIDGE ROAD
VACAVILLE, CA 95688
TEL: (707) 359-2280
FAX: (707) 359-2286
WWW.AWIPANELS.COM

AWIP
All Weather
Insulated Panels

DATE: 11/06/23
DRAWN BY: MMF

SHEET: 1 OF 1



I-BEAM PENETRATION

(FRONT VIEW)

DETAIL:

PANEL PENETRATION - I-BEAM

APPLICATION:
HORIZONTAL FIRE WALL, COMMERCIAL & INDUSTRIAL
AWIP DETAIL NUMBER:
MIHW-ACI-PP-012

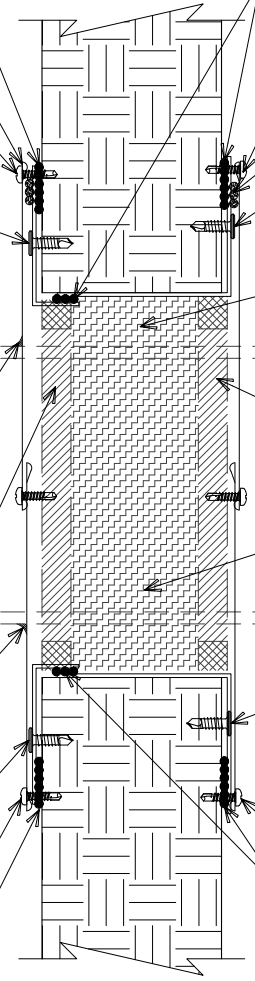
929 ALDRIDGE ROAD
VACAVILLE, CA 95688
TEL: (707) 359-2280
FAX: (707) 359-2286
WWW.AWIPANELS.COM

All Weather
Insulated Panels



NOTE: AVOID LOCATING PENETRATIONS AT JOINT LOCATIONS

CONTINUOUS SAFIRE INTUMESCENT MASTIC
 10. x 0.75" PPH DP3 @ 8" O/C
 BUTYL SEALANT PERIMETER OF TRIM - ENSURE CORRUGATION IN PANEL IS FULLY FILLED
 "KA-01" 16 GA FRONT CAP CHANNEL W/ 1/4 - 14 X 1" PNC DP3 W/O WASHER @ 24" O/C
 SILICONE SEALANT PERIMETER OF BEAM PENETRATION (NOT BY IMP SUPPLIER)
 MINIMUM 5/8" DEPTH HILTI FS-ONE MAX INTUMESCENT FIRESTOP SEALANT PERIMETER OF OPENING I-BEAM (NOT BY IMP SUPPLIER)
 SILICONE SEALANT PERIMETER OF BEAM PENETRATION (NOT BY IMP SUPPLIER)
 "KA-01" 16 GA FRONT CAP CHANNEL W/ 1/4 - 14 X 1" PNC DP3 W/O WASHER @ 24" O/C
 10. x 0.75" PPH DP3 @ 8" O/C
 CONTINUOUS SAFIRE INTUMESCENT MASTIC



CONTINUOUS SAFIRE INTUMESCENT MASTIC
 10. x 0.75" PPH DP3 @ 8" O/C
 CONTINUOUS BUTYL SEALANT
 "KA-__" 16 GA REAR CAP CHANNEL W/ 1/4 - 14 X 1" PNC DP3 W/O WASHER @ 24" O/C
 OPENING TO BE FRAMED OUT WITH SHEET METAL SLEEVE, MIN. 28GA WITH 1" OVERLAP ALONG SEAM
 MINIMUM 5/8" DEPTH HILTI FS-ONE MAX INTUMESCENT FIRESTOP SEALANT PERIMETER OF OPENING
 MINERAL WOOL, MIN. 4 PCF DENSITY, TIGHTLY PACKED AND RECESSED TO ACCOMMODATE SEALANT
 "KA-__" 16 GA REAR CAP CHANNEL W/ 1/4 - 14 X 1" PNC DP3 W/O WASHER @ 24" O/C
 10. x 0.75" PPH DP3 @ 8" O/C

SECTION A-A

#E I-BEAM PENETRATION

(FRONT VIEW)

DETAIL: PANEL PENETRATION - I-BEAM

DATE:	11/21/23	SHEET:	1	OF	1
APPLICATION:	HORIZONTAL FIRE WALL, COMMERCIAL & INDUSTRIAL				
AWIP DETAIL NUMBER:	MIHW-ACI-PP-012_A				
DRAWN BY:	MMF				

929 ALDRIDGE ROAD
 VACAVILLE, CA 95688
 TEL: (707) 359-2280
 FAX: (707) 359-2286
 WWW.AWIPANELS.COM

