

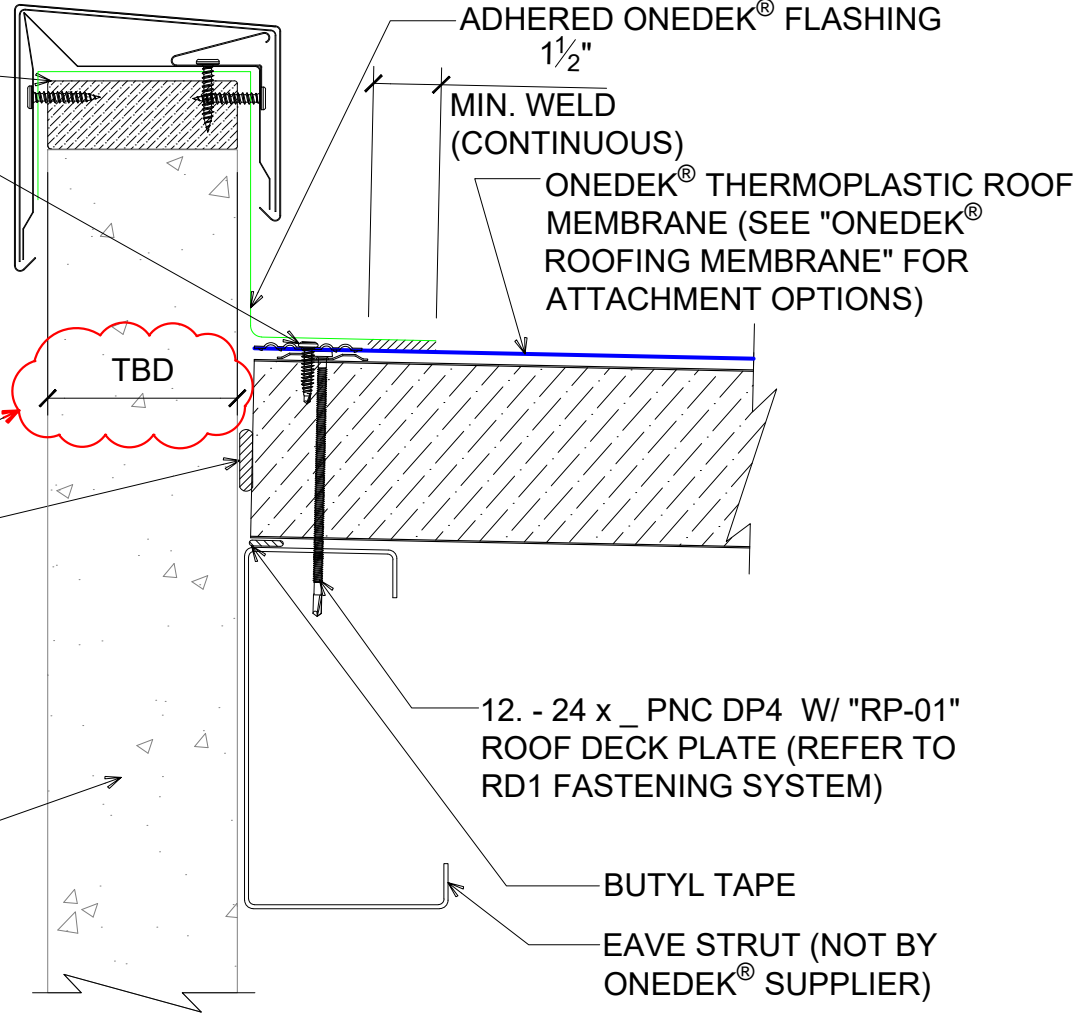
WOOD NAILER BY OTHERS
(NOT BY ONEDEK® SUPPLIER)
15. - 13 x 1.3" TRU DP1 W/
"RP-02" BARBED MEMBRANE
PLATE 6" O/C

NOTE: REFER TO DETAIL _E FOR
EDGE METAL ASSEMBLY
INFORMATION.

VERIFY

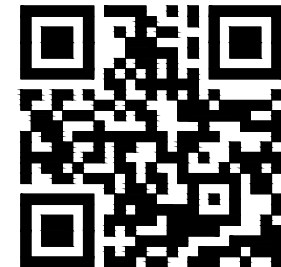
FILL VOID WITH ONE-PART
EXPANDING FOAM SEALANT
(NOT BY ONEDEK® SUPPLIER)

WALL SYSTEM BY OTHERS
(NOT BY ONEDEK® SUPPLIER)



BASE FLASHING AT PARAPET W/ METAL COPING (HIGH EAVE)

(SECTION VIEW)



DETAIL: PARAPET W/ METAL COPING (HIGH EAVE)

929 ALDRIDGE ROAD
VACAVILLE, CA 95688
TEL: (707) 359-2280
FAX: (707) 359-2286
WWW.AWIPANELS.COM

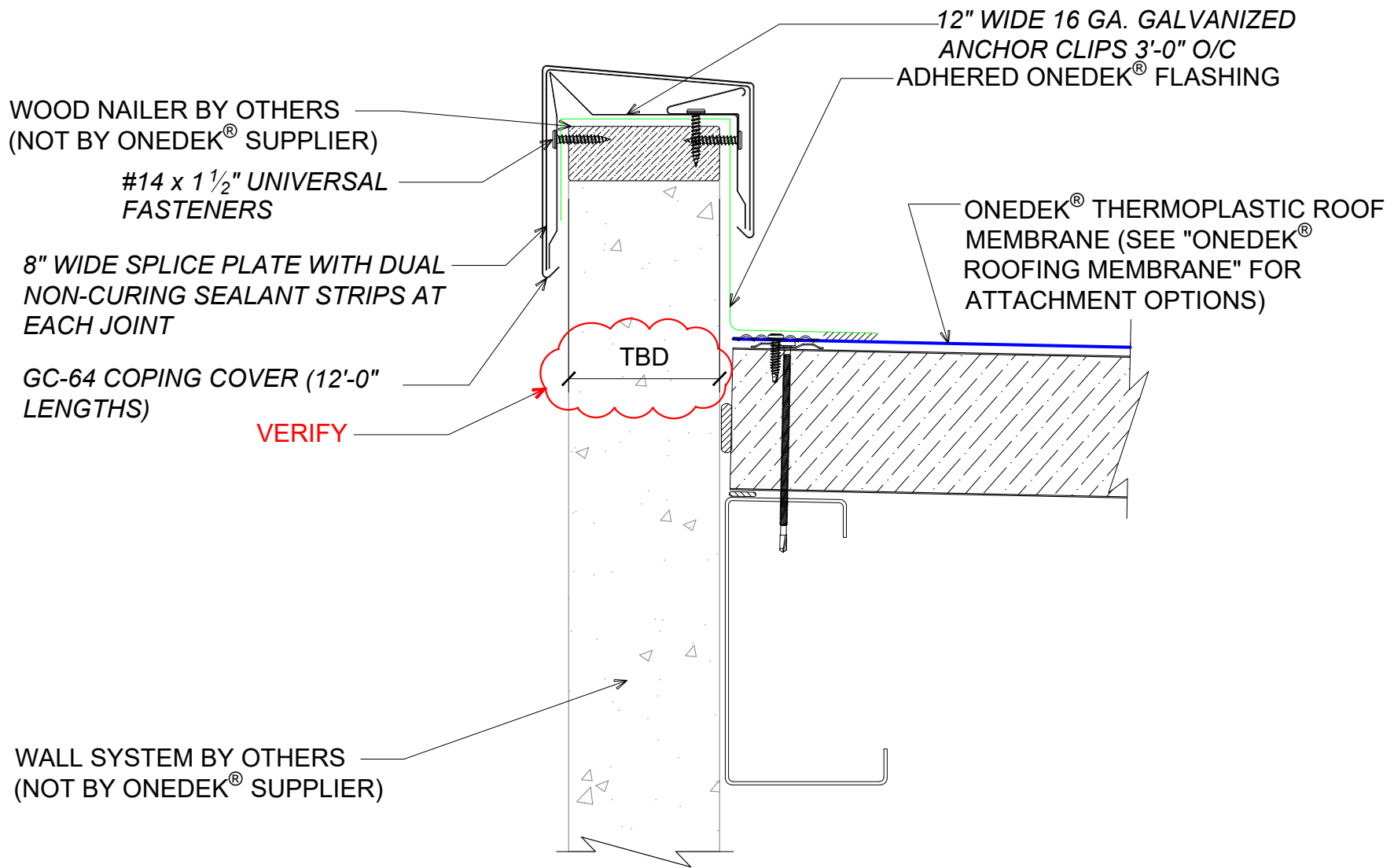
All Weather
Insulated Panels



APPLICATION:
RD1 ROOF DECK, COMMERCIAL & INDUSTRIAL, COLD-STORAGE
AWIP DETAIL NUMBER:
RDR-CICS-WBO-009

DATE:
11/06/23
DRAWN BY:
MMF

SHEET:
1 OF 1



#E BASE FLASHING AT PARAPET W/ METAL COPING (HIGH EAVE)
(SECTION VIEW)

DETAIL:	PARAPET W/ METAL COPING (HIGH EAVE), GC-64		
APPLICATION:	RD1 ROOF DECK, COMMERCIAL & INDUSTRIAL, COLD-STORAGE	DATE:	11/06/23
AWIP DETAIL NUMBER:	RDR-CICS-WBO-009	SHEET:	1 OF 1
		DRAWN BY:	MMF

929 ALDRIDGE ROAD
VACAVILLE, CA 95688
TEL: (707) 359-2280
FAX: (707) 359-2286
WWW.AWIPANELS.COM

All Weather
Insulated Panels

