

Insulated metal panels
with your design in mind



All Weather
Insulated Panels

Your vision. Our purpose.



Contents

Company Overview	3
Wall Products	4
Roof Products	17
Roof Deck Products	21
OneDek® Accessories	25
Fire-Resistant Products	28
Backup Wall Products	32
Colors & Finishes	37
GreenGuard®	40
Vision Packages & IMPpro™	42
Sustainability & Continuing Ed	45

At press time, all the information in this brochure was deemed accurate. To confirm the most recent product details, navigate to our website using the QR codes on each page.

OneDek (Diaphragm) — U.S. Patent: 11,299,899
OneDek (Diaphragm) — Canada Patent: 3,084,177
AdobeTexture — U.S. Patent: 8,458,907

All Weather Insulated Panels

Your vision. Our purpose.

All Weather Insulated Panels, an industry leader in insulated wall, roof, and deck systems, has pioneered the development of insulated metal panels for use in commercial, industrial, and temperature-controlled environments.

Our purpose at All Weather Insulated Panels is to deliver products and services that are tailored to fit your vision.

YOUR MARKET.

A Customer First approach. A purpose-built team. Three world-class manufacturing facilities in California, Arkansas, and now, Pennsylvania. All Weather Insulated Panels is distinctly positioned to support your design intent, performance requirements, and sustainability goals with our industry-leading lineup of insulated wall, roof, and deck systems.

YOUR NEEDS.

Exceptional service, a national presence, and proven experience in meeting all design requirements set our sustainable insulated wall, roof, and deck systems apart from the alternatives. Our laser focus on customers' most pressing demands reinforces our brand commitment to innovation, teamwork, and accountability.

YOUR SCHEDULE.

When it comes to addressing supply-chain issues and solving project-specific details, All Weather Insulated Panels prioritizes its customers' convenience above all else. With reliable technical support, superior customer service, and quick shipping turnarounds, we deliver on partnership, performance, and project objectives.

3

world-class manufacturing facilities are uniquely positioned to effectively service North America.

VACAVILLE, CA
LITTLE ROCK, AR
EAST STROUDSBURG, PA



300+

highly technical and resourceful employees working with you through your projects' lifecycle.

OUR VALUES:

- ACCOUNTABILITY
- COURAGE
- INNOVATION
- TEAMWORK
- INTEGRITY



Wall Products

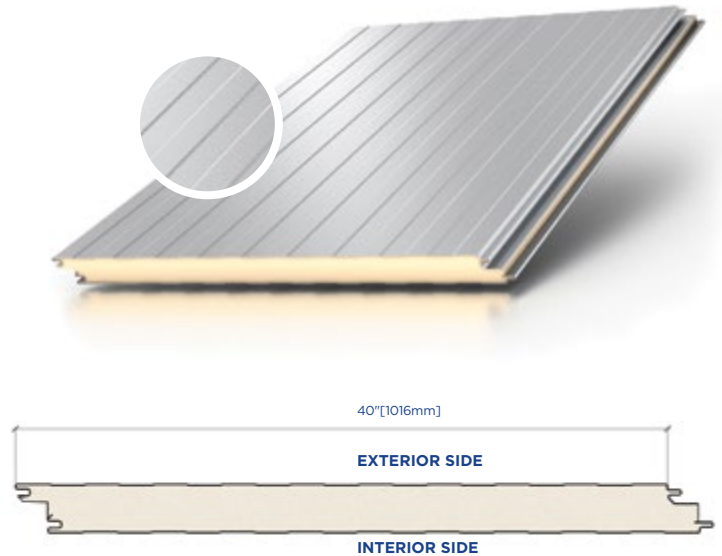


DM40 Mesa Wall Panel

An economical choice for exterior applications in industrial, commercial, and controlled environment facilities. The embossed, lightly planked surface delivers subtle shadow lines.

Features and Benefits

- Highly efficient and flexible insulated metal panel design is ideal for commercial, industrial, and controlled environment applications
- Provides long-term thermal, moisture, and vapor transmission performance
- Panel joinery is designed to permit installation of the panel vertically or horizontally
- Composite panel simplifies design, reduces complexity, improves efficiency, and reduces installation costs
- Single component wall design includes exterior aesthetic, weather barrier, insulation, and vapor barrier



Product Specifications

Profile	Exterior	Embossed, Lightly Planked, Mesa Rib					
	Interior	Embossed, Lightly Planked, Mesa Rib					
Exterior Face Skin	26 Gauge G90/AZ50, Optional Gauges: 24 and 22 G90/AZ50, 26 304 2B Stainless Steel						
Interior Face Skin	26 Gauge G90/AZ50, Optional Gauges: 24 and 22 G90/AZ50, 26 304 2B Stainless Steel						
Panel Module**	40" [1016mm]						
Lengths**	Minimum: 8' [2.44m], Maximum: 50' [15.24m]						
Side Lap	Double Tongue and Groove						
GWP[‡]	5.6 to 10.5 Lb CO ₂ eq/ft ² [27.2 to 51.2 kg CO ₂ eq/m ²]						
Core Type	Polyisocyanurate/PIR						
Thermal Performance[†]							
Thickness	2" [51mm]	2.5" [64mm]	3" [76mm]	4" [102mm]	5" [127mm]	6" [152mm]	8" [203mm]
R-Value @ 75°F mean (°F·ft²·h/BTU)	14.4	18.0	21.6	28.8	36.0	43.2	57.6
U-Value @ 75°F mean (BTU/°F·ft²·h)[‡]	0.102	0.088	0.073	0.044	0.033	0.022	0.023
R-Value @ 35°F mean (°F·ft²·h/BTU)	16.4	20.5	24.6	32.8	41.0	49.2	65.6
U-Value @ 35°F mean (BTU/°F·ft²·h)[‡]	0.093	0.078	0.064	0.034	0.027	0.020	0.018

** Contact AWIP for Custom Sizes

[†] R-Values as tested per ASTM C518

[‡] U-Values as tested per ASTM C1363

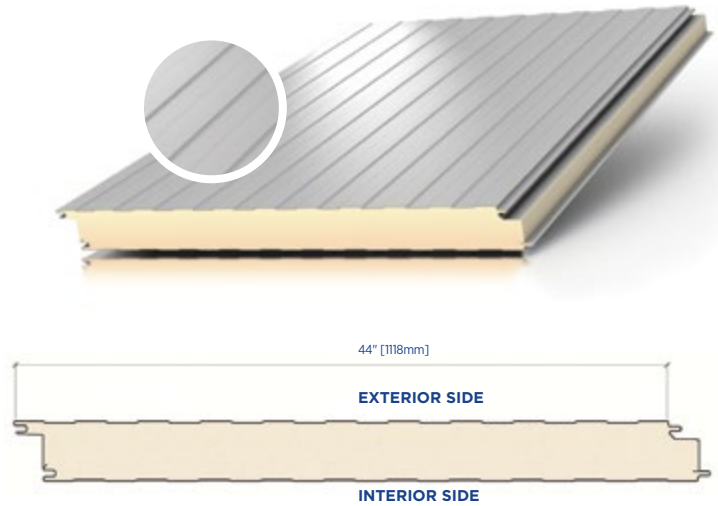
± Per EPD based on TRACI method from cradle to gate (A1-A3). Lower range based on 2" 26/26 gauge panel. Higher limit based on 6" 22/22 gauge panel. Not all profiles are available in these specific configurations, contact AWIP for more information.

DM44 Mesa Wall Panel

Designed for exterior walls in commercial, industrial, and controlled environment facilities, the DM44 Mesa is 44 inches wide and reduces installation costs. DM44 is available in PVC and stainless steel finishes for washdown areas.

Features and Benefits

- Ideal for exterior walls in controlled environments, wider modules reduce number of panels needed
- Composite panel simplifies design, reduces complexity, improves efficiency, and reduces installation costs
- Single component wall design includes clean aesthetic, thermal barrier, and washable surfaces
- Incorporate with other AWIP panels, accessories, and products for a complete system in controlled environment applications



Product Specifications[±]

Profile	Exterior	Embossed, Lightly Planked, Mesa Rib					
	Interior	Embossed, Lightly Planked, Mesa Rib					
Exterior Face Skin	26 Gauge G90/AZ50, Optional Gauges: 24 and 22 G90/AZ50, 26 304 2B Stainless Steel						
Interior Face Skin	26 Gauge G90/AZ50, Optional Gauges: 24 and 22 G90/AZ50, 26 304 2B Stainless Steel						
Panel Module**	44"[1118mm]						
Lengths**	Minimum: 8'[2.44m], Maximum: 50'[15.24m]						
Side Lap	Double Tongue and Groove						
Thermal Performance[†]							
Thickness	2"[51mm]	2.5"[64mm]	3"[76mm]	4"[102mm]	5"[127mm]	6"[152mm]	8"[203mm]
R-Value @ 75°F mean (°F·ft²·h/BTU)	14.4	18.0	21.6	28.8	36.0	43.2	57.6
U-Value @ 75°F mean (BTU/°F·ft²·h)	0.069	0.056	0.046	0.035	0.028	0.023	0.017
R-Value @ 35°F mean (°F·ft²·h/BTU)	16.4	20.5	24.6	32.8	41.0	49.2	65.6
U-Value @ 35°F mean (BTU/°F·ft²·h)	0.061	0.049	0.041	0.031	0.024	0.020	0.015

[±] DM44 is for interior applications & non-FM exterior assemblies

** Contact AWIP for Custom Sizes

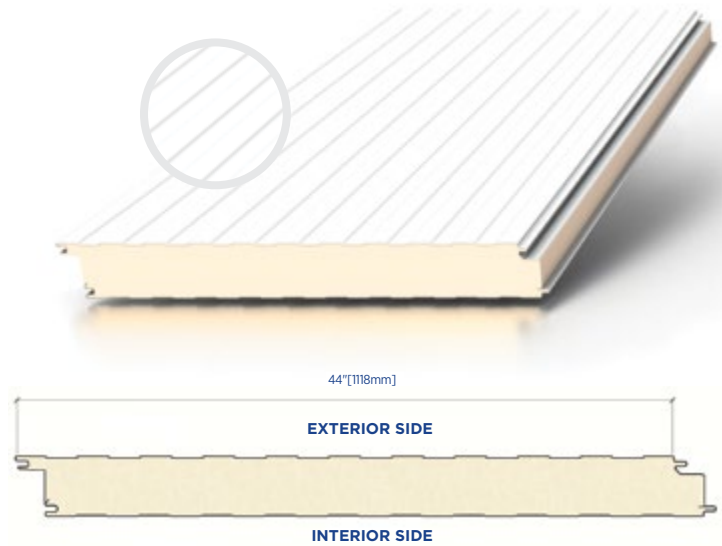
[†] Thermal values as tested per ASTM C518

IP44 Interior Partition Wall Panel

Engineered for interior use in commercial, industrial, and controlled environments, this 44-inch panel streamlines installation and reduces associated costs. IP44 is available in durable PVC and stainless steel finishes, catering to washdown areas where frequent cleaning and resilience are essential.

Features and Benefits

- Wide modules reduce the number of panels allowing faster installation
- Versatile panel can be configured as partition wall or ceiling panel
- Uniform surface is durable and washable for bright, clean appearance
- Integrate with other AWIP panels, accessories, and products to create a comprehensive system for controlled environment applications



Product Specifications[‡]

Profile	Exterior	Embossed, Lightly Planked, Mesa Rib, Optional Flat					
	Interior	Embossed, Lightly Planked, Mesa Rib, Flat					
Exterior Face Skin	26 Gauge G90/AZ50, Optional Gauges: 24 and 22 G90/AZ50, 26 304 2B Stainless Steel						
Interior Face Skin	26 Gauge G90/AZ50, Optional Gauges: 24 and 22 G90/AZ50, 26 304 2B Stainless Steel						
Panel Module**	44" [1118mm]						
Lengths**	Minimum: 8' [2.44m], Maximum: 50' [15.24m]						
Side Lap	Double Tongue and Groove						
GWP[‡]	5.6 to 10.5 Lb CO ₂ eq/ft ² [27.2 to 51.2 kg CO ₂ eq/m ²]						
Core Type	Polyisocyanurate/PIR						
Thermal Performance[†]							
Thickness	2" [51mm]	2.5" [64mm]	3" [76mm]	4" [102mm]	5" [127mm]	6" [152mm]	8" [203mm]
R-Value @ 75°F mean (°F·ft²·h/BTU)	14.4	18.0	21.6	28.8	36.0	43.2	57.6
U-Value @ 75°F mean (BTU/°F·ft²·h)[‡]	0.102	0.088	0.073	0.044	0.033	0.022	0.023
R-Value @ 35°F mean (°F·ft²·h/BTU)	16.4	20.5	24.6	32.8	41.0	49.2	65.6
U-Value @ 35°F mean (BTU/°F·ft²·h)[‡]	0.093	0.078	0.064	0.034	0.027	0.020	0.018

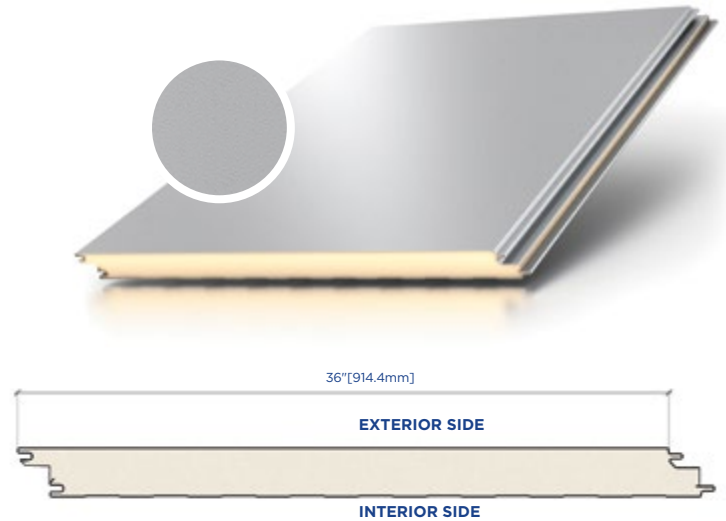
± IP44 is for interior applications only
 ** Contact AWIP for Custom Sizes
 † R-Values as tested per ASTM C518
 ‡ U-Values as tested per ASTM C1363

FL36 Flat Wall Panel

The clean flush finish of the FL panels delivers a flat monolithic uninterrupted look to your facade. These flat panels can also be mixed with other profiles to create unique banding and shadow lines on your project.

Features and Benefits

- Panel joinery is designed to permit installation of the panel vertically or horizontally
- Highly efficient and flexible insulated metal panel design is ideal for commercial, industrial, and controlled environment applications
- Smooth monolithic aesthetic economically enhances exterior facades
- Composite design requires one-step installation reducing construction time and costs
- Single component wall design includes exterior aesthetic, weather barrier, insulation, and vapor barrier



Product Specifications

Profile	Exterior	Embossed, Flat		
	Interior	Embossed, Lightly Planked, Mesa Rib		
Exterior Face Skin	22 Gauge G90/AZ50			
Interior Face Skin	26 Gauge G90/AZ50, Optional Gauges: 24 and 22 G90/AZ50, 26 304 2B Stainless Steel			
Panel Module**	36"[914mm]			
Lengths**	Minimum: 8'[2.43m], Maximum: 40'[12.19m]			
Side Lap	Double Tongue and Groove			
GWP[‡]	5.6 to 10.5 Lb CO ₂ eq/ft ² [27.5 to 50.1 kg CO ₂ eq/m ²]			
Core Type	Polyisocyanurate/PIR			
Thermal Performance[†]				
Thickness***	2"[51mm]	2.5"[64mm]	3"[76mm]	4"[102mm]
R-Value @ 75°F mean (°F·ft²·h/BTU)	14.4	18.0	21.6	28.8
U-Value @ 75°F mean (BTU/°F·ft²·h)[†]	0.102	0.088	0.073	0.044
R-Value @ 35°F mean (°F·ft²·h/BTU)	16.4	20.5	24.6	32.8
U-Value @ 35°F mean (BTU/°F·ft²·h)[†]	0.093	0.078	0.064	0.034

** Contact AWIP for Custom Sizes

*** Contact AWIP for 5" or 6" thick panel availability

† R-Values as tested per ASTM C518

‡ U-Values as tested per ASTM C1363

± Per EPD based on TRACI method from cradle to gate (A1-A3). Lower range based on 2" 26/26 gauge panel. Higher limit based on 6" 22/22 gauge panel. Not all profiles are available in these specific configurations, contact AWIP for more information.

FL40 Flat Wall Panel

The clean flush finish of the FL panels delivers a flat monolithic uninterrupted look to your facade. These flat panels can also be mixed with other profiles to create unique banding and shadow lines on your project. Wider modules reduce the number of panels needed.

Features and Benefits

- Panel joinery is designed to permit installation of the panel vertically or horizontally
- Highly efficient and flexible insulated metal panel design is ideal for commercial, industrial, and controlled environment applications
- Smooth monolithic aesthetic economically enhances exterior facades
- Composite design requires one-step installation reducing construction time and costs
- Single component wall design includes exterior aesthetic, weather barrier, insulation, and vapor barrier



Product Specifications

Profile	Exterior	Embossed, Flat		
	Interior	Embossed, Lightly Planked, Mesa Rib		
Exterior Face Skin	22 Gauge G90/AZ50			
Interior Face Skin	26 Gauge G90/AZ50, Optional Gauges: 24 and 22 G90/AZ50, 26 304 2B Stainless Steel			
Panel Module**	40" [1016mm]			
Lengths**	Minimum: 8' [2.43m], Maximum: 40' [12.19m]			
Side Lap	Double Tongue and Groove			
GWP[‡]	5.6 to 10.5 Lb CO ₂ eq/ft ² [27.5 to 50.1 kg CO ₂ eq/m ²]			
Core Type	Polyisocyanurate/PIR			
Thermal Performance[†]				
Thickness***	2" [51mm]	2.5" [64mm]	3" [76mm]	4" [102mm]
R-Value @ 75°F mean (°F·ft²·h/BTU)	14.4	18.0	21.6	28.8
U-Value @ 75°F mean (BTU/°F·ft²·h)[†]	0.102	0.088	0.073	0.044
R-Value @ 35°F mean (°F·ft²·h/BTU)	16.4	20.5	24.6	32.8
U-Value @ 35°F mean (BTU/°F·ft²·h)[†]	0.093	0.078	0.064	0.034

** Contact AWIP for Custom Sizes

*** Contact AWIP for 5" or 6" thick panel availability

† R-Values as tested per ASTM C518

‡ U-Values as tested per ASTM C1363

± Per EPD based on TRACI method from cradle to gate (A1-A3). Lower range based on 2" 26/26 gauge panel. Higher limit based on 6" 22/22 gauge panel. Not all profiles are available in these specific configurations, contact AWIP for more information.

HE40 Heavy Embossed Wall Panel

The multi-step surface embossment on these panels can deliver a distinctive look on your facade. This panel can be combined with other profiles, such as flat, to further highlight the rugged surface of this profile.

Features and Benefits

- Heavy embossment adds texture to the surface and offers a patterned flat appearance
- The panel's overlapping joint is self-aligning and available with factory or field sealant application within the panel joinery
- Irregular surface pattern minimizes surface blemishes and imperfections
- Single component wall design includes exterior aesthetic, weather barrier, insulation, and vapor barrier



Product Specifications

Profile	Exterior	Heavy Embossed				
	Interior	Embossed, Lightly Planked, Mesa Rib				
Exterior Face Skin	24 Gauge G90/AZ50, Optional Gauge: 22 G90/AZ50					
Interior Face Skin	26 Gauge G90/AZ50, Optional Gauges: 24 and 22 G90/AZ50, 26 304 2B Stainless Steel					
Panel Module**	40" [1016mm]					
Lengths**	Minimum: 8' [2.44m], Maximum: 40' [12.19m]					
Side Lap	Double Tongue and Groove					
GWP[‡]	5.6 to 10.4 Lb CO ₂ eq/ft ² [27.4 to 50.9 kg CO ₂ eq/m ²]					
Core Type	Polyisocyanurate/PIR					
Thermal Performance[†]						
Thickness	2" [51mm]	2.5" [64mm]	3" [76mm]	4" [102mm]	5" [127mm]	6" [152mm]
R-Value @ 75°F mean (°F·ft²·h/BTU)	14.4	18.0	21.6	28.8	36.0	43.2
U-Value @ 75°F mean (BTU/°F·ft²·h)[‡]	0.102	0.088	0.073	0.044	0.033	0.022
R-Value @ 35°F mean (°F·ft²·h/BTU)	16.4	20.5	24.6	32.8	41.0	49.2
U-Value @ 35°F mean (BTU/°F·ft²·h)[‡]	0.093	0.078	0.064	0.034	0.027	0.020

** Contact AWIP for Custom Sizes

[†] R-Values as tested per ASTM C518

[‡] U-Values as tested per ASTM C1363

± Per EPD based on TRACI method from cradle to gate (A1-A3). Lower range based on 2" 26/26 gauge panel. Higher limit based on 6" 22/22 gauge panel. Not all profiles are available in these specific configurations, contact AWIP for more information.

HE40A AdobeTexture® Wall Panel

The AdobeTexture wall panels give you all the benefits and simplicity of an insulated panel with the look and feel of a troweled stucco-like finish. The multi-step surface texturing and finishing is done in a controlled factory environment and the panels are shipped to site ready to install, no field painting or troweling required.

Features and Benefits

- AdobeTexture integrates a stucco look and texture into insulated metal wall panels
- Eliminates the need for sprayed elastomeric coating applications or multi-step field-applied or additional factory-applied stucco coating
- Matching AdobeTexture trim and finishing system for a clean, continuous look and feel
- Same easy, economical installation as standard IMP wall panels: Arrives on site in one piece for a simple one-step installation
- 25-year limited paint warranty against chalking, fading, and loss of adhesion
- Available colors: Regal White, Pearl Gray, Sandstone, and Surrey Beige



Product Specifications

Profile	Exterior	AdobeTexture-Flat Troweled Stucco Appearance				
	Interior	Embossed, Lightly Planked, Mesa Rib				
Exterior Face Skin	24 Gauge G90/AZ50, Optional Gauge: 22 G90/AZ50					
Interior Face Skin	26 Gauge G90/AZ50, Optional Gauges: 24 and 22 G90/AZ50					
Panel Module**	40" [1016mm]					
Lengths**	Minimum: 8' [2.44m], Maximum: 40' [12.19m]					
Side Lap	Double Tongue and Groove					
GWP[‡]	5.6 to 10.4 Lb CO ₂ eq/ft ² [27.5 to 50.9 kg CO ₂ eq/m ²]					
Core Type	Polyisocyanurate/PIR					
Thermal Performance[†]						
Thickness	2" [51mm]	2.5" [64mm]	3" [76mm]	4" [102mm]	5" [127mm]	6" [152mm]
R-Value @ 75°F mean (°F·ft²·h/BTU)	14.4	18.0	21.6	28.8	36.0	43.2
U-Value @ 75°F mean (BTU/°F·ft²·h)[‡]	0.102	0.088	0.073	0.044	0.033	0.022
R-Value @ 35°F mean (°F·ft²·h/BTU)	16.4	20.5	24.6	32.8	41.0	49.2
U-Value @ 35°F mean (BTU/°F·ft²·h)[‡]	0.093	0.078	0.064	0.034	0.027	0.020

** Contact AWIP for Custom Sizes

[†] R-Values as tested per ASTM C518

[‡] U-Values as tested per ASTM C1363

± Per EPD based on TRACI method from cradle to gate (A1-A3). Lower range based on 2" 26/26 gauge panel. Higher limit based on 6" 22/22 gauge panel. Not all profiles are available in these specific configurations, contact AWIP for more information.

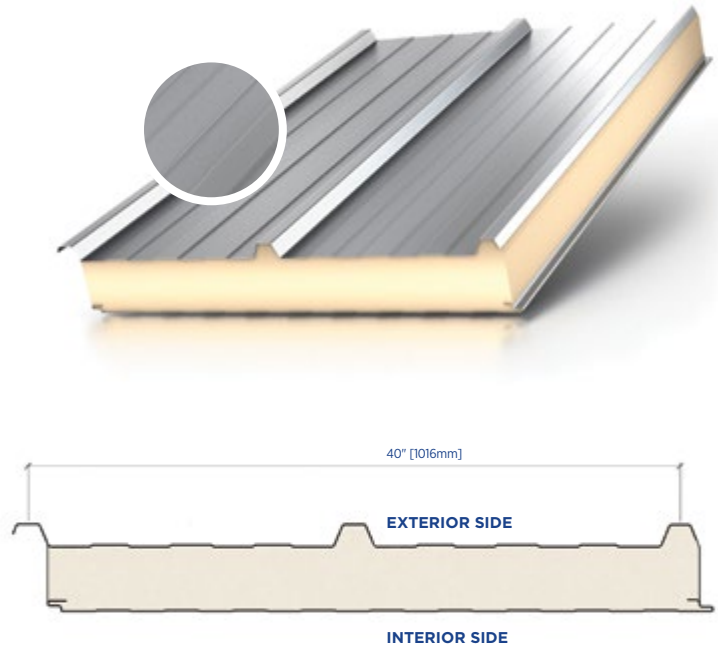
Note: AdobeTexture is only available on exterior side of profile.

HR3-W High Rib Wall Panel

Through a single pass on the wall, create the look of classic board-and-batten for a unique aesthetic. This panel simplifies your project design and reduces complexity during installation.

Features and Benefits

- Rugged industrial aesthetic and faster installation achieved with exposed through fasteners
- Weathertight design for use in both retrofit or new construction applications
- Composite panel simplifies design, reduces complexity, improves efficiency, and reduces installation costs
- Single component wall design includes exterior aesthetic, weather barrier, insulation, and vapor barrier



Product Specifications

Profile	Exterior	Smooth, Trapezoid		
	Interior	Embossed, Lightly Planked, Mesa Rib		
Exterior Face Skin	26 Gauge G90 Galvanized or AZ50 Galvalume. 24 and 22 Gauge optional			
Interior Face Skin	26 Gauge G90/AZ50, Optional Gauges: 24 and 22 G90/AZ50, 26 304 2B Stainless Steel*			
Panel Module**	40" [1016mm]			
Lengths**	Minimum: 8' [2.4m], Maximum: 40' [12.2m]			
Side Lap	Exterior: Trapezoidal Overlap		Interior: Shiplap	
GWP[‡]	5.6 to 10.4 Lb CO ₂ eq/ft ² [27.3 to 50.9 kg CO ₂ eq/m ²]			
Core Type	Polyisocyanurate/PIR			
Thermal Performance[†]				
Thickness	1.5" [38mm]	2.5" [64mm]	3" [76mm]	4" [102mm]
R-Value @ 75°F mean (°F·ft²·h/BTU)	10.8	18.0	21.6	28.8
U-Value @ 75°F mean (BTU/°F·ft²·h)[†]	N/A	0.087	0.073	0.040
R-Value @ 35°F mean (°F·ft²·h/BTU)	12.3	20.5	24.6	32.8
U-Value @ 35°F mean (BTU/°F·ft²·h)[†]	N/A	0.078	0.062	0.032

* For interior applications only

** Contact AWIP for Custom Sizes

† R-Values as tested per ASTM C518

‡ U-Values as tested per ASTM C1363

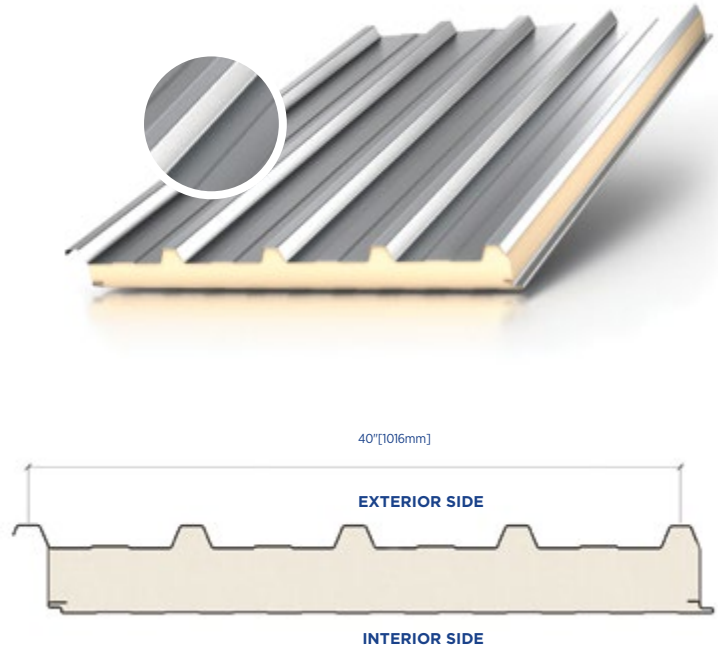
± Per EPD based on TRACI method from cradle to gate (A1-A3). Lower range based on 2" 26/26 gauge panel. Higher limit based on 6" 22/22 gauge panel. Not all profiles are available in these specific configurations, contact AWIP for more information.

HR5-W High Rib Wall Panel

This product offers an economical solution for exposed fastener wall systems. Suitable for both retrofit and new construction projects, the washable interior surface provides a sleeker alternative to loose insulation or sheathing.

Features and Benefits

- Rugged industrial aesthetic and faster installation achieved with exposed through fasteners
- Unique aesthetic similar to the classic board-and-batten look in a single pass on the wall
- Composite panel simplifies design, reduces complexity, improves efficiency, and reduces installation costs
- Single component wall design includes exterior aesthetic, weather barrier, insulation, and vapor barrier



Product Specifications

Profile	Exterior	Smooth, Trapezoid		
	Interior	Embossed, Lightly Planked, Mesa Rib		
Exterior Face Skin	26 Gauge G90 Galvanized or AZ50 Galvalume. 24 and 22 Gauge optional			
Interior Face Skin	26 Gauge G90/AZ50, Optional Gauges: 24 and 22 G90/AZ50, 26 304 2B Stainless Steel			
Panel Module**	40" [1016mm]			
Lengths**	Minimum: 8' [2.4m], Maximum: 40' [12.2m]			
Side Lap	Exterior: Trapezoidal Overlap		Interior: Shiplap	
GWP[‡]	5.6 to 10.6 Lb CO ₂ eq/ft ² [27.5 to 51.5 kg CO ₂ eq/m ²]			
Core Type	Polyisocyanurate/PIR			
Thermal Performance[†]				
Thickness	1.5" [38mm]	2.5" [64mm]	3" [76mm]	4" [102mm]
R-Value @ 75°F mean (°F·ft²·h/BTU)	10.8	18.0	21.6	28.8
U-Value @ 75°F mean (BTU/°F·ft²·h)[‡]	N/A	0.087	0.073	0.040
R-Value @ 35°F mean (°F·ft²·h/BTU)	12.3	20.5	24.6	32.8
U-Value @ 35°F mean (BTU/°F·ft²·h)[‡]	N/A	0.078	0.062	0.032

* For interior applications only

** Contact AWIP for Custom Sizes

† R-Values as tested per ASTM C518

‡ U-Values as tested per ASTM C1363

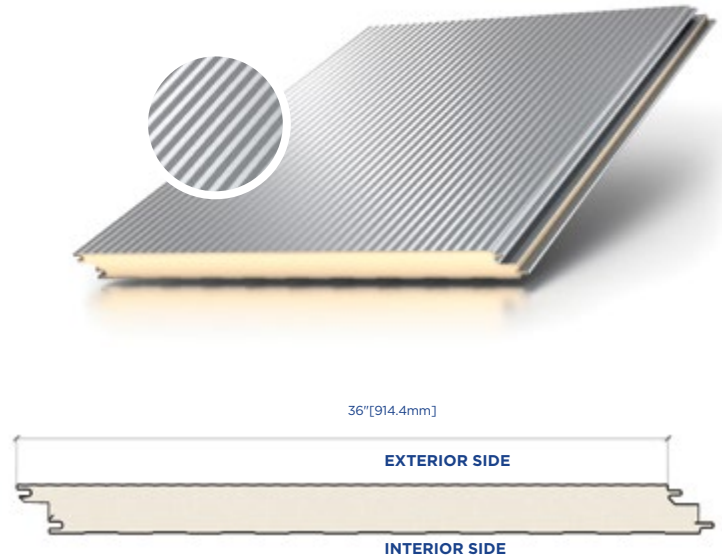
± Per EPD based on TRACI method from cradle to gate (A1-A3). Lower range based on 2" 26/26 gauge panel. Higher limit based on 6" 22/22 gauge panel. Not all profiles are available in these specific configurations, contact AWIP for more information.

ST36 Striated Wall Panel

Slight striations on these panels yield an attractive modern look while adding rigidity to the metal surface. The striations also cast faint, playful shadow lines for your facade and can offer contrast when used with flat or other profiled panels.

Features and Benefits

- The panel's overlapping joint is self-aligning and allows for easy sealant application at the panel joinery
- The standard exterior metal surface is embossed 24ga G-90/AZ50 steel with standard PVDF and SMP exterior coatings. (Other coatings may be available.)
- Slight undulations in the exterior surface ripple light and limit appearance of surface imperfections
- Composite panel simplifies design, reduces complexity, improves efficiency, and reduces installation costs



Product Specifications

Profile	Exterior	Embossed, Striated				
	Interior	Embossed, Lightly Planked, Mesa Rib				
Exterior Face Skin	24 Gauge G90/AZ50, Optional Gauges: 22 G90/AZ50					
Interior Face Skin	26 Gauge G90/AZ50, Optional Gauges: 24 and 22 G90/AZ50, 26 304 2B Stainless Steel*					
Panel Module***	36" [914mm]					
Lengths***	Minimum: 8' [2.44m], Maximum: 40' [12.19m]					
Side Lap	Double Tongue and Groove					
GWP†	5.6 to 10.3 Lb CO ₂ eq/ft ² [27.3 to 50.5 kg CO ₂ eq/m ²]					
Core Type	Polyisocyanurate/PIR					
Thermal Performance†						
Thickness	2" [51mm]	2.5" [64mm]	3" [76mm]	4" [102mm]	5" [127mm]**	6" [152mm]**
R-Value @ 75°F mean (°F·ft²·h/BTU)	14.4	18.0	21.6	28.8	36.0	43.2
U-Value @ 75°F mean (BTU/°F·ft²·h)†	0.102	0.088	0.073	0.044	0.033	0.022
R-Value @ 35°F mean (°F·ft²·h/BTU)	16.4	20.5	24.6	32.8	41.0	49.2
U-Value @ 35°F mean (BTU/°F·ft²·h)†	0.093	0.078	0.064	0.034	0.027	0.020

* For interior applications only

** 22 gauge required on exterior facing

*** Contact AWIP for Custom Sizes

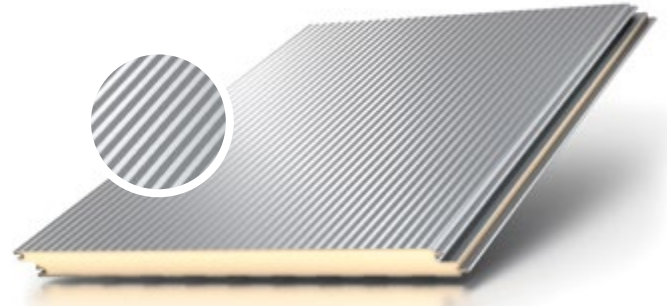
† R-Values as tested per ASTM C518

‡ U-Values as tested per ASTM C1363

± Per EPD based on TRACI method from cradle to gate (A1-A3). Lower range based on 2" 26/26 gauge panel. Higher limit based on 6" 22/22 gauge panel. Not all profiles are available in these specific configurations, contact AWIP for more information.

ST40 Striated Wall Panel

The striated insulated metal wall panel is an excellent option for both exterior and interior applications, offering a sleek, modern appearance. The embossed striations not only enhance the panel's strength but also ensure a high level of flatness tolerance. These panels are well-suited for creating contemporary facades on light commercial buildings, warehouses, schools, shopping centers, and industrial structures.



Features and Benefits

- The panel's overlapping joint is self-aligning and allows for easy sealant application at the panel joinery
- The standard exterior metal surface is embossed 24ga G-90/AZ50 steel with standard PVDF and SMP exterior coatings. (Other coatings may be available.)
- Slight undulations in the exterior surface ripple light and limit appearance of surface imperfections
- Composite panel simplifies design, reduces complexity, improves efficiency, and reduces installation costs



Product Specifications

Profile	Exterior	Embossed, Striated				
	Interior	Embossed, Lightly Planked, Mesa Rib				
Exterior Face Skin	24 Gauge G90/AZ50, Optional Gauges: 22 G90/AZ50					
Interior Face Skin	26 Gauge G90/AZ50, Optional Gauges: 24 and 22 G90/AZ50, 26 304 2B Stainless Steel*					
Panel Module***	40" [1016mm]					
Lengths***	Minimum: 8' [2.44m], Maximum: 40' [12.19m]					
Side Lap	Double Tongue and Groove					
GWP[‡]	5.6 to 10.3 Lb CO ₂ eq/ft ² [27.3 to 50.5 kg CO ₂ eq/m ²]					
Core Type	Polyisocyanurate/PIR					
Thermal Performance[†]						
Thickness	2" [51mm]	2.5" [64mm]	3" [76mm]	4" [102mm]	5" [127mm]**	6" [152mm]**
R-Value @ 75°F mean (°F·ft²·h/BTU)	14.4	18.0	21.6	28.8	36.0	43.2
U-Value @ 75°F mean (BTU/°F·ft²·h)[†]	0.102	0.088	0.073	0.044	0.033	0.022
R-Value @ 35°F mean (°F·ft²·h/BTU)	16.4	20.5	24.6	32.8	41.0	49.2
U-Value @ 35°F mean (BTU/°F·ft²·h)[†]	0.093	0.078	0.064	0.034	0.027	0.020

* For interior applications only

** 22 gauge required on exterior facing

*** Contact AWIP for Custom Sizes

† R-Values as tested per ASTM C518

‡ U-Values as tested per ASTM C1363

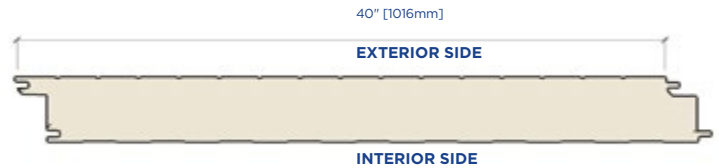
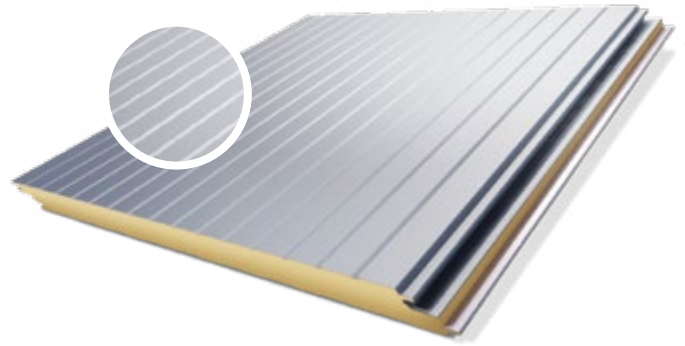
± Per EPD based on TRACI method from cradle to gate (A1-A3). Lower range based on 2" 26/26 gauge panel. Higher limit based on 6" 22/22 gauge panel. Not all profiles are available in these specific configurations, contact AWIP for more information.

MV40 Micro-Vee Wall Panel

Enjoy the ease of effortless installation with the Micro-Vee profile. Delivering a sleek, contemporary look, this panel's flat surface and refined lines achieve a clean and sophisticated aesthetic.

Features and Benefits

- Meticulously designed to deliver a sleek aesthetic that blends seamlessly into any architectural vision
- The panel's overlapping joint is self-aligning and allows for easy sealant application at the panel joinery
- The standard exterior metal surface is 24 gauge G90/AZ50 steel with SMP or PVDF coatings
- The standard interior metal surface is 26 gauge Imperial White polyester



Product Specifications

Profile	Exterior	Embossed, Micro-Vee				
	Interior	Embossed, Lightly Planked, Mesa Rib				
Exterior Face Skin	24 Gauge G90/AZ50, Optional Gauges: 22 G90/AZ50					
Interior Face Skin	26 Gauge G90/AZ50, Optional Gauges: 24 and 22 G90/AZ50, 26 304 2B Stainless Steel					
Panel Module**	40"[1016mm]					
Lengths**	Minimum: 8'[2.44m], Maximum: 40'[12.19m]					
Side Lap	Double Tongue and Groove					
GWP[‡]	5.6 to 10.3 Lb CO ₂ eq/ft ² [27.3 to 50.5 kg CO ₂ eq/m ²]					
Core Type	Polyisocyanurate/PIR					
Thermal Performance[†]						
Thickness	2"[51mm]	2.5"[64mm]	3"[76mm]	4"[102mm]	5"[127mm]	6"[152mm]
R-Value @ 75°F mean (°F·ft²·h/BTU)	14.4	18.0	21.6	28.8	36	43.2
U-Value @ 75°F mean (BTU/°F·ft²·h)[‡]	0.102	0.088	0.073	0.044	0.033	0.022
R-Value @ 35°F mean (°F·ft²·h/BTU)	16.4	20.5	24.6	32.8	41	49.2
U-Value @ 35°F mean (BTU/°F·ft²·h)[‡]	0.093	0.078	0.064	0.034	0.027	0.020

* For interior applications only

** Contact AWIP for Custom Sizes

† R-Values as tested per ASTM C518

‡ U-Values as tested per ASTM C1363

± Per EPD based on TRACI method from cradle to gate (A1-A3). Lower range based on 2" 26/26 gauge panel. Higher limit based on 6" 22/22 gauge panel. Not all profiles are available in these specific configurations, contact AWIP for more information.



Roof Products

Caelesta Winery | Templeton, CA

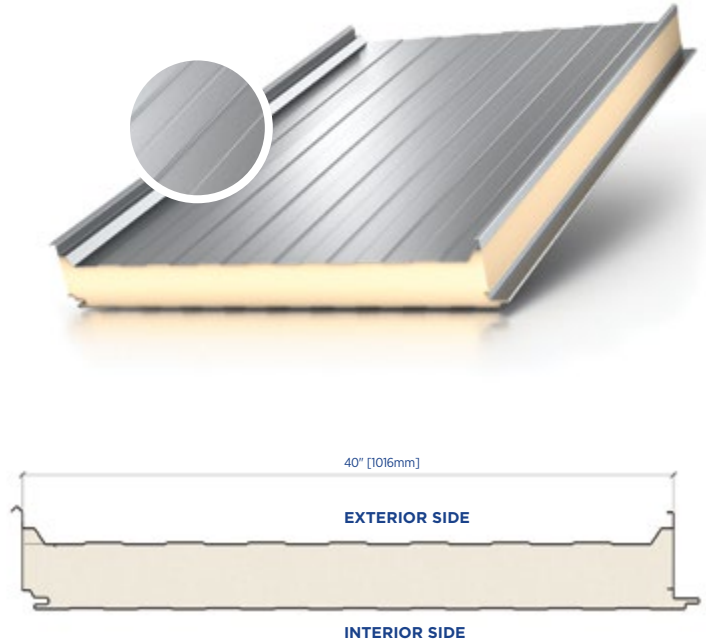


SR2 Standing Seam Roof Panel

For the look of a traditional metal standing seam with all the benefits of an insulated metal panel, try our standing seam roof profile. SR2 offers field-seamed, hidden fastener joinery for architectural appeal and maximum protection against the elements.

Features and Benefits

- Hidden fastener joinery provides clean appearance and protection against the elements
- Weathertight design for use in both retrofit or new construction applications
- Composite panel simplifies design, reduces complexity, improves efficiency, and reduces installation costs
- Single component roof design includes exterior aesthetic, weather barrier, insulation and vapor barrier



Product Specifications

Profile	Exterior	Smooth		
	Interior	Embossed, Lightly Planked, Mesa Rib		
Exterior Face Skin	26 Gauge G90 Galvanized or AZ50 Galvalume. 24 and 22 Gauge optional			
Interior Face Skin	26 Gauge G90/AZ50, Optional Gauges: 24 and 22 G90/AZ50, 26 304 2B Stainless Steel*			
Slope Requirements**	Minimum 1/2: 12			
Panel Module	40" [1016mm]			
Lengths***	Minimum: 8' [2.44m], Maximum: 50' [15.24m]			
Side Lap	Exterior: Standing Seam		Interior: Tongue and Groove	
GWP‡	5.6 to 10.5 Lb CO ₂ eq/ft ² [27.4 to 51.3 kg CO ₂ eq/m ²]			
Core Type	Polyisocyanurate/PIR			
Thermal Performance†				
Thickness	3.25" [82mm]	4" [102mm]	5" [127mm]	6" [125mm]
R-Value @ 75°F mean (°F·ft ² ·h/BTU)	23.4	28.8	36.0	43.2
U-Value @ 75°F mean (BTU/°F·ft ² ·h)†	0.063	0.040	0.031	0.022
R-Value @ 35°F mean (°F·ft ² ·h/BTU)	26.6	32.8	41.0	49.2
U-Value @ 35°F mean (BTU/°F·ft ² ·h)†	0.054	0.031	0.026	0.020

* For interior application only

** Contact AWIP for Custom Slope

*** Contact AWIP for Custom Sizes

† R-Values as tested per ASTM C518

‡ U-Values as tested per ASTM C1363

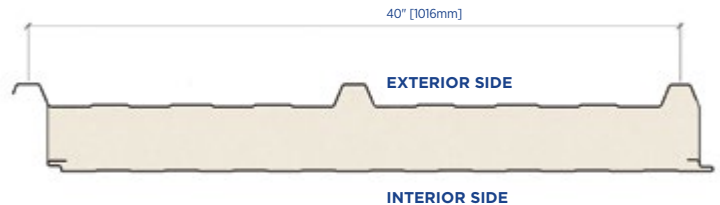
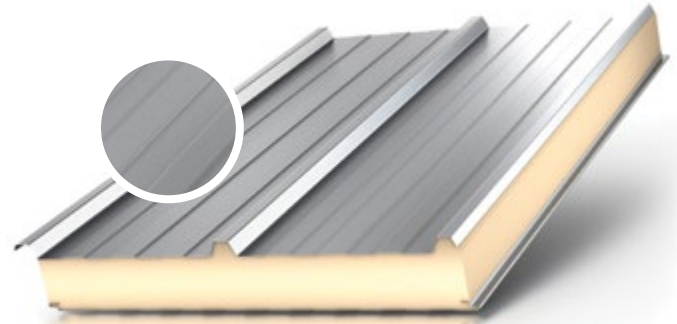
± Per EPD based on TRACI method from cradle to gate (A1-A3). Lower range based on 2" 26/26 gauge panel. Higher limit based on 6" 22/22 gauge panel. Not all profiles are available in these specific configurations, contact AWIP for more information.

HR3 High Rib Roof Panel

The HR3 offers a cost-effective option for exposed fastener roofing systems, perfect for retrofit or new construction. It features a washable interior surface, delivering a polished look compared to loose insulation or sheathing.

Features and Benefits

- Rugged industrial aesthetic and faster installation achieved with exposed through fasteners
- Weathertight design for use in both retrofit or new construction applications
- Composite panel simplifies design, reduces complexity, improves efficiency, and reduces installation costs
- Single component roof design includes exterior aesthetic, weather barrier, insulation, and vapor barrier



Product Specifications

Profile	Exterior	Trapezoid				
	Interior	Embossed, Lightly Planked, Mesa Rib				
Exterior Face Skin	26 Gauge G90 Galvanized or AZ50 Galvalume. 24 and 22 Gauge optional					
Interior Face Skin	26 Gauge G90/AZ50, Optional Gauges: 24 and 22 G90/AZ50, 26 304 2B Stainless Steel*					
Slope Requirements**	Minimum 1:12					
Panel Module	40"[1016mm]					
Lengths***	Minimum: 8'[2.44m], Maximum: 50'[15.24m]					
Side Lap	Exterior: Trapezoidal Overlap			Interior: Shiplap		
GWP[‡]	5.6 to 10.6 Lb CO ₂ eq/ft ² [27.5 to 51.5 kg CO ₂ eq/m ²]					
Core Type	Polyisocyanurate/PIR					
Thermal Performance[†]						
Thickness	1.5"[38mm]	2.5"[64mm]	3"[76mm]	4"[102mm]	5"[127mm]	6"[152mm]
R-Value @ 75°F mean (°F·ft²·h/BTU)	10.8	18.0	21.6	28.8	36.0	43.2
U-Value @ 75°F mean (BTU/°F·ft²·h)[†]	N/A	0.087	0.073	0.040	0.031	0.022
R-Value @ 35°F mean (°F·ft²·h/BTU)	12.3	20.5	24.6	32.8	41.0	49.2
U-Value @ 35°F mean (BTU/°F·ft²·h)[†]	N/A	0.078	0.062	0.032	0.026	0.020

* For interior application only

** Contact AWIP for Custom Slope

*** Contact AWIP for Custom Sizes

† R-Values as tested per ASTM C518

‡ U-Values as tested per ASTM C1363

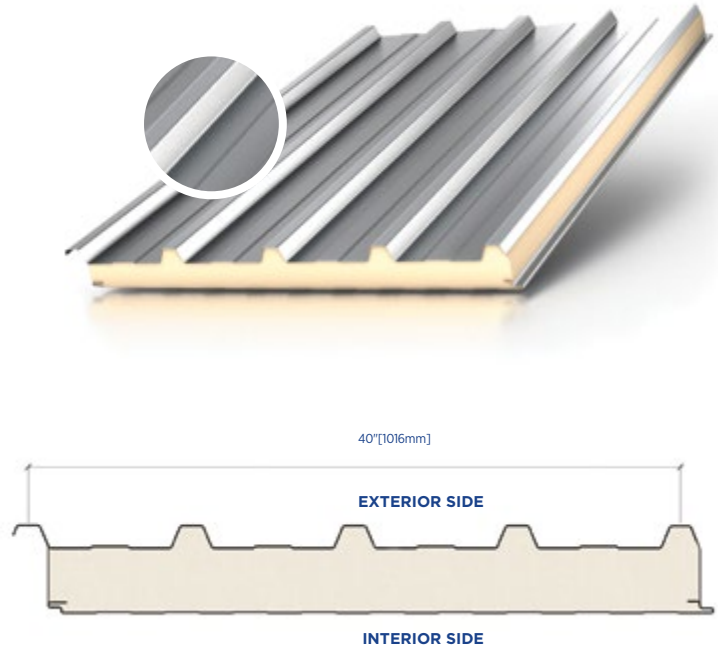
± Per EPD based on TRACI method from cradle to gate (A1-A3). Lower range based on 2" 26/26 gauge panel. Higher limit based on 6" 22/22 gauge panel. Not all profiles are available in these specific configurations, contact AWIP for more information.

HR5 High Rib Roof Panel

An economical solution for an exposed fastener roofing system, HR5 can be used for retrofit or new construction projects and includes a washable interior surface that is sleeker than loose insulation or sheathing.

Features and Benefits

- Rugged industrial aesthetic and faster installation achieved with exposed through fasteners
- Weathertight design for use in both retrofit or new construction applications
- Composite panel simplifies design, reduces complexity, improves efficiency, and reduces installation costs
- Single component roof design includes exterior aesthetic, weather barrier, insulation and vapor barrier



Product Specifications

Profile	Exterior	Trapezoid				
	Interior	Embossed, Lightly Planked, Mesa Rib				
Exterior Face Skin	26 Gauge G90 Galvanized or AZ50 Galvalume. 24 and 22 Gauge optional					
Interior Face Skin	26 Gauge G90/AZ50, Optional Gauges: 24 and 22 G90/AZ50, 26 304 2B Stainless Steel*					
Slope Requirements**	Minimum 1:12					
Panel Module	40" [1016mm]					
Lengths***	Minimum: 8' [2.44m], Maximum: 50' [15.24m]					
Side Lap	Exterior: Trapezoidal Overlap			Interior: Shiplap		
GWP [‡]	5.6 to 10.4 Lb CO ₂ eq/ft ² [27.3 to 50.9 kg CO ₂ eq/m ²]					
Core Type	Polyisocyanurate/PIR					
Thermal Performance [†]						
Thickness	1.5" [38mm]	2.5" [64mm]	3" [76mm]	4" [102mm]	5" [127mm]	6" [152mm]
R-Value @ 75°F mean (°F·ft ² ·h/BTU)	10.8	18.0	21.6	28.8	36.0	43.2
U-Value @ 75°F mean (BTU/°F·ft ² ·h) [†]	N/A	0.087	0.073	0.040	0.031	0.022
R-Value @ 35°F mean (°F·ft ² ·h/BTU)	12.3	20.5	24.6	32.8	41.0	49.2
U-Value @ 35°F mean (BTU/°F·ft ² ·h) [†]	N/A	0.078	0.062	0.032	0.026	0.020

* For interior application only

** Contact AWIP for Custom Slope

*** Contact AWIP for Custom Sizes

† R-Values as tested per ASTM C518

‡ U-Values as tested per ASTM C1363

± Per EPD based on TRACI method from cradle to gate (A1-A3). Lower range based on 2" 26/26 gauge panel. Higher limit based on 6" 22/22 gauge panel. Not all profiles are available in these specific configurations, contact AWIP for more information.

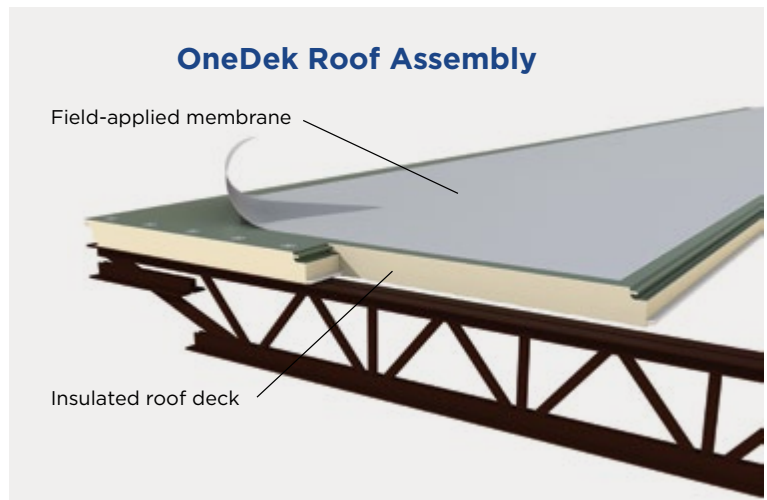


Roof Deck Products



OneDek Insulated Roof Deck

OneDek is an alternative to traditional multi-layer low-slope roof systems. Replacing steel deck and multiple layers of ISO board insulation, a OneDek system requires fewer components and fewer steps to install, saving construction time and labor, while providing exceptional energy efficiency for your roof system. An industry-first, deck through membrane 20-year weathertightness warranty is available.



Fewer components, fewer steps, single source.

Feature	Function	Benefit
Fewer Components to Skin the Roof	Simplifies design, reduces sourcing and installation time significantly	Reduced lead-time, entire roof system, purlins out, delivered to site in 16-20 weeks*
		Material costs are similar, lower installation costs, building dried in faster
		Reduced materials, complexity and costs
		Trucks to jobsite reduced up to 30%**
		Assembly steps reduced by up to 75%
	Provides roof membrane as a complete system package	Able to take on diaphragm shear load from the building superstructure
Composite Design of Insulated Roof Deck	Foam core sandwiched between interior and exterior steel facing	Single component acting as decking, air and vapor barrier, insulation and coverboard
	Insulated roof deck is weather resistant	Phased construction: Interior trades can work in parallel with membrane installation
	Provides a durable uniform surface	Walkable surface ideal for membrane installation without coverboard
	Closed cell foam	Water-resistant polyiso foam chemically bonded to steel facings
Fewer Penetrations	Deck attachment fasteners into framing are the only through fasteners required	Significantly reduces number of through fasteners, reducing risk of failure
	Insulation fastener eliminated	Reduced installation time and risk of failure; enhanced interior appearance
	Membrane fasteners installed into exterior facing only	1-1/4" fasteners simplifies installation process and enhances interior appearance
20-Year System Weathertight Warranty	Provided by single manufacturer	Enhances roof value to owner
	Covers decking, insulation, membrane, and edge metal	Less risk if issues arise
Factory Painted Facings	Clean finished interior aesthetic	Eliminates the need for an aesthetic ceiling system
		Standard white finish can reduce interior lighting required†
		No field painting required eliminates cost
Various Thicknesses Available	Customizable thermal and structural performance specific to project requirements	No extra insulation layers or steps required to achieve R-values 14-57 °F•ft ² •h/BTU‡

* Lead-times based on date of publication. Please contact your local sales representative for current lead-times

** Reference OneDek® System Comparison Leveraging Product and Single Source Advantages Versus Traditional Systems

± Warranties are subject to review, and may require components purchased from single manufacturer

† See color chart for alternative finish options

‡ As tested per ASTM C518 at 75° F mean temperature

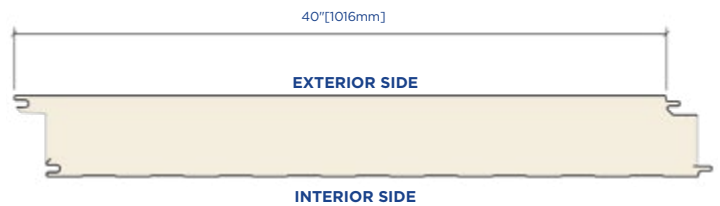
RD1 Insulated Roof Deck: A Component of OneDek

The first component down in the OneDek assembly, the RD1 panel delivers a walkable surface, with a clean washable interior, that provides thermal and overall weather resistance in a single pass. Complete the roof by installing components to manage water to drainage location(s) and apply a membrane.



Features and Benefits

- Fewer materials, components, trucks to site, installation steps, penetrations, and trades save time and reduce cost
- Insulated roof deck is a single component functioning as the deck, air and vapor barrier, insulation, and coverboard while providing a uniform walkable surface ideal for membrane installation
- Single point of accountability from the roof structure (decking, insulation, membrane and edge metal) out for weathertightness warranties and components
- Coil coated interior skin eliminates the need for field painting of the decking. Interior can be painted virtually any color.



Product Specifications

Profile	Exterior	Smooth Flat					
	Interior	Embossed, Lightly Planked, Mesa Rib					
Exterior Face Skin	26 Gauge G90 Galvanized or AZ50 Galvalume. 24 and 22 Gauge optional						
Interior Face Skin	26 Gauge G90 Galvanized or AZ50 Galvalume. 24 and 22 Gauge optional, 26 304 2B Stainless Steel*						
Slope Requirements	Minimum 1/4:12 Slope		Maximum 1:12 TPO, 2:12 PVC				
Panel Module	40" [1016mm]						
Lengths**	Minimum: 8' [2.44m], Maximum: 50' [15.24m]						
Side Lap	Double Tongue and Groove						
GWP[‡]	5.7 to 10.6 Lb CO ₂ eq/ft ² [27.6 to 51.9 kg CO ₂ eq/m ²]						
Core Type	Polyisocyanurate/PIR						
Thermal Performance[†]							
Thickness	2" [51mm]	2.5" [64mm]	3" [76mm]	4" [102mm]	5" [127mm]	6" [152mm]	8" [203mm]
R-Value @ 75°F mean (°F·ft²·h/BTU)	14.4	18.0	21.6	28.8	36.0	43.2	57.6
U-Value @ 75°F mean (BTU/°F·ft²·h)[†]	0.102	0.088	0.073	0.044	0.033	0.022	0.023
R-Value @ 35°F mean (°F·ft²·h/BTU)	16.4	20.5	24.6	32.8	41.0	49.2	65.6
U-Value @ 35°F mean (BTU/°F·ft²·h)[†]	0.093	0.078	0.064	0.034	0.027	0.020	0.018

* For interior application only

** Contact AWIP for Custom Sizes

† R-Values as tested per ASTM C518

‡ U-Values as tested per ASTM C1363

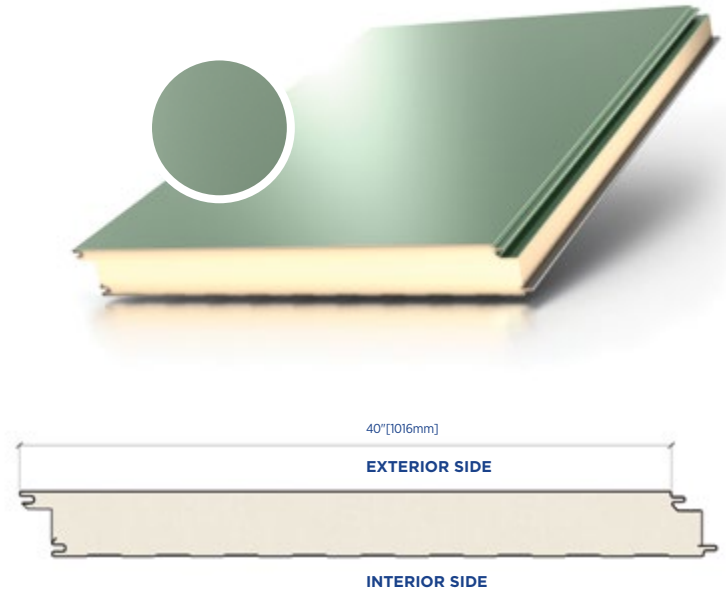
± Per EPD based on TRACI method from cradle to gate (A1-A3). Lower range based on 2" 26/26 gauge panel. Higher limit based on 6" 22/22 gauge panel. Not all profiles are available in these specific configurations, contact AWIP for more information.

RD1-M Insulated Roof Deck: A Component of OneDek

The first component down in the OneDek assembly, the RD1-M panel delivers a walkable surface, with a clean washable interior, that provides thermal and overall weather resistance in a single pass. Complete the roof by installing components to manage water to drainage location(s) and apply a membrane.

Features and Benefits

- Fewer materials, components, trucks to site, installation steps, penetrations, and trades save time and reduce cost
- Insulated roof deck is a single component functioning as the deck, air and vapor barrier, insulation, and coverboard while providing a uniform walkable surface ideal for membrane installation
- Single point of accountability from the roof structure (decking, insulation, membrane and edge metal) out for weathertightness warranties and components
- Coil coated interior skin eliminates the need for field painting of the decking. Interior can be painted virtually any color.



Product Specifications

Profile	Exterior	Smooth Flat					
	Interior	Embossed, Lightly Planked, Mesa Rib					
Exterior Face Skin	22 Gauge G90/AZ50						
Interior Face Skin	26 Gauge G90 Galvanized or AZ50 Galvalume. 24 and 22 Gauge optional, 26 304 2B Stainless Steel*						
Slope Requirements	Minimum 1/4:12 Slope		Maximum 2:12 TPO or PVC				
Panel Module	40"[1016mm]						
Lengths**	Minimum: 8'[2.44m], Maximum: 50'[15.24m]						
Side Lap	Double Tongue and Groove						
GWP[‡]	5.7 to 10.6 Lb CO ₂ eq/ft ² [27.6 to 51.9 kg CO ₂ eq/m ²]						
Core Type	Polyisocyanurate/PIR						
Thermal Performance[†]							
Thickness	2"[51mm]	2.5"[64mm]	3"[76mm]	4"[102mm]	5"[127mm]	6"[152mm]	8"[203mm]
R-Value @ 75°F mean (°F·ft²·h/BTU)	14.4	18.0	21.6	28.8	36.0	43.2	57.6
U-Value @ 75°F mean (BTU/°F·ft²·h)[‡]	0.102	0.088	0.073	0.044	0.033	0.022	0.023
R-Value @ 35°F mean (°F·ft²·h/BTU)	16.4	20.5	24.6	32.8	41.0	49.2	65.6
U-Value @ 35°F mean (BTU/°F·ft²·h)[‡]	0.093	0.078	0.064	0.034	0.027	0.020	0.018

* For interior application only

** Contact AWIP for Custom Sizes

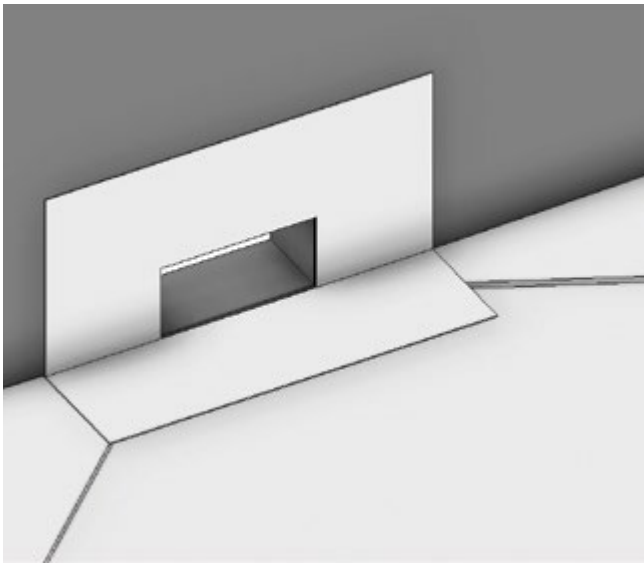
† R-Values as tested per ASTM C518

‡ U-Values as tested per ASTM C1363

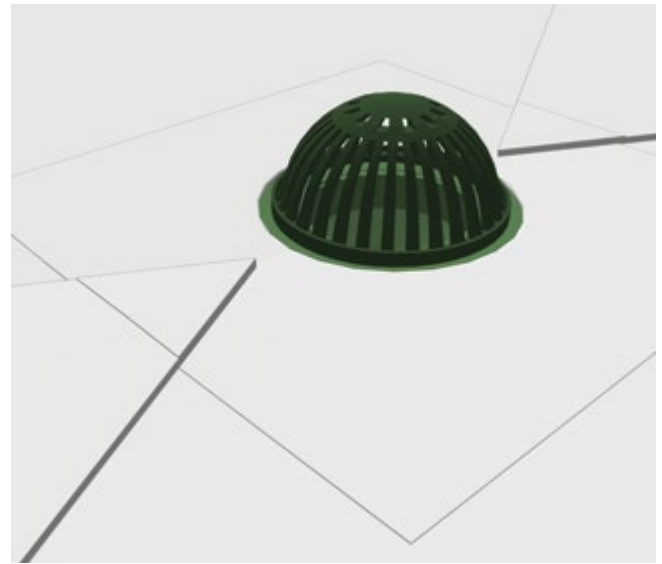
± Per EPD based on TRACI method from cradle to gate (A1-A3). Lower range based on 2" 26/26 gauge panel. Higher limit based on 6" 22/22 gauge panel. Not all profiles are available in these specific configurations, contact AWIP for more information.

OneDek Accessories Scuppers, Internal Drains, Tapered Insulation

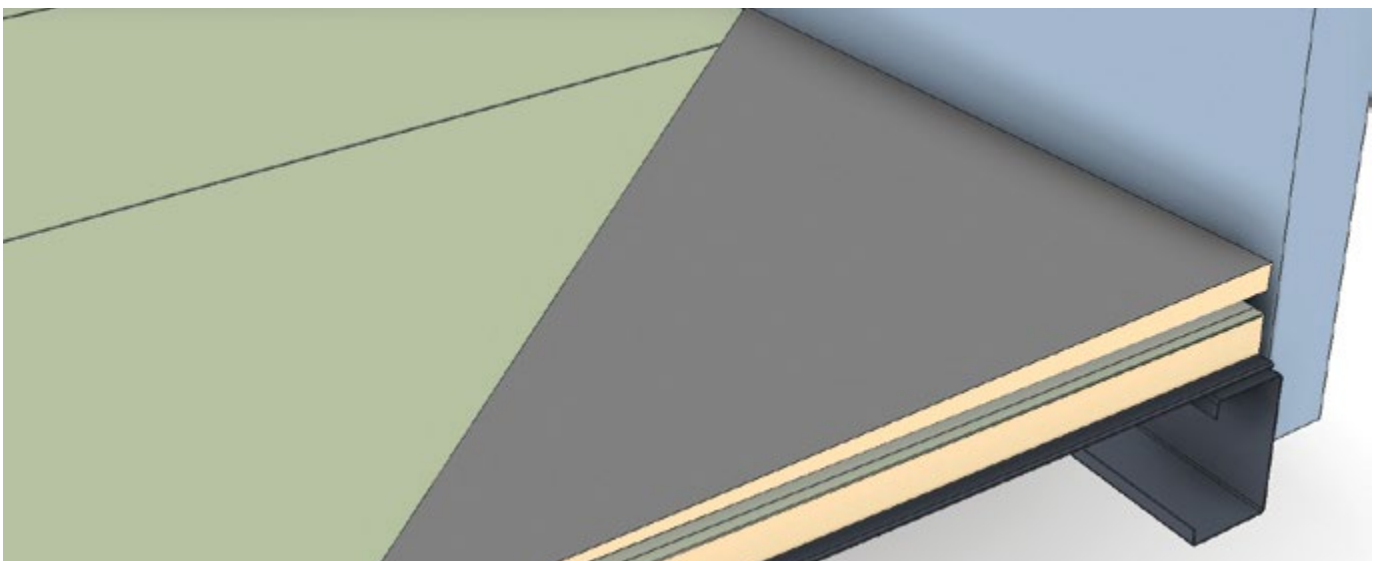
OneDek roofing accessories play a pivotal role in ensuring the durability, functionality, and overall performance of the roofing systems. These accessories, ranging from tapered insulation to flashing and drainage solutions, are specifically designed to address the unique challenges of roofs with minimal slope. Effective low-slope roofing accessories help manage water runoff and prevent leaks. Every OneDek order with accessories goes through a review by AWIP's technical team in an effort to optimize the performance of the overall system.



Scuppers



Internal Drains



Tapered insulation

OneDek Edge Metal Offerings Metal-Era Products

With installation that's a snap compared to other roof edge designs, Metal-Era fascia products save you lots of time. Just as important, these prefabricated components come in a range of great-looking styles for your building. They're tested to the strictest building codes and are backed by some of the strongest warranties in the industry.



Anchor-Tite Advantages

- Lifetime, 215 MPH wind warranty
- Simple, snap-on design cover with no need to strip-in or heat weld
- Prefabricated miters and accessories ensure proper fit and eliminate field fabrication
- Manufactured in 12' lengths with pre-punched holes to reduce installation time



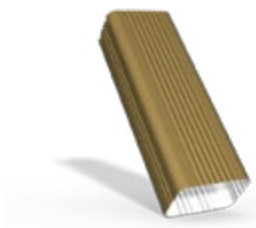
Perma-Tite Gold Coping Advantages

- Lifetime, 215 MPH wind warranty
- Reduces labor time and costs with simple, snap-on installation
- Prefabricated miters, fasteners, and accessories ensure proper fit and eliminate field fabrication
- Facilitates correct placement and proper thermal movement with slotted fastening holes



One Drip Edge

- 10 year, 90 MPH wind warranty
- PVC and TPO options available from a variety of membrane manufacturers
- Convenient 10' or 12' lengths, depending on the membrane manufacturer
- Pre-slotted fastening holes to ensure proper spacing and thermal movement



Seal-Tite LT Corrugated Downspout

- Engineered to complement the Seal-Tite LT Gutter System, ensuring a seamless and cohesive installation
- Designed for durability and reliability
- Prefabricated in the factory for reduced on-site labor and fabrication time
- A wide variety of standard colors and finishes

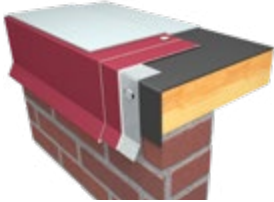


Seal-Tite WR Gutter Advantages

- Includes manufacturer's 30 year, 160 MPH wind warranty
- ANSI/SPRI/GT-1 tested to comply with International Building Code
- Slotted fastening holes to ensure correct fastener placement and spacing
- Prefabricated miters, fasteners, and accessories ensure proper fit and eliminate field fabrication

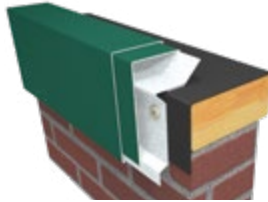
OneDek Edge Metal Offerings ATAS Products

ATAS products are designed for quick and easy installation, saving you valuable time compared to other roof edge designs. These prefabricated components are available in a variety of stylish options to enhance your building's appearance. Engineered to meet the toughest building codes, they also come with industry-leading warranties for added peace of mind.



Drip Edge Fascia

- Continuous 22 gauge steel cleat with flange for easier installation and proper location
- Standard 90° roof flange or requested roof slope
- Three standard sizes: 4.75", 6.25", 7.75" (custom sizes available)



Rapid-LOK Fascia

- ATAS' best fascia system that installs quickly on all single-ply membranes without strip-in plies or heat welding
- Continuous 20 gauge retainer with snap-on cover
- Three standard sizes: 5.5", 7", 8.5" (custom sizes available)
- 30 year 150 MPH windstorm warranty



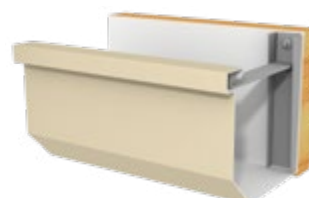
Rapid-LOK Coping

- Snap-on system with no exposed fasteners
- Heavy 20 gauge chairs with factory installed splice plates
- Guttered "Dry" splice plates eliminate the need for caulks or tapes at the joints
- 20 year 120 MPH windstorm warranty



Downspout

- Offered in 4" x 5" water control solution
- Seamed to maximize water control
- Downspout straps are included, and outlet tubes, elbows, and offsets are available



Ultra HP Gutter

- Designed to resist high winds and tested per ANSI/SPRI GT-1 for wind resistance performance
- High performance internal bracket for superior wind resistance
- Standard 12'-0" and 25'-0" lengths

Fire-Resistant Products

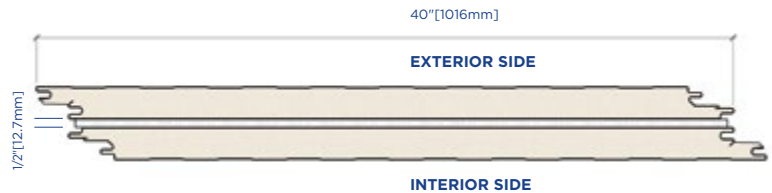
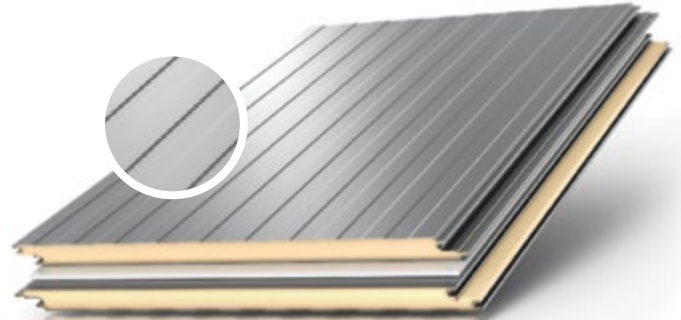


fiRe 1-Hour Rated Wall Panel

FiRe products deliver the benefits of an insulated metal panel with a 1-hour fire rating. Available in many of our standard profiles, fiRe products are aesthetically pleasing concealed fastener panels. Compared to a typical 1-hour rated mineral fiber panel, our 4.5-inch thick fiRe panels have better R-values and weigh less, making them a great choice for your project.

Features and Benefits

- Factory assembled composite for one-step installation
- Composite panel system is lighter than comparable mineral fiber panels with similar R-value
- Available in all 40-inch wide AWIP wall panel profiles
- Hidden fastening at joints
- Designed for interior partitions or exterior wall applications



Product Specifications

Profile	DM40-F, FL40-F, HE40-F, HE40A-F, MV40-F, ST40-F
Exterior Face Skin	26 Gauge G90 Galvanized or AZ50 Galvalume
Interior Face Skin	26 Gauge G90 Galvanized or AZ50 Galvalume
Panel Module	40" [1016mm]
Lengths	Minimum: 8' [2.44m], Maximum: 40' [12.19m]
Side Lap	Tongue and Groove
Core Type	Polyisocyanurate/PIR
Thermal Performance[†]	
Thickness	4.5" [114mm]
R-Value @ 75°F mean (°F·ft²·h/BTU)	28.8
U-Value @ 75°F mean (BTU/°F·ft²·h)[‡]	0.055
R-Value @ 35°F mean (°F·ft²·h/BTU)	32.8
U-Value @ 35°F mean (BTU/°F·ft²·h)[‡]	0.051

[†] R-Values as tested per ASTM C518

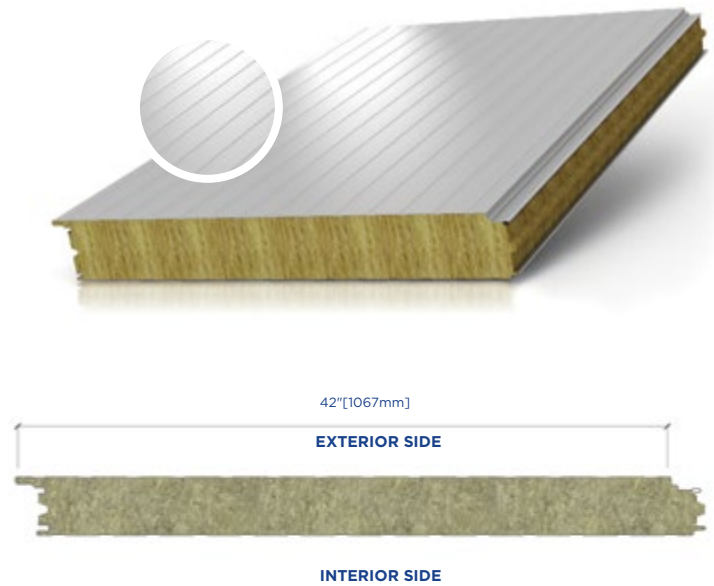
[‡] U-Values as tested per ASTM C1363

PL42-MW Hourly Rated Wall Panel

Made from natural and recycled materials, this 42-inch panel benefits the environment while offering the advantage of quick installation. Available in 1-, 2- and 3-hour fire rated wall assemblies, this non-combustible solution does not contribute to flame spread.

Features and Benefits

- Non-combustible and does not contribute to flame spread
- 42-inch wide modules for more efficient installation
- The exterior metal surface is embossed 26 gauge G90/AZ50 steel with standard PVDF and SMP exterior coatings (other coatings may be available)
- The standard interior metal surface is embossed 26 gauge Imperial White
- The panel arrives on site in one piece and requires a simple one-step installation, reducing construction time and costs



Product Specifications

Profile	Exterior	Stucco or Non-Embossed	
	Interior	Stucco or Non-Embossed	
Exterior Face Skin	26 Gauge G90/AZ50, Optional Gauges: 24 and 22 G90/AZ50		
Interior Face Skin	26 Gauge G90/AZ50, Optional Gauges: 24 and 22 G90/AZ50		
Panel Module	42" [1067mm]		
Lengths	Minimum: 8' [2.44m], Maximum: 48' [14.63m]		
Side Lap	Tongue and Groove		
Core Type	Mineral Wool		
Thermal Performance[†]			
Thickness	4" [102mm]	6" [152mm]	8" [203mm]
R-Value @ 75°F mean (°F·ft²·h/BTU)	16.0	24.0	32.0
U-Value @ 75°F mean (BTU/°F·ft²·h)	0.0625	0.0416	0.0312

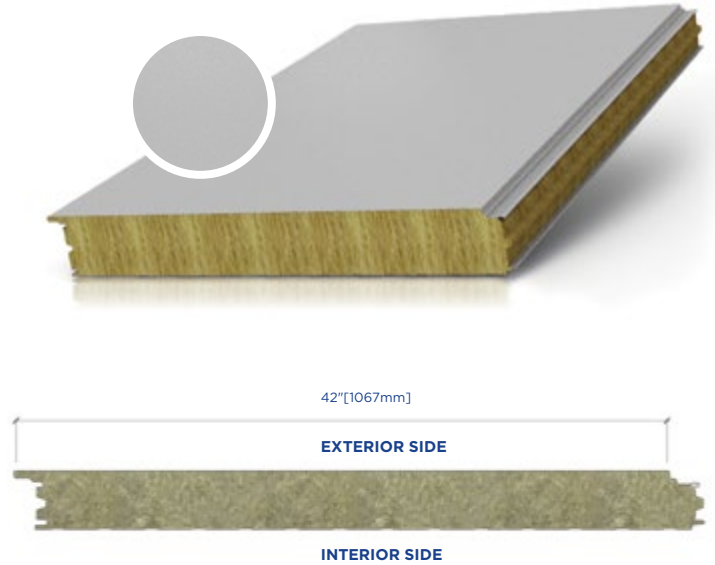
[†] Thermal values as tested per ASTM C518

HE42-MW Hourly Rated Wall Panel

Made from natural and recycled materials, the 42-inch panel benefits the environment while offering the advantage of quick installation.

Features and Benefits

- Non-combustible core does not contribute to flame spread
- 42-inch wide modules for more efficient installation
- Available in 1-, 2-, and 3-hour fire rated wall assemblies
- The exterior metal surface is embossed 24 gauge G90/AZ50 steel with standard PVDF and SMP exterior coatings



Product Specifications

Profile	Exterior	Heavy Embossed	
	Interior	Standard Embossed	
Exterior Face Skin	24 Gauge G90/AZ50, Optional Gauges: 22 G90/AZ50		
Interior Face Skin	26 Gauge G90/AZ50, Optional Gauges: 24, 22 G90/AZ50		
Panel Module	42" [1067mm]		
Lengths	Minimum: 8' [2.44m], Maximum: 48' [14.63m]		
Side Lap	Tongue and Groove		
Core Type	Mineral Wool		
Thermal Performance[†]			
Thickness	4" [102mm]	6" [152mm]	8" [203mm]
R-Value @ 75°F mean (°F·ft²·h/BTU)	16.0	24.0	32.0
U-Value @ 75°F mean (BTU/°F·ft²·h)	0.0625	0.0416	0.0312

[†] Thermal values as tested per ASTM C518

Backup Wall Products

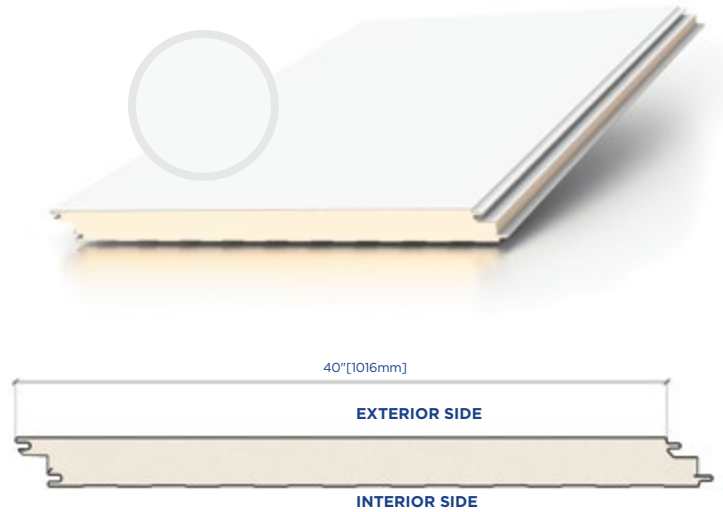


FW40 FASSADE Wall Panel

Single component wall design offers an exterior aesthetic, weather barrier, insulation and vapor barrier for long-term stability.

Features and Benefits

- Single component wall design includes exterior aesthetic, weather barrier, insulation and vapor barrier for long term stability
- Panel joinery is designed for installation of the panel vertically or horizontally
- Single component acts as a barrier against mold, erosion, and structural breaches
- Low maintenance solution
- Composite design requires one-step installation reducing construction time and costs
- Composite backup wall allows the installation of different exterior metal panel systems



Product Specifications

Profile	Exterior	Non-Embossed, Flat					
	Interior	Embossed, Lightly Planked, Mesa Rib					
Exterior Face Skin	26, 24 and 22 Gauge						
Interior Face Skin	26 Gauge G90/AZ50, Optional Gauges: 24 and 22 G90/AZ50, 26 304 2B Stainless Steel						
Panel Module**	40" [1016mm]						
Lengths**	Minimum: 8' [2.43m], Maximum: 50' [15.24m]						
Side Lap	Double Tongue and Groove						
Core Type	Polyisocyanurate/PIR						
GWP[‡]	5.6 to 10.5 Lb CO ₂ eq/ft ² [27.3 to 51.1 kg CO ₂ eq/m ²]						
Thermal Performance[†]							
Thickness***	2" [51mm]	2.5" [64mm]	3" [76mm]	4" [102mm]	5" [127mm]	6" [152mm]	8" [203mm]
R-Value @ 75°F mean (°F·ft²·h/BTU)	14.4	18.0	21.6	28.8	36.0	43.2	57.6
U-Value @ 75°F mean (BTU/°F·ft²·h)[†]	0.102	0.088	0.073	0.044	0.033	0.022	0.023
R-Value @ 35°F mean (°F·ft²·h/BTU)	16.4	20.5	24.6	32.8	41.0	49.2	65.6
U-Value @ 35°F mean (BTU/°F·ft²·h)[†]	0.093	0.078	0.064	0.034	0.027	0.020	0.018

** Contact AWIP for Custom Sizes

*** Contact AWIP for 5" or 6" thick panel availability

† R-Values as tested per ASTM C518

‡ U-Values as tested per ASTM C1363

± Per EPD based on TRACI method from cradle to gate (A1-A3). Lower range based on 2" 26/26 gauge panel. Higher limit based on 6" 22/22 gauge panel. Not all profiles are available in these specific configurations, contact AWIP for more information.

FASSADE with Bellara Plank

Our Bellara Plank steel siding series is an ideal choice for both residential and commercial projects. These 12-foot planks are incredibly versatile, serving a variety of purposes—from creating captivating wall features to crafting elegant soffits. The siding is designed to emulate natural wood, engineered from steel, and built to last a lifetime. For those who appreciate the beauty of woodgrain finishes, our Bellara Plank offers a hyper-realistic appearance without the environmental impact of using real wood.



Features and Benefits

- Discover the elegance of our color-coordinated trim system, designed to create a flawless and integrated look for your project
- The planks come with perforations and can be paired with solid planks to ensure optimal airflow
- The ultra-high resolution imaging technology captures the fine details of wood specimens, showcasing Bellara’s woodgrain patterns

Product Specifications

Fastening System	Hidden
Application	Wall
Panel Width	Plank 90: 3.64"[92mm] Plank 135: 5.34"[135mm] Plank 200: 7.84"[199mm]
Panel Length	12'[3.66m]
Profile Depth	0.59"[15mm]
Screw Holes	Width: 0.187"[4.76mm] Height: 0.63"[16.0mm]
Screw Holes Spacing	2.0" (50.8mm) center to center
Available Gauges	Plank 90: 24GA, 0.695 Plank 135: 24GA, 26GA Plank 200: 26GA, 0.832
Weight - LB/FEET*	Plank 90: 24GA, 0.0695 26GA, 0.553 Plank 135: 24GA, 0.836 26GA, 0.666 Plank 200: 24GA, 1.045 24GA, 1.045
Installation Direction	Horizontal & vertical



* Perforations only available with Plank 135. Perforations will void warranty.

FASSADE with Bellara Board & Batten

Our Bellara Board & Batten steel siding series is an ideal choice for both residential and commercial projects. Bellara Board & Batten is available in two sizes, offering the option of tighter or more widely spaced battens. These vertical 12-foot planks create a visually striking look that adds character and depth to any space. Engineered from steel, they are designed to last a lifetime.

Features and Benefits

- Ideal for both accent walls and complete exterior applications
- Bellara showcases a blend of adaptability and visual beauty
- Its resistance to warping, cracking, and shrinking ensures long-lasting durability



Product Specifications

Fastening System	Hidden
Application	Wall
Panel Width	Board & Batten 140: 5.6"[142.2mm] Board & Batten 260: 10.18"[258.6mm]
Profile Depth	0.59"[15mm]
Panel Length	12'[3.66m]
Screw Holes	Width: 0.187"[4.76mm] Height: 0.63"[16.0mm]
Screw Holes Spacing	2.0"[50.8mm] center to center
Available Gauges	Board & Batten 140: 26GA Board & Batten 260: 26GA
Weight - LB/FEET	Board & Batten 140: 0.610 Board & Batten 260: 0.915
Installation Direction	Vertical



FASSADE with Bellara Lap Siding

Bellara Steel Lap Siding is an ideal choice for both residential and commercial projects. With its beautiful embossed finish, our lap siding elevates your project to new heights.

Features and Benefits

- Bellara steel siding is built to last a lifetime
- The fasteners for Bellara lap siding are concealed, providing a tight, secure fit to the fascia. These fasteners won't loosen over time, unlike traditional nails
- The horizontal panels overlap, creating a smooth and continuous look



Product Specifications

Fastening System	Hidden
Application	Wall
Panel Width	6.18"[157.3mm]
Profile Depth	0.74"[18.8mm]
Panel Length	12'[3.66m]
Screw Holes	Width: 0.63"[16.0mm] Height: 0.187"[4.76mm]
Screw Holes Spacing	2.0"[50.8mm] center to center
Available Gauges	26GA
Weight - LB/FEET	0.610
Installation Direction	Horizontal





Colors & Finishes

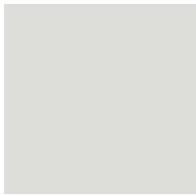


Colors

All Weather Insulated Panels (AWIP) offers factory coating solutions for a multitude of building designs and performance requirements. Equipped with the latest cool color pigment technologies and a variety of specific formulations to protect your building envelope from the outside or the inside, AWIP has the paint system to match your task.

- Embossed metal surfaces are offered as a standard on wall panels and non-embossed (smooth) for roof panels. Non-embossed finishes may be available on wall panels upon request depending on color, gauge and end use.
- Premium colors, paint systems and special orders are subject to higher pricing and extended lead times.
- Complete paint system specifications and standard finish warranties are available upon request.

Standard SMP



IMPERIAL WHITE
SR .70 | E .86 | SRI 85



POLAR WHITE
SR .60 | E .87 | SRI 71



LIGHT STONE
SR .56 | E .87 | SRI 66



SANDSTONE
SR .60 | E .86 | SRI 71

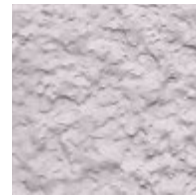


BURNISHED SLATE
SR .32 | E .87 | SRI 33



SURREY BEIGE
SR .53 | E .86 | SRI 61

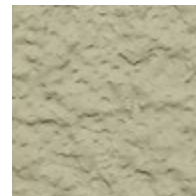
AdobeTexture®



REGAL WHITE
SR .68 | E .87 | SRI 82



PEARL GRAY
SR .45 | E .88 | SRI 51



SANDSTONE
SR .58 | E .87 | SRI 68



SURREY BEIGE
SR .48 | E .87 | SRI 51

Premium SMP



ASH GRAY
SR .46 | E .87 | SRI 52



GRIZZLE GRAY
SR .33 | E .87 | SRI 35

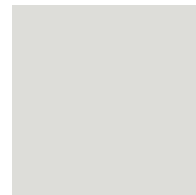


ALMOND
SR .63 | E .86 | SRI 75



TUNDRA
SR .44 | E .87 | SRI 49

Standard Interior Polyester



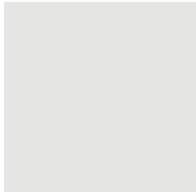
IMPERIAL WHITE
SR .66 | E .85 | SRI 79

The colors shown here are representative only and not necessarily true reproductions of actual coating colors. All performance data (SR, E and SRI) listed for SMP and PVDF, unless otherwise noted, are for AW500 and AW1000 finish systems, respectively.

For further information regarding color availability in nonstandard finish systems, please contact your local sales representative. Color chips are available upon request.

AdobeTexture® — U.S. Patent: 8,458,907

Standard PVDF*



REGAL WHITE
SR .72 | E .87 | SRI 88



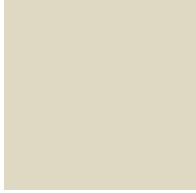
LIGHT FRENCH GRAY
SR .60 | E .87 | SRI 71



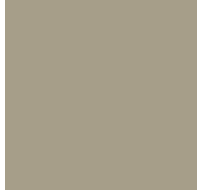
PEARL GRAY
SR .49 | E .86 | SRI 56



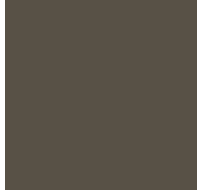
TUNDRA
SR .45 | E .87 | SRI 51



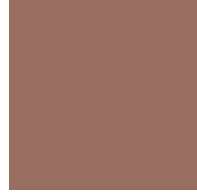
ALMOND
SR .63 | E .87 | SRI 75



SURREY BEIGE
SR .48 | E .85 | SRI 54



MEDIUM BRONZE
SR .33 | E .86 | SRI 34



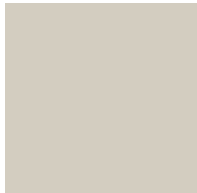
REDDENED EARTH
SR .44 | E .86 | SRI 49



SLATE GRAY
SR .40 | E .87 | SRI 44



SANDSTONE
SR .61 | E .85 | SRI 72

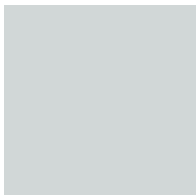


WARM WHITE
SR .64 | E .87 | SRI 77



ROYAL BLUE
SR .29 | E .86 | SRI 29

Premium PVDF*



SNOW WHITE
SR .67 | E .87 | SRI 81



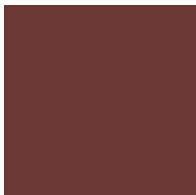
PEPPERCORN
SR .33 | E .87 | SRI 35



VIRTUAL TAUPE
SR .40 | E .87 | SRI 44



WEATHERED COPPER
SR .28 | E .87 | SRI 28



COLONIAL RED**
SR .33 | E .87 | SRI 35



EVERGREEN
SR .28 | E .86 | SRI 27



SLATE BLUE
SR .30 | E .87 | SRI 31

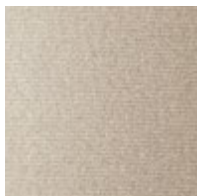


NAVAL
SR .29 | E .87 | SRI 29

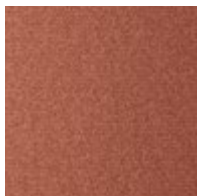
PVDF - MICA (2 COAT)*



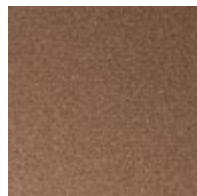
PEWTER
SR .44 | E .84 | SRI 48



CHAMPAGNE METALLIC BRONZE
SR .34 | E .84 | SRI 35



CORTEN STEEL
SR .35 | E .88 | SRI 38



TEXTURED BRONZE
SR .34 | E .88 | SRI 48

*AWIP reserves the right to supply FEVE resin as a substitute for PVDF based on availability with or without notice. This substitution will not impact warranty or performance of the paint system.

**AW1250 Finish System



GreenGuard



AWIP All Weather Insulated Panels

AWIP is a high performance, multi-layered, composite panel designed for use in a wide range of applications. It is made from a combination of polystyrene foam, fiberglass, and a protective outer layer. This construction provides excellent thermal insulation, sound absorption, and fire resistance. AWIP panels are easy to install and maintain, making them an ideal choice for a variety of building projects.

AWIP panels are available in a range of sizes and thicknesses to suit your specific requirements. They are also available in a variety of colors and finishes to match your building's exterior. For more information on the benefits and applications of AWIP panels, please contact us today.

GreenGuard® LG XPS Insulation Board for Cold Storage Applications

GreenGuard GG25-LG, GG30-LG, GG40-LG, GG60-LG Insulation Board comprises 2" to 4" thick closed-cell polystyrene (XPS) with a minimum compressive strength of 25 PSI. It has a formulation resulting in a GWP of less than 50. It has high water resistance and an R-value of 5.0 per inch of thickness. It is available in a square edge board, ship-lap edge board or score-board depending on product type.



Features and Benefits

- Designed for high-load applications requiring insulation with minimum compressive strengths of 25 PSI
- Available as Type IV (25 PSI), Type IV (30 PSI), Type VI (40 PSI) and Type VII (60 PSI)
- R-value of 5.0 per inch of thickness
- Blowing agent blend with GWP of less than 50
- Excellent for high load floor systems in cold-storage environments
- Water resistance makes it an excellent choice for foundation and below-slab use

Product Data

Category	Property	Test Method	Value			
General	Thickness, Inch		2, 3, 4	2, 3	2, 3, 4	2, 3, 4
	Thickness, Millimeter		50.8, 76.2, 101.6	50.8, 76.2	50.8, 76.2, 101.6	50.8, 76.2, 101.6
	Property Type	ASTM C578	IV	IV	VI	VII
	Compressive Strength Min. (psi)	ASTM D1621 (at 10% deflection)	25 psi	30 psi	40 psi	60 psi
	Compressive Strength Min. (kPa)	ASTM D1621 (at 10% deflection)	172 kPa	206 kPa	275 kPa	413 kPa
	Water Absorption, Max. (% by volume)	ASTM C272	0.3	0.3	0.3	0.3
	Water Vapor Permeance ² (perm)	ASTM E967 (Dessicant Method)	1.5	1.5	1.1	1.1
	Density, Min. (pcf)	ASTM C303	1.5	1.5	1.8	2.2
	Service Temperature Max (°F)		165	165	165	165
Thermal	Thermal Resistance, R-value ¹ (°F-ft ² -hr/BTU per in thick)	ASTM C518 (at 75°F Mean)	5	5	5	5
	Thermal Conductivity, K-value ¹ (BTU/°F-ft ² -hr at 1")	ASTM C518 (at 75°F Mean)	0.2	0.2	0.2	0.2
Fire and Smoke	Flame Spread ³	ASTM E84/UL 723	25	25	25	25
	Smoke Developed ³	ASTM E84/UL 723	140	140	140	140

1. R-Values listed are in accordance with the testing requirements of ASTM C578 and are based on 1" aged product at 75° F Mean temperature.

2. Permeance shown is for 1" thick board. Permeance typically decreases as board thickness increases.

3. These numerical flame spread and smoke developed ratings are not intended to reflect hazards presented by this material under actual fire conditions. All applicable building codes must be followed.



Vision Packages & IMPpro



BIM & Design Services

Our Customer First mentality means our team is available to assist you every step of the way, from design calculations through to the estimating and sales process. Go to awipanel.com/contact to get started with your sales representative today.

Glimpse3D

Use our Glimpse3D Viewer to see our construction details like never before. Get a great visualization of standard finishes by selecting colors for roof and wall panels. Our convenient tool allows you to “Explode” and “Assemble” all of the various components in the detail and investigate each individual object up close. With the ability to hide or make components translucent, our easy-to-use interface provides understanding of how the components fit together.

BIM Configurator

Our BIM Configurator lets you design, configure and download BIM objects from All Weather Insulated Panels in more than 140 different formats including Revit, ArchiCAD and Tekla, as well as 2D drawings and PDF datasheets.

BIM Bundle

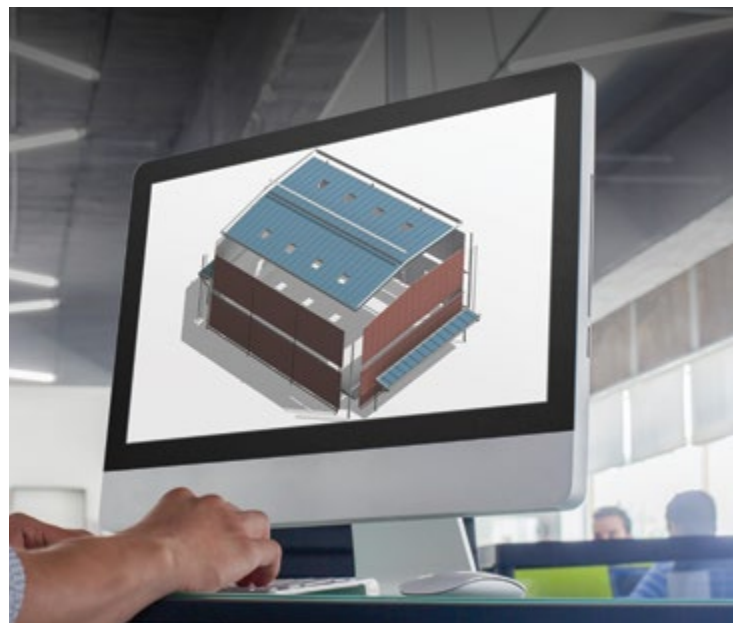
From insulated roof and wall panels to insulated decks, the BIM Bundle puts together a package specific to your project needs. Simply indicate your requirements, and a custom BIM Bundle will be sent to you from our digital team. With global Revit prowess and great direct product knowledge, our internal team creates and manages all the Revit project files with multiple levels of detail and materials to ensure our products meet the demanding requirements of your project.



Scan to access
Glimpse3D



Scan to access
our BIM tools



Vision Packages & IMPpro™

Vision Packages are conceptual illustrations and project renderings designed to provide a general sense of what our products and designs could contribute to your project. These visuals are intended to inspire and guide collaboration, but please note they do not represent final designs, materials, colors, or specific details. Rather, they offer a preview of the potential outcomes and scope that can be achieved.



All Weather Insulated Panels is proud to introduce IMPpro, an authorized installer program designed to equip professionals with the expertise needed to install our insulated metal panels (IMPs). Led by our experienced field services manager, this hands-on program is offered at dedicated training spaces in our three facilities. Upon completion, participants receive a five-year credential. The training covers wall panels, roof panels, and OneDek roof deck systems, providing invaluable experience that enhances your professional qualifications.

IMPpro Program Tiers			
Silver	Gold	Platinum	President's Club

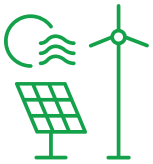


Sustainability & Continuing Ed

We Are Planet Passionate

At All Weather Insulated Panels, we are genuinely committed to our planet and making an impact on future generations. We design products that improve the efficiency of buildings, strive for net zero carbon manufacturing, are active in community activities that positively impact the environment and serve as a Green Business Certification Inc. (GBCI) education provider.

Our 2030 Global Commitments



ENERGY

- 60% direct renewable energy by 2030
- 20% on-site renewable energy generation by 2030
- Install solar PV systems on all owned facilities by 2030



CARBON

- Net zero carbon manufacturing by 2030
- 50% reduction in product CO₂ intensity from our primary supply partners by 2030
- Zero emission company cars by 2025



CIRCULARITY

- 1 billion PET bottles upcycled into our manufacturing processes by 2025
- Zero company waste to landfill by 2030



WATER

- 26 million gallons of rainwater harvested annually by 2030
- 5 active ocean clean-up projects by 2025

LEED Credits

Using All Weather Insulated Panels can contribute to LEED version 4.1 credits in the following categories:



Material and Resources



Sustainable Sites



Indoor Environment



Energy and Atmosphere



Innovation



Our Product Approach

As your manufacturing partner, All Weather Insulated Panels works to deliver the innovative products and services your projects demand. Our core values of trust, transparency and communication are founded in testing and compliance.

We rigorously test and certify all our products through independent, third-party laboratories to meet or exceed building code requirements. We strive for adherence to ISO 37301, "Compliance management systems." Furthermore, our compliance process requires multiple stages of signoff before publication for accuracy and clarity. Each of our manufacturing facilities are ISO 9001, Quality Management Systems certified, helping create products that meet the performance you expect.

We support continuous improvement regarding product transparency. AWIP is working to improve the embodied carbon and Global Warming Potential (GWP) of our product-specific Environmental Product Declarations (EPDs). Our goal is to build awareness around the environmental impact of building products while identifying ways to improve our impact. We've designed our approach toward transparency to create dialogue about our products and processes. **Your vision. Our purpose.** is more than a tagline. It is our commitment to partnership and to open collaboration for continuous product improvement.



Continuing Education



All Weather Insulated Panels is a registered provider with The American Institute of Architects (AIA) Continuing Education System and Green Building Certification Institute (GBCI) Education Provider. Depending on the continuing education (CE) course, you can receive one AIA and/or one GBCI CE credit and potentially qualify for several other certifications.

All Weather Insulated Panels CE courses are available for presentation in lunch and learn settings, in person or virtually. In addition to the courses listed below, ask how you can receive CE credits during a plant tour at one of our facilities. To schedule a lunch and learn, please contact your local sales representative, or go to awipanel.com/contact

Available Courses

- Sustainability Impact of High-Performance Insulated Metal Wall and Roof Systems (1-Hour Course)
- Insulated Metal Panels: Uniting Energy Efficiency with Design Versatility (1-Hour Course)
- Insulated Roof Decks (1-Hour Course)



Scan for the most current product information

SHERWIN-WILLIAMS®
Coil Coatings

Sherwin-Williams® trademark of SWIMC LLC.

In accordance with ongoing efforts to improve our products and their performance, All Weather Insulated Panels reserves the right to change without notice the specifications contained herein. The contents herein are for general information and illustrative purposes only and are not intended to serve as any type of advice. Every effort is made to ensure the accuracy of the information included in this brochure and it is believed that the information contained herein is accurate and reliable as of the date of this publication. All Weather Insulated Panels does not warrant or represent the accuracy or reliability of any information included in this collateral. Any reliance of any information without consultation with All Weather Insulated Panels or a duly authorized representative shall be at the user's own risk. Copyright 2025 All Weather Insulated Panels—All rights reserved.

AWIP|002|01/23/2025



All Weather
Insulated Panels

1 (888) 970-AWIP (2947)
awipanel.com
sales@awipanel.com

