

NOTE: 1/4" - 14 x 0.88" HWH DP1  
AT HIGH RIBS & SEALANTS  
NOT SHOWN FOR CLARITY.

"SW-02" SADDLE WASHER W/O  
NEOPRENE GASKET W/  
1/4" - 14 x " HWH DP3 W/  
WASHER SPACED 10" O/C  
(PILOT HOLE RECOMMENDED)

WALL INSTALLATION DIRECTION →

## HR5-W WALL PANEL INSTALLATION

(PLAN VIEW)

DETAIL:

### HR5-W WALL PANEL INSTALLATION

APPLICATION:

HR WALL, COMMERCIAL & INDUSTRIAL

AWIP DETAIL NUMBER:

HRW-ACI-FS-001

DATE:

01/31/24

DRAWN BY:

MMF

SHEET:

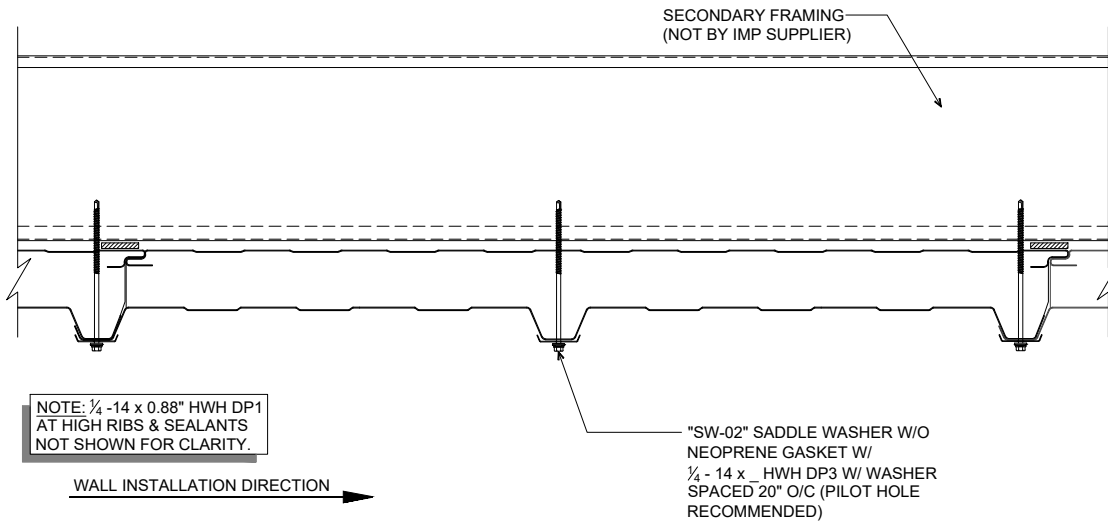
1

OF

1

929 ALDRIDGE ROAD  
VACAVILLE, CA 95688  
TEL: (707) 359-2280  
FAX: (707) 359-2286  
WWW.AWIPANELS.COM





## HR3-W WALL PANEL INSTALLATION

(PLAN VIEW)

DETAIL:

### HR3-W WALL PANEL INSTALLATION

APPLICATION:

HR WALL, COMMERCIAL & INDUSTRIAL

AWIP DETAIL NUMBER:

HRW-ACI-FS-002

DATE:

01/31/24

DRAWN BY:

MMF

SHEET:

1

OF

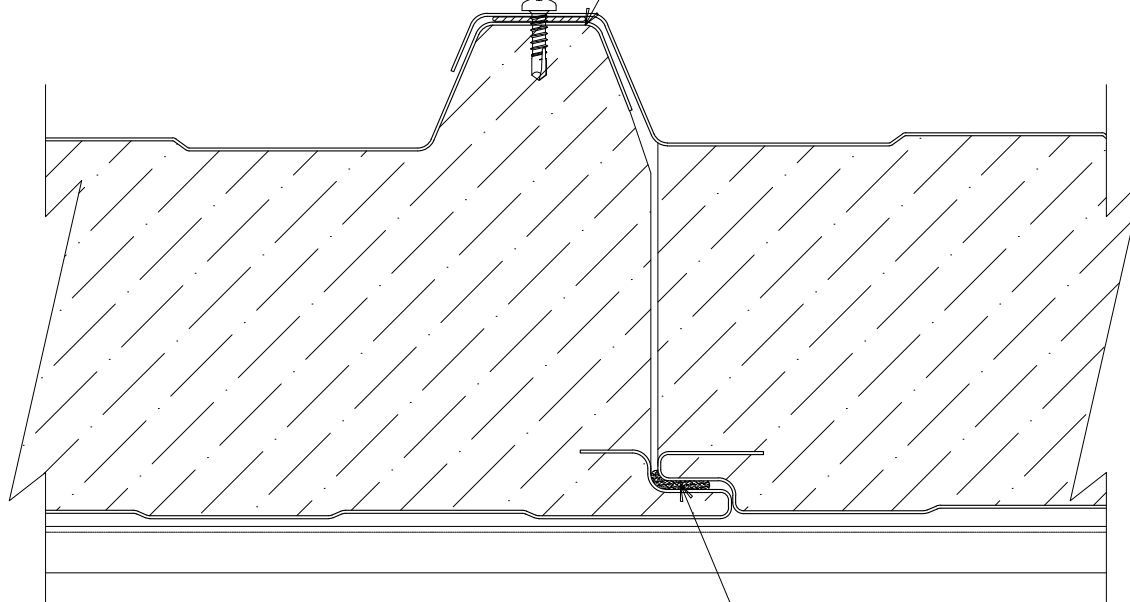
1

929 ALDRIDGE ROAD  
VACAVILLE, CA 95688  
TEL: (707) 359-2280  
FAX: (707) 359-2286  
WWW.AWIPANELS.COM



10. x 0.75" PPH DP3 AT  
8" ON CENTER

$\frac{3}{4}$ " x  $\frac{3}{32}$ " BUTYL TAPE SEALANT



FIELD-APPLIED CONTINUOUS  
 $\frac{3}{8}$ " DIAMETER BEAD (APPROXIMATE)  
OF NON-SKINNING BUTYL SEALANT

# HR5-W PANEL JOINT

(SECTION VIEW)

DETAIL:

## HR5-W PANEL JOINT

APPLICATION:

HR WALL, COMMERCIAL & INDUSTRIAL

AWIP DETAIL NUMBER:

HRW-ACI-P-001

929 ALDRIDGE ROAD  
VACAVILLE, CA 95688  
TEL: (707) 359-2280  
FAX: (707) 359-2286  
WWW.AWIPANELS.COM

**All Weather**  
Insulated Panels



SHEET:

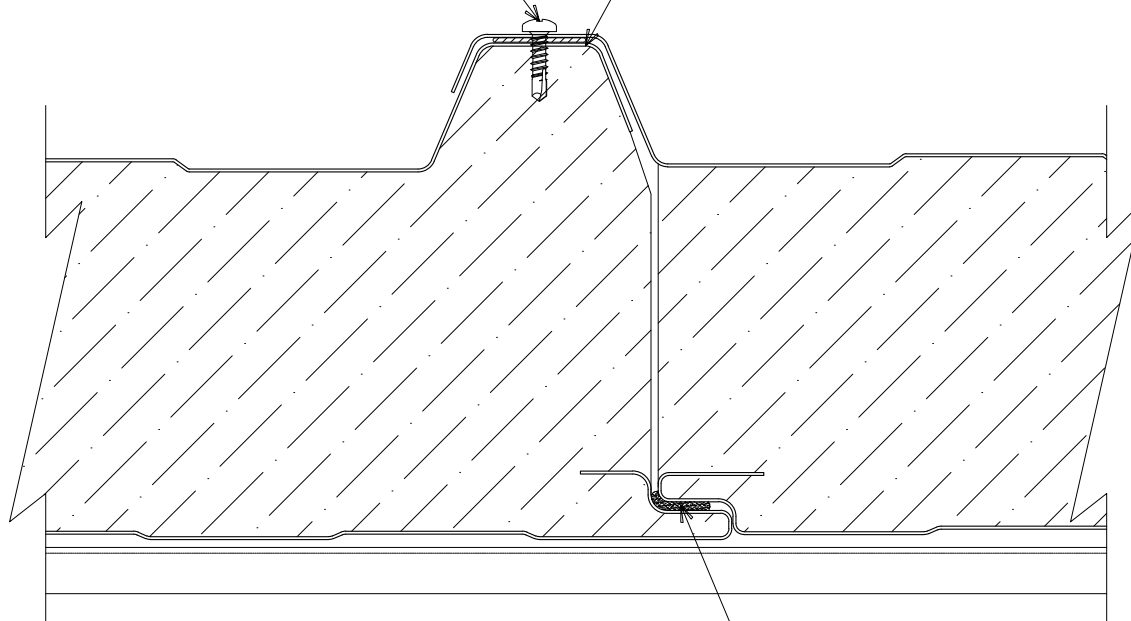
DATE:  
01/31/24

DRAWN BY:  
MMF

1 OF 1

10. x 0.75" PPH DP3 AT  
8" ON CENTER

$\frac{3}{4}$ " x  $\frac{3}{32}$ " BUTYL TAPE SEALANT



FIELD-APPLIED CONTINUOUS  
 $\frac{3}{8}$ " DIAMETER BEAD (APPROXIMATE)  
OF NON-SKINNING BUTYL SEALANT

# HR3-W PANEL JOINT

(PLAN VIEW)

DETAIL:

## HR3-W PANEL JOINT

APPLICATION:

HR WALL, COMMERCIAL & INDUSTRIAL

AWIP DETAIL NUMBER:

HRW-ACI-P-002

929 ALDRIDGE ROAD  
VACAVILLE, CA 95688  
TEL: (707) 359-2280  
FAX: (707) 359-2286  
WWW.AWIPANELS.COM

**All Weather**  
Insulated Panels



SHEET:

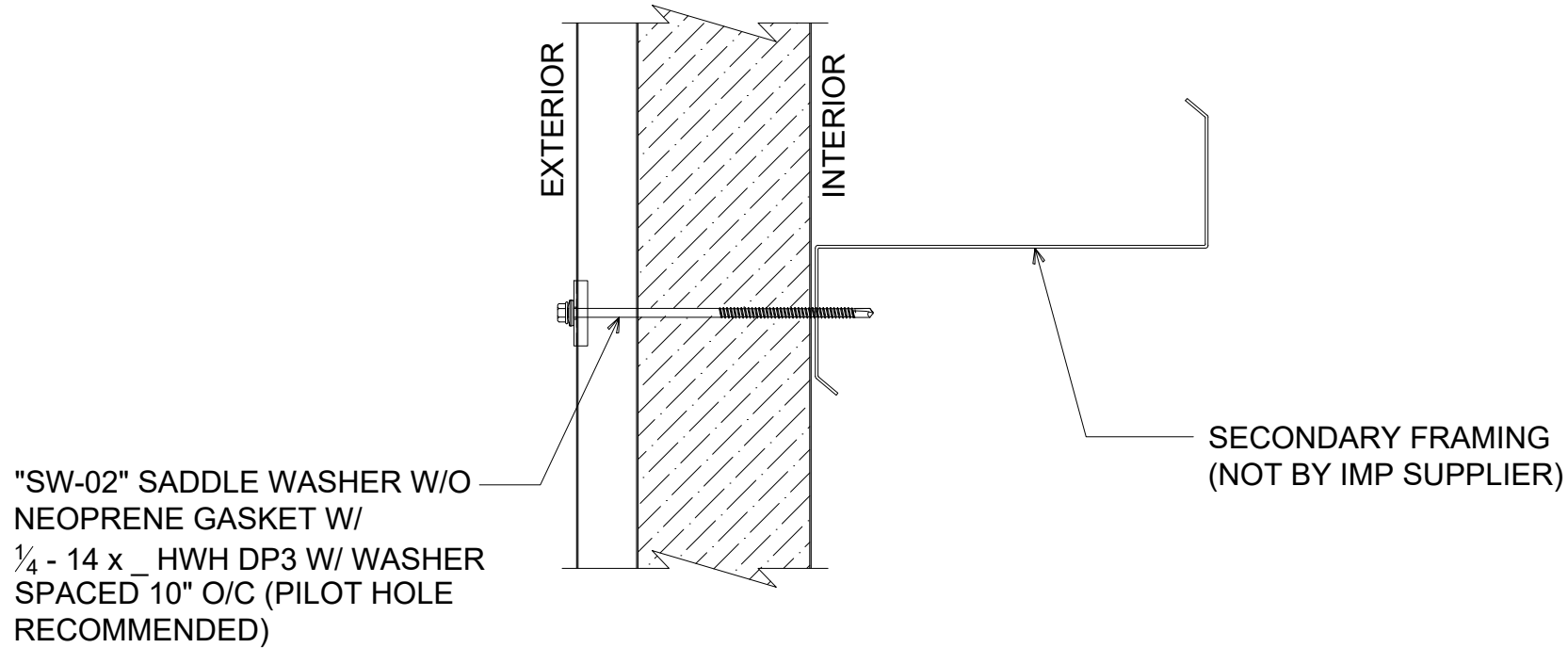
DATE:  
01/31/24

DRAWN BY:  
MMF

1 OF 1

NOTE: FASTENING SCHEDULE  
MAY VARY DEPENDING ON  
SPECIFIC APPLICATION.

NOTE: INSTALL OUTSIDE / EDGE  
FASTENERS THEN INSTALL  
INSIDE / CENTER FASTENER.



# HR5-W INTERMEDIATE WALL SUPPORT

(SECTION VIEW)

DETAIL:

## HR5-W INTERMEDIATE WALL SUPPORT

APPLICATION:  
HR WALL, COMMERCIAL & INDUSTRIAL  
AWIP DETAIL NUMBER:  
HRW-ACI-IW-001

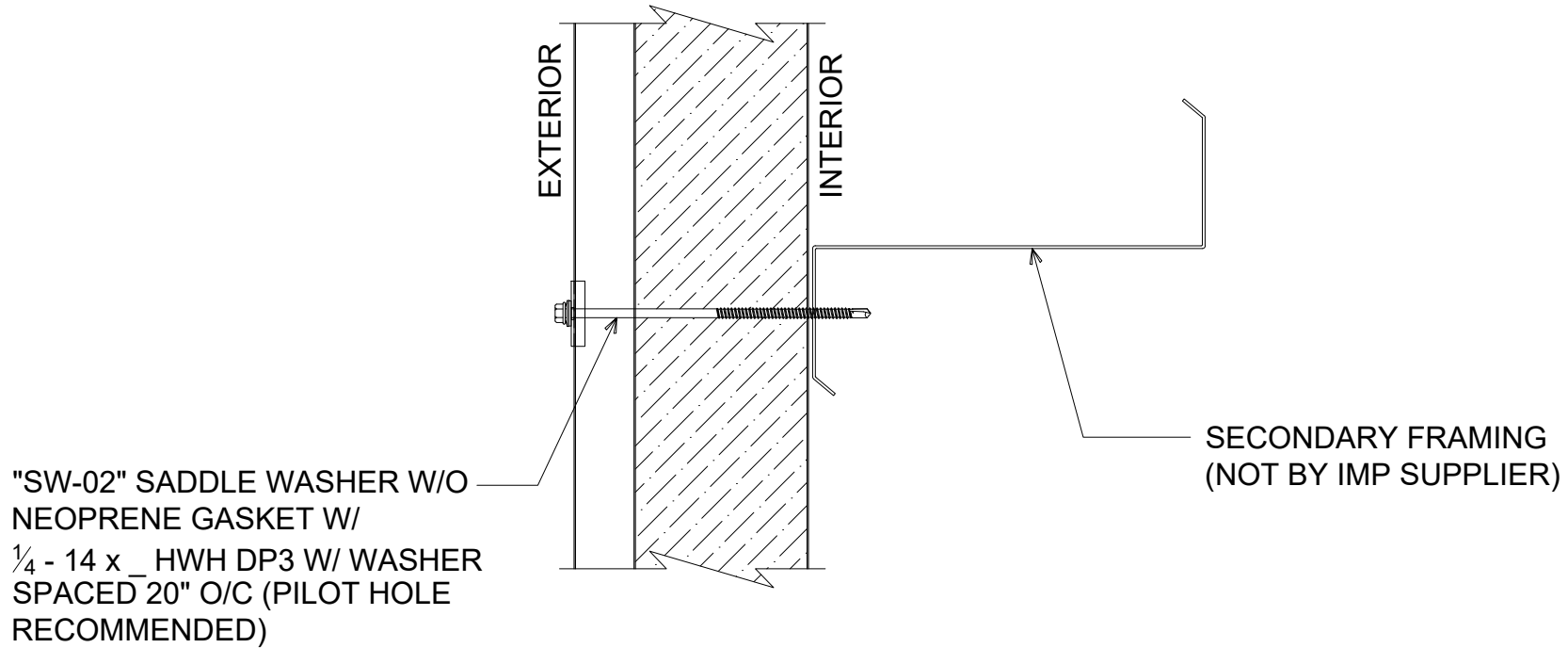
DATE:  
01/31/24  
DRAWN BY:  
MMF

SHEET:  
1 OF 1

929 ALDRIDGE ROAD  
VACAVILLE, CA 95688  
TEL: (707) 359-2280  
FAX: (707) 359-2286  
WWW.AWIPANELS.COM



NOTE: FASTENING SCHEDULE  
MAY VARY DEPENDING ON  
SPECIFIC APPLICATION.



# HR3-W INTERMEDIATE WALL SUPPORT

(SECTION VIEW)

DETAIL: HR3-W INTERMEDIATE WALL SUPPORT

APPLICATION:  
HR WALL, COMMERCIAL & INDUSTRIAL  
AWIP DETAIL NUMBER:  
HRW-ACI-IW-002

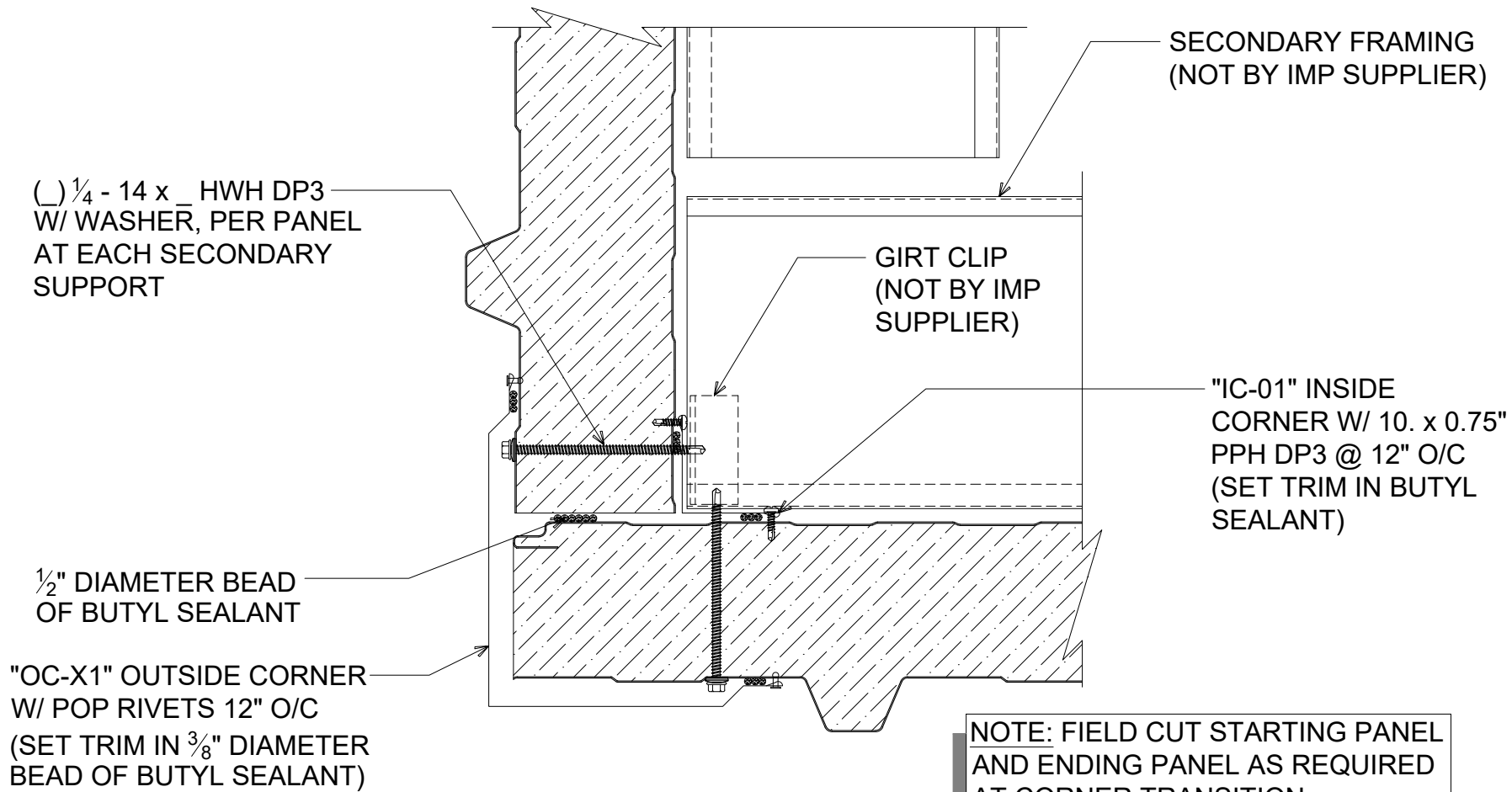
DATE:  
01/31/24  
DRAWN BY:  
MMF

SHEET:  
1 OF 1

929 ALDRIDGE ROAD  
VACAVILLE, CA 95688  
TEL: (707) 359-2280  
FAX: (707) 359-2286  
WWW.AWIPANELS.COM

**All Weather**  
Insulated Panels





# # SCULPTED CORNER TRANSITION

(PLAN VIEW)

DETAIL:

SCULPTED CORNER TRANSITION

APPLICATION:

HR WALL, COMMERCIAL & INDUSTRIAL

AWIP DETAIL NUMBER:

HRW-ACL-CT-001

DATE:

01/31/24

DRAWN BY:

MMF

SHEET:

1

OF

1

929 ALDRIDGE ROAD  
VACAVILLE, CA 95688  
TEL: (707) 359-2280  
FAX: (707) 359-2286  
WWW.AWIPANELS.COM

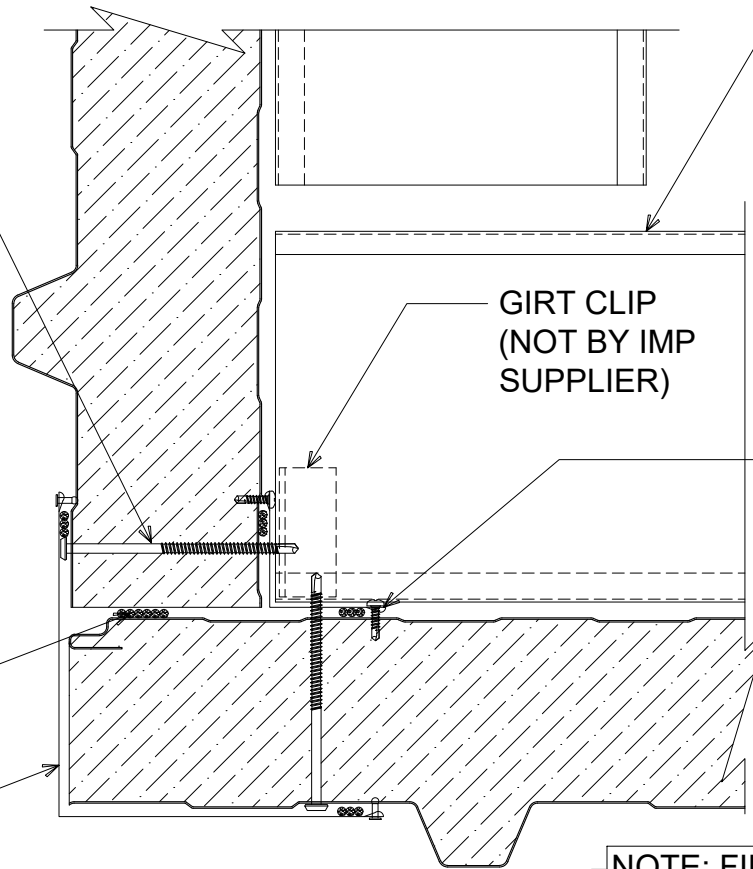
**All Weather**  
Insulated Panels



( ) 1/4 - 14 x \_ BVL DP3, PER  
PANEL AT EACH SECONDARY  
SUPPORT

1/2" DIAMETER BEAD  
OF BUTYL SEALANT

"OC-03" OUTSIDE CORNER  
W/ POP RIVETS 12" O/C  
(SET TRIM IN 3/8" DIAMETER  
BEAD OF BUTYL SEALANT)



SECONDARY FRAMING  
(NOT BY IMP SUPPLIER)

GIRT CLIP  
(NOT BY IMP  
SUPPLIER)

"IC-01" INSIDE  
CORNER W/ 10. x 0.75"  
PPH DP3 @ 12" O/C  
(SET TRIM IN BUTYL  
SEALANT)

NOTE: FIELD CUT STARTING PANEL  
AND ENDING PANEL AS REQUIRED  
AT CORNER TRANSITION.

# # FLAT CORNER TRANSITION

(PLAN VIEW)

DETAIL:

FLAT CORNER TRANSITION

APPLICATION:  
HR WALL, COMMERCIAL & INDUSTRIAL  
AWIP DETAIL NUMBER:

929 ALDRIDGE ROAD  
VACAVILLE, CA 95688  
TEL: (707) 359-2280  
FAX: (707) 359-2286  
WWW.AWIPANELS.COM

**All Weather**  
Insulated Panels



DATE:

01/31/24

SHEET:

DRAWN BY:

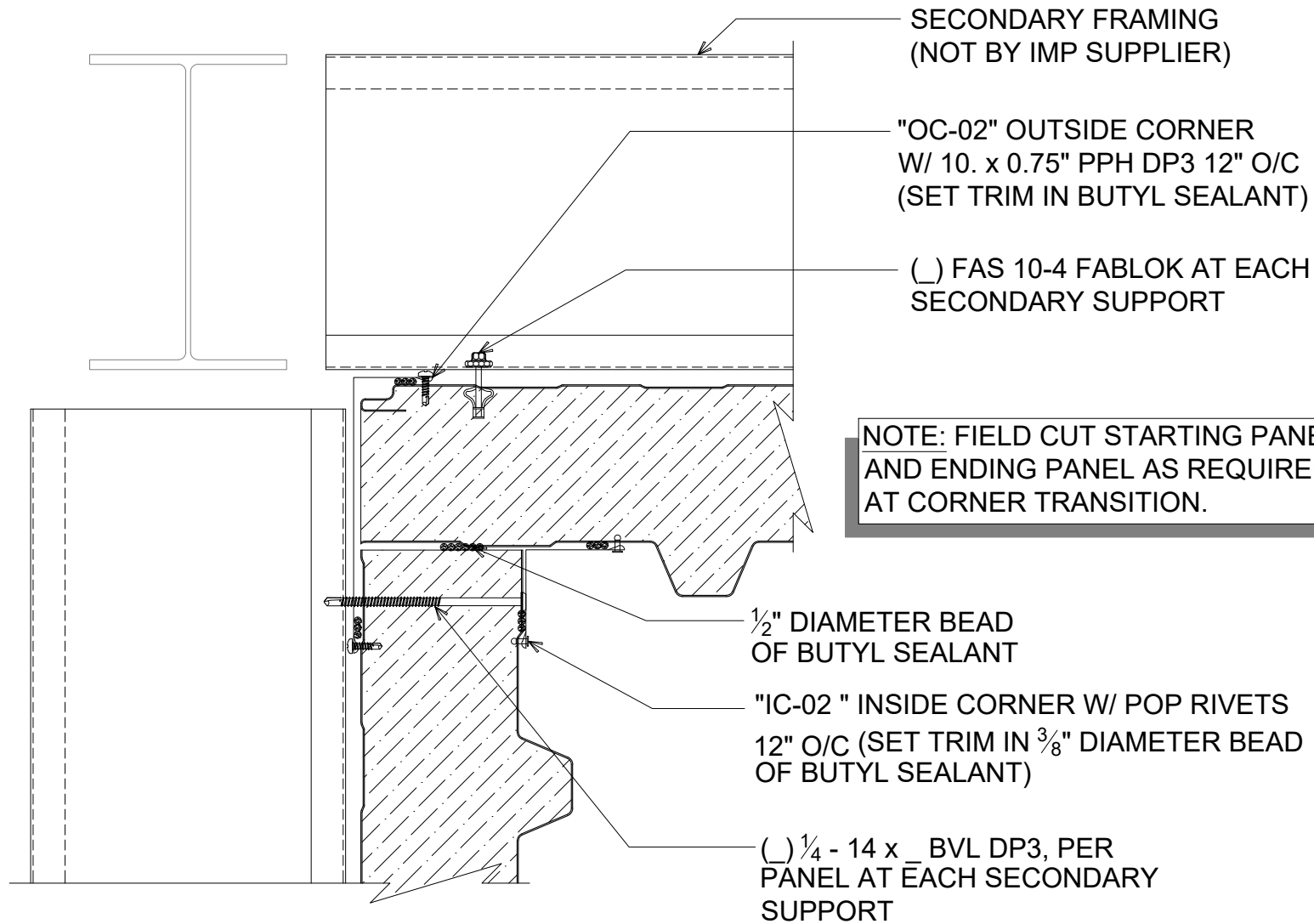
MMF

1

OF

1





# # FLAT INSIDE CORNER

(PLAN VIEW)

DETAIL:

## FLAT INSIDE CORNER

APPLICATION:

HR WALL, COMMERCIAL & INDUSTRIAL

AWIP DETAIL NUMBER:

HRW-ACL-CT-003

929 ALDRIDGE ROAD  
VACAVILLE, CA 95688  
TEL: (707) 359-2280  
FAX: (707) 359-2286  
WWW.AWIPANELS.COM



**All Weather**  
Insulated Panels

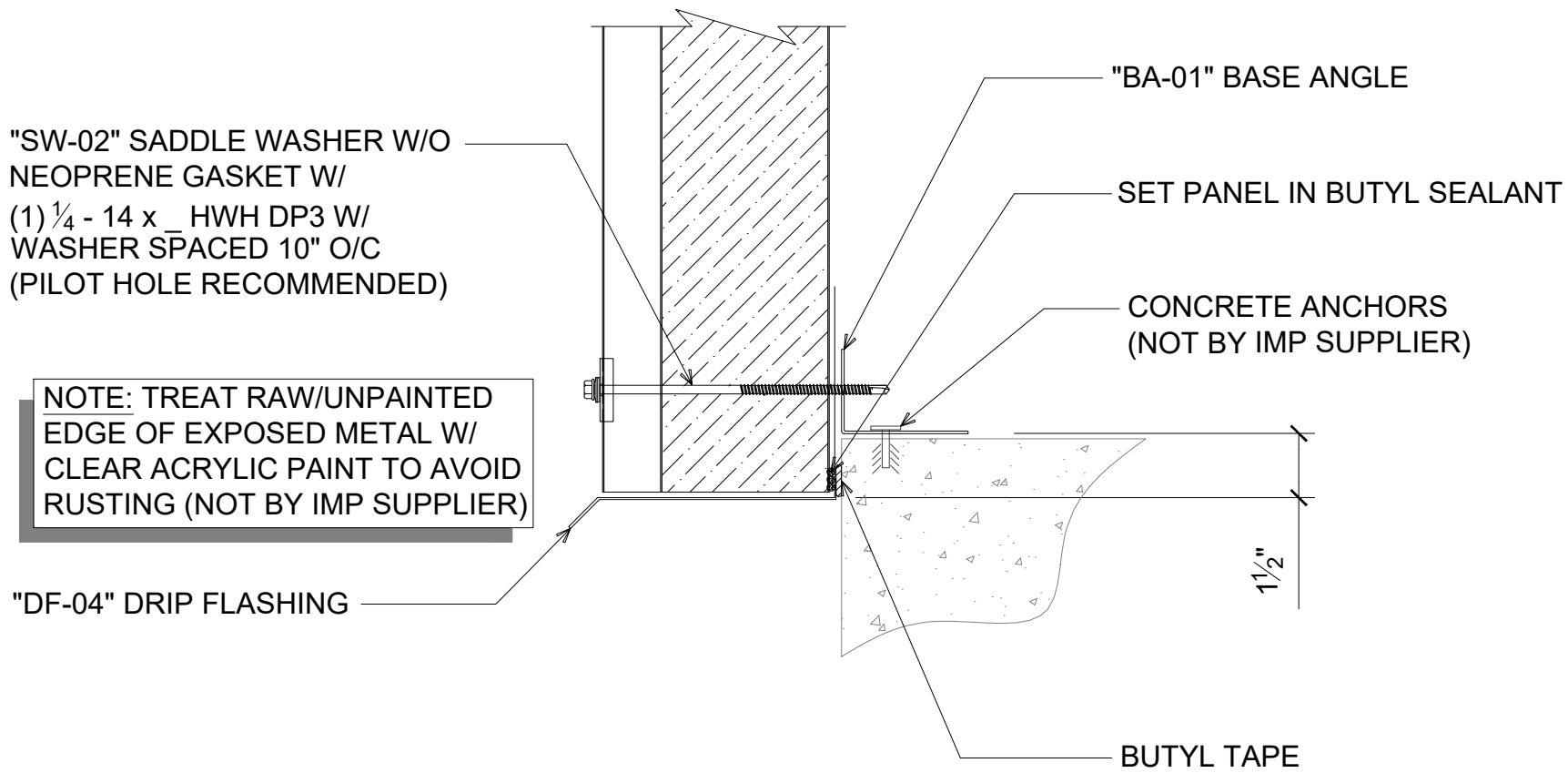


SHEET:

DATE:  
01/31/24

DRAWN BY:  
MMF

1 OF 1



NOTE: TREAT RAW/UNPAINTED  
EDGE OF EXPOSED METAL W/  
CLEAR ACRYLIC PAINT TO AVOID  
RUSTING (NOT BY IMP SUPPLIER)

# # BYPASS BASE (HR5-W)

(SECTION VIEW)

DETAIL:	DATE: 01/31/24		SHEET: 1
	APPLICATION: HR WALL, COMMERCIAL & INDUSTRIAL		OF 1
	AWIP DETAIL NUMBER: HRW-ACL-BC-001		

929 ALDRIDGE ROAD  
VACAVILLE, CA 95688  
TEL: (707) 359-2280  
FAX: (707) 359-2286  
WWW.AWIPANELS.COM



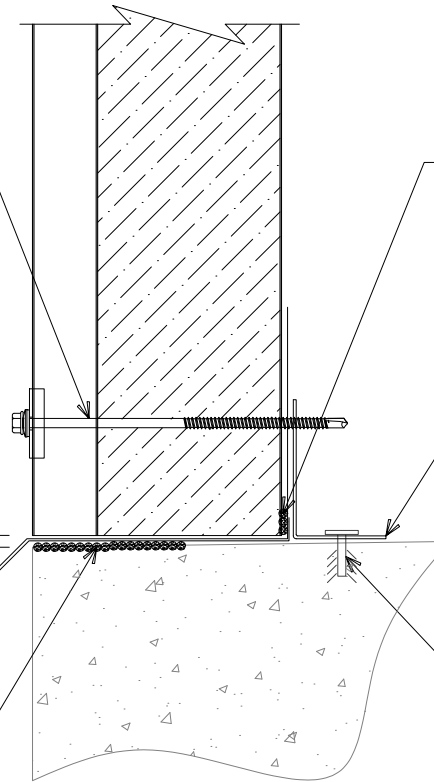

"SW-02" SADDLE WASHER W/O  
NEOPRENE GASKET W/  
(1) 1/4 - 14 x \_ HWH DP3 W/  
WASHER SPACED 10" O/C  
(PILOT HOLE RECOMMENDED)

NOTE: TREAT RAW/UNPAINTED  
EDGE OF EXPOSED METAL W/  
CLEAR ACRYLIC PAINT TO AVOID  
RUSTING (NOT BY IMP SUPPLIER)

1/4"

"DF-04" DRIP FLASHING  
(FIELD-SLOPE TO DRAIN)

SET BASE FLASHING  
IN BUTYL SEALANT



SET PANEL IN BUTYL  
SEALANT

"BA-01" BASE ANGLE

CONCRETE ANCHORS  
(NOT BY IMP SUPPLIER)

# # FLUSH / FINISH FLOOR BASE (HR5-W)

(SECTION VIEW)

DETAIL:  
**FLUSH/FINISH FLOOR BASE (HR5-W)**

APPLICATION:  
HR WALL, COMMERCIAL & INDUSTRIAL  
AWIP DETAIL NUMBER:  
HRW-ACL-BC-002

929 ALDRIDGE ROAD  
VACAVILLE, CA 95688  
TEL: (707) 359-2280  
FAX: (707) 359-2286  
WWW.AWIPANELS.COM

**All Weather**  
Insulated Panels

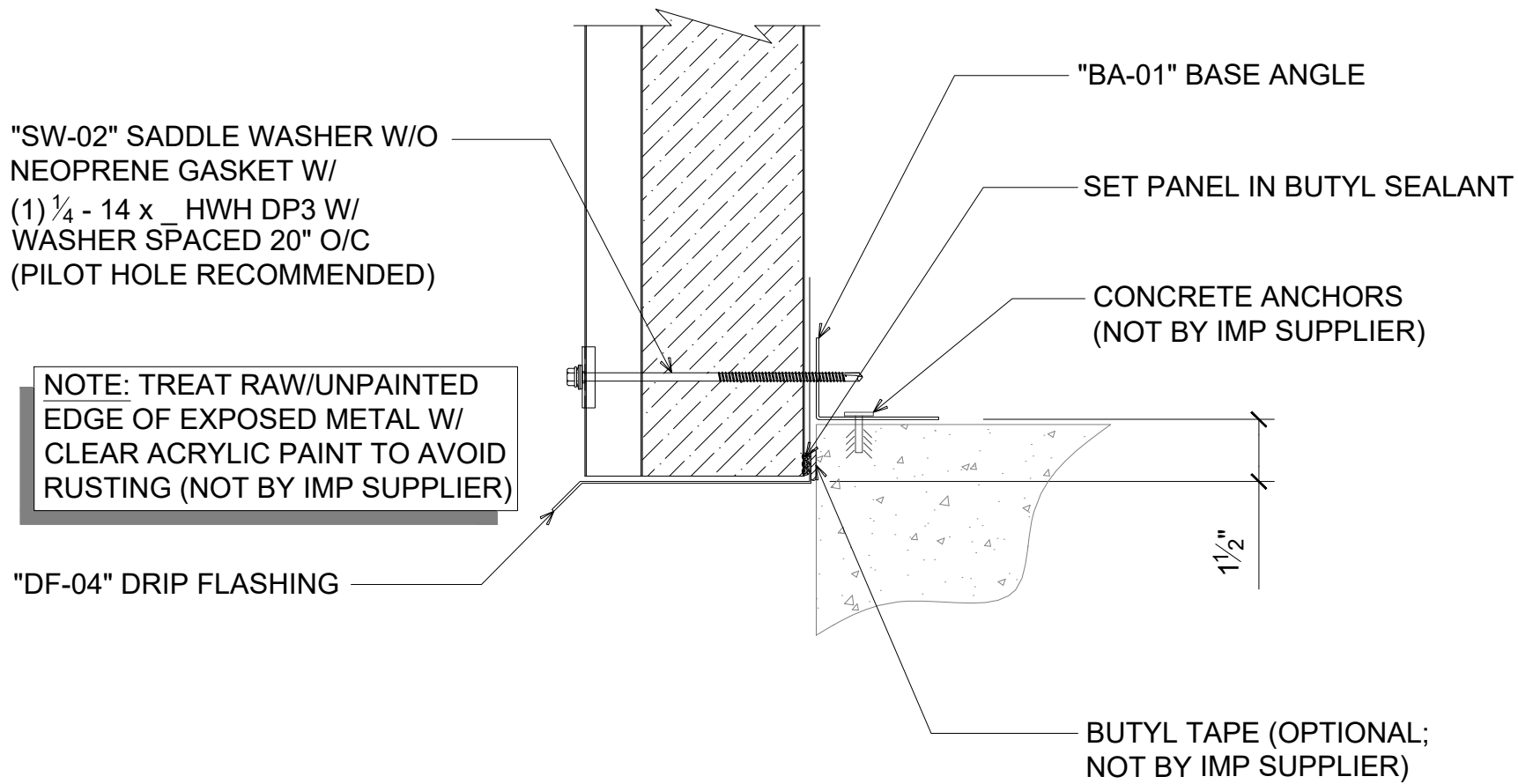


SHEET:

DATE:  
01/31/24

DRAWN BY:  
MMF

1 OF 1



NOTE: TREAT RAW/UNPAINTED  
EDGE OF EXPOSED METAL W/  
CLEAR ACRYLIC PAINT TO AVOID  
RUSTING (NOT BY IMP SUPPLIER)

# # BYPASS BASE (HR3-W)

(SECTION VIEW)

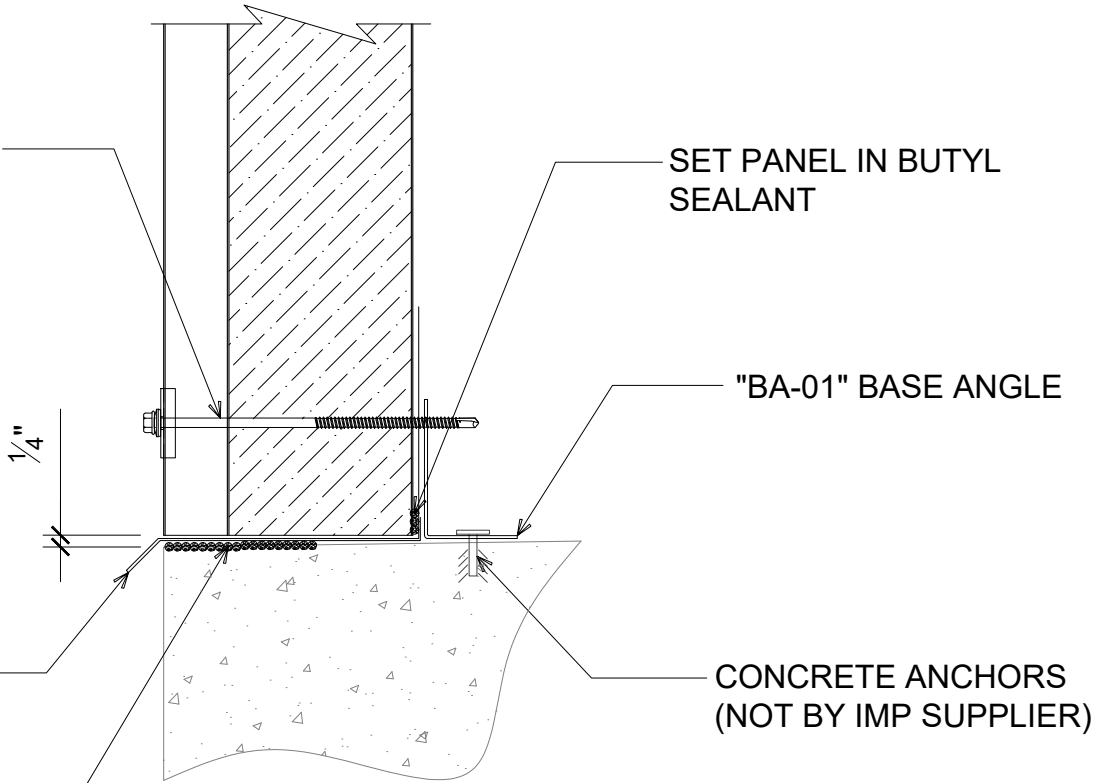
DETAIL:	DATE: 01/31/24		SHEET: 1
	APPLICATION: HR WALL, COMMERCIAL & INDUSTRIAL		OF 1
BYPASS BASE (HR3-W)		DRAWN BY: MMF	
AWIP DETAIL NUMBER: HRW-ACL-BC-003			

929 ALDRIDGE ROAD  
VACAVILLE, CA 95688  
TEL: (707) 359-2280  
FAX: (707) 359-2286  
WWW.AWIPANELS.COM

**All Weather**  
Insulated Panels

"SW-02" SADDLE WASHER W/O  
NEOPRENE GASKET W/  
(1) 1/4 - 14 x \_ HWH DP3 W/  
WASHER SPACED 20" O/C  
(PILOT HOLE RECOMMENDED)

NOTE: TREAT RAW/UNPAINTED  
EDGE OF EXPOSED METAL W/  
CLEAR ACRYLIC PAINT TO AVOID  
RUSTING (NOT BY IMP SUPPLIER)



"DF-04" DRIP FLASHING  
(FIELD-SLOPE TO DRAIN)

SET BASE FLASHING  
IN BUTYL SEALANT

SET PANEL IN BUTYL  
SEALANT

"BA-01" BASE ANGLE

CONCRETE ANCHORS  
(NOT BY IMP SUPPLIER)

#

# FLUSH / FINISH FLOOR BASE (HR3-W)

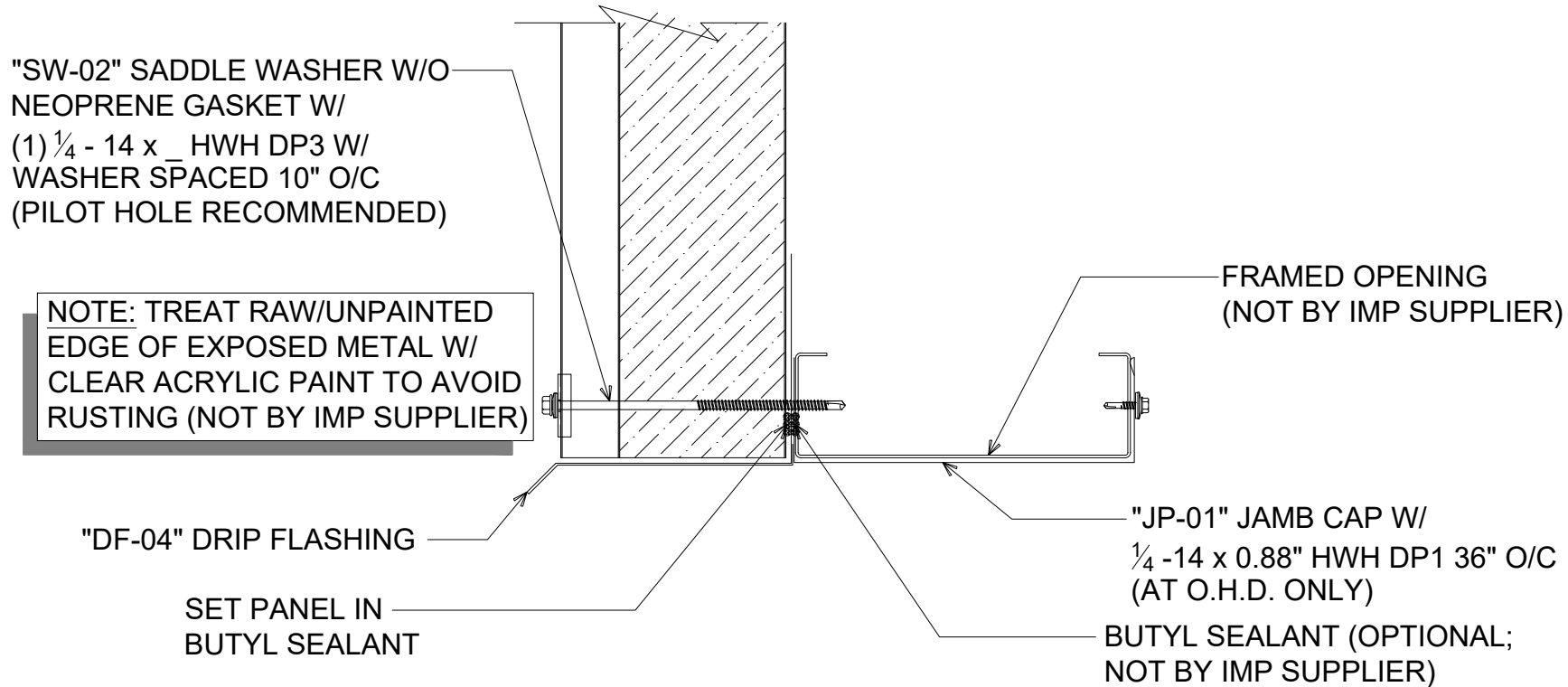
(SECTION VIEW)

DETAIL:	FLUSH/FINISH FLOOR BASE (HR3-W)		SHEET:
	DATE:	01/31/24	1
	DRAWN BY:	MMF	OF 1
APPLICATION:	HR WALL, COMMERCIAL & INDUSTRIAL		
AWIP DETAIL NUMBER:	HRW-ACL-BC-004		

929 ALDRIDGE ROAD  
VACAVILLE, CA 95688  
TEL: (707) 359-2280  
FAX: (707) 359-2286  
WWW.AWIPANELS.COM

**All Weather**  
Insulated Panels





# # FRAMED OPENING HEADER (HR5-W)

(SECTION VIEW)

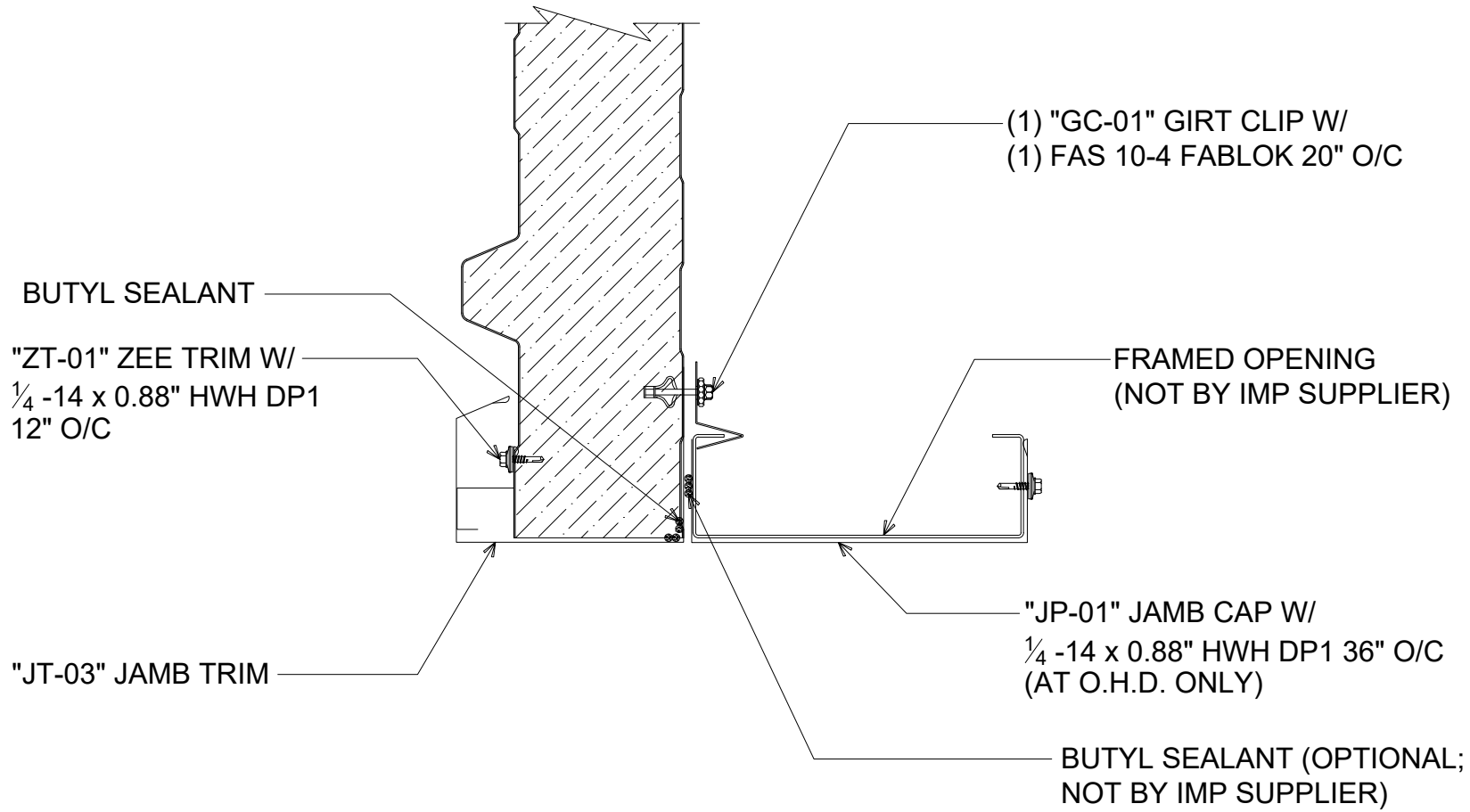
DETAIL: FRAMED OPENING HEADER (HR5-W)

DATE:	01/31/24	SHEET:	1	OF	1
DRAWN BY:	MMF				

APPLICATION:  
HR WALL, COMMERCIAL & INDUSTRIAL  
AWIP DETAIL NUMBER:  
HRW-ACI-FO-001

929 ALDRIDGE ROAD  
VACAVILLE, CA 95688  
TEL: (707) 359-2280  
FAX: (707) 359-2286  
WWW.AWIPANELS.COM





# # FRAMED OPENING JAMB

(PLAN VIEW )

DETAIL:

## FRAMED OPENING JAMB

APPLICATION:

HR WALL, COMMERCIAL & INDUSTRIAL

AWIP DETAIL NUMBER:

HRW-ACI-FO-002

DATE:

01/31/24

DRAWN BY:

MMF

SHEET:

1

OF 1

929 ALDRIDGE ROAD  
VACAVILLE, CA 95688  
TEL: (707) 359-2280  
FAX: (707) 359-2286  
WWW.AWIPANELS.COM

**All Weather**  
Insulated Panels



"SW-02" SADDLE WASHER W/O  
NEOPRENE GASKET W/  
(1) 1/4 - 14 x \_ HWH DP3 W/  
WASHER SPACED 20" O/C  
(PILOT HOLE RECOMMENDED)

NOTE: TREAT RAW/UNPAINTED  
EDGE OF EXPOSED METAL W/  
CLEAR ACRYLIC PAINT TO AVOID  
RUSTING (NOT BY IMP SUPPLIER)

"DF-04" DRIP FLASHING

SET PANEL IN  
BUTYL SEALANT

FRAMED OPENING  
(NOT BY IMP SUPPLIER)

"JT-01" JAMB TRIM W/ (2) 1/4 - 14 x  
0.88" HWH DP1 36" O/C (AT  
O.H.D. ONLY)

BUTYL SEALANT (OPTIONAL;  
NOT BY IMP SUPPLIER)

# # FRAMED OPENING HEADER (HR3-W)

(SECTION VIEW)

DETAIL:

FRAMED OPENING HEADER (HR3-W)

APPLICATION:

HR WALL, COMMERCIAL & INDUSTRIAL

AWIP DETAIL NUMBER:

HRW-ACI-FO-003

DATE:

01/31/24

DRAWN BY:

MMF

SHEET:

1

OF

1

929 ALDRIDGE ROAD  
VACAVILLE, CA 95688  
TEL: (707) 359-2280  
FAX: (707) 359-2286  
WWW.AWIPANELS.COM

**All Weather**  
Insulated Panels

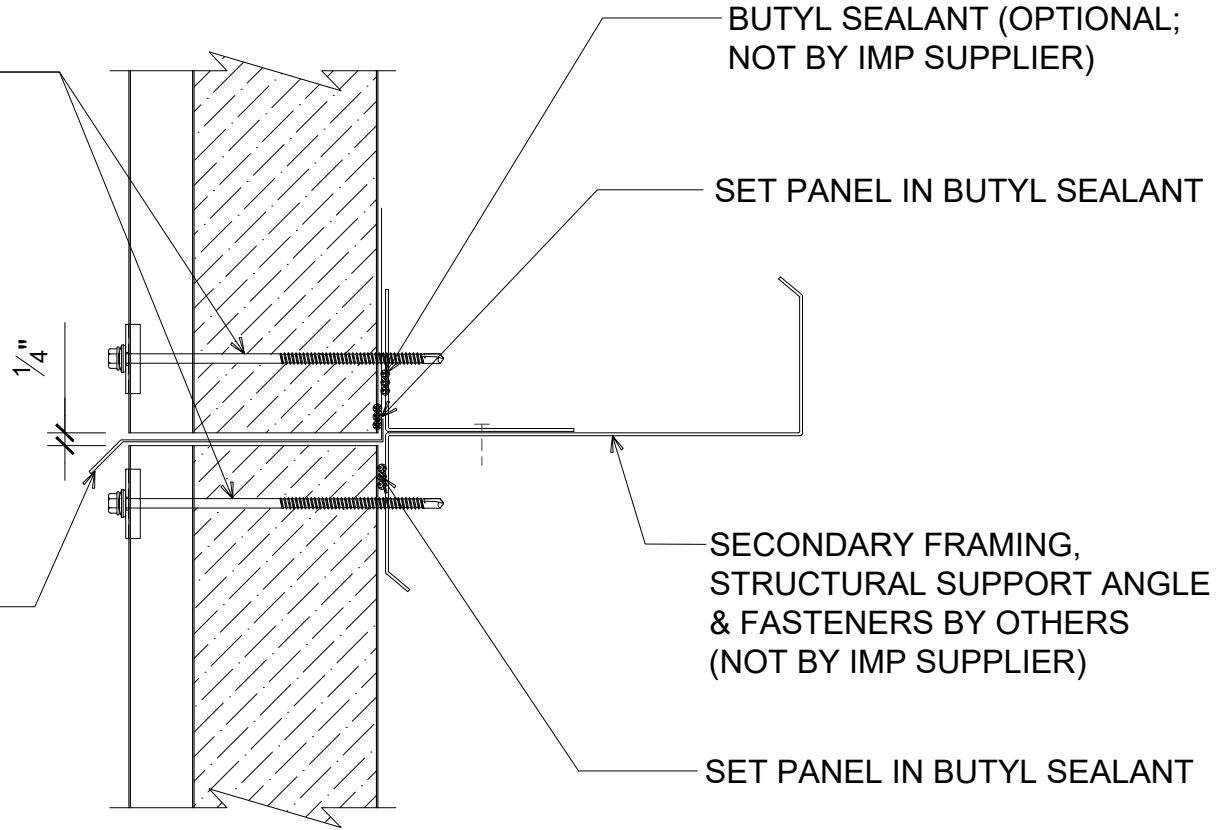




"SW-02" SADDLE WASHER W/O  
NEOPRENE GASKET W/  
(1) 1/4 - 14 x \_ HWH DP3 W/  
WASHER SPACED 10" O/C  
(PILOT HOLE RECOMMENDED)

NOTE: TREAT RAW/UNPAINTED  
EDGE OF EXPOSED METAL W/  
CLEAR ACRYLIC PAINT TO AVOID  
RUSTING (NOT BY IMP SUPPLIER)

"DF-04" DRIP FLASHING



BUTYL SEALANT (OPTIONAL;  
NOT BY IMP SUPPLIER)

SET PANEL IN BUTYL SEALANT

SECONDARY FRAMING,  
STRUCTURAL SUPPORT ANGLE  
& FASTENERS BY OTHERS  
(NOT BY IMP SUPPLIER)

SET PANEL IN BUTYL SEALANT

# # STACK JOINT (HR5-W)

(SECTION VIEW)

DETAIL:

**STACK JOINT (HR5-W)**

APPLICATION:

HR WALL, COMMERCIAL & INDUSTRIAL

AWIP DETAIL NUMBER:

HRW-ACI-SJ-001

DATE:

01/31/24

DRAWN BY:

MMF

SHEET:

1

OF

1

929 ALDRIDGE ROAD  
VACAVILLE, CA 95688  
TEL: (707) 359-2280  
FAX: (707) 359-2286  
WWW.AWIPANELS.COM

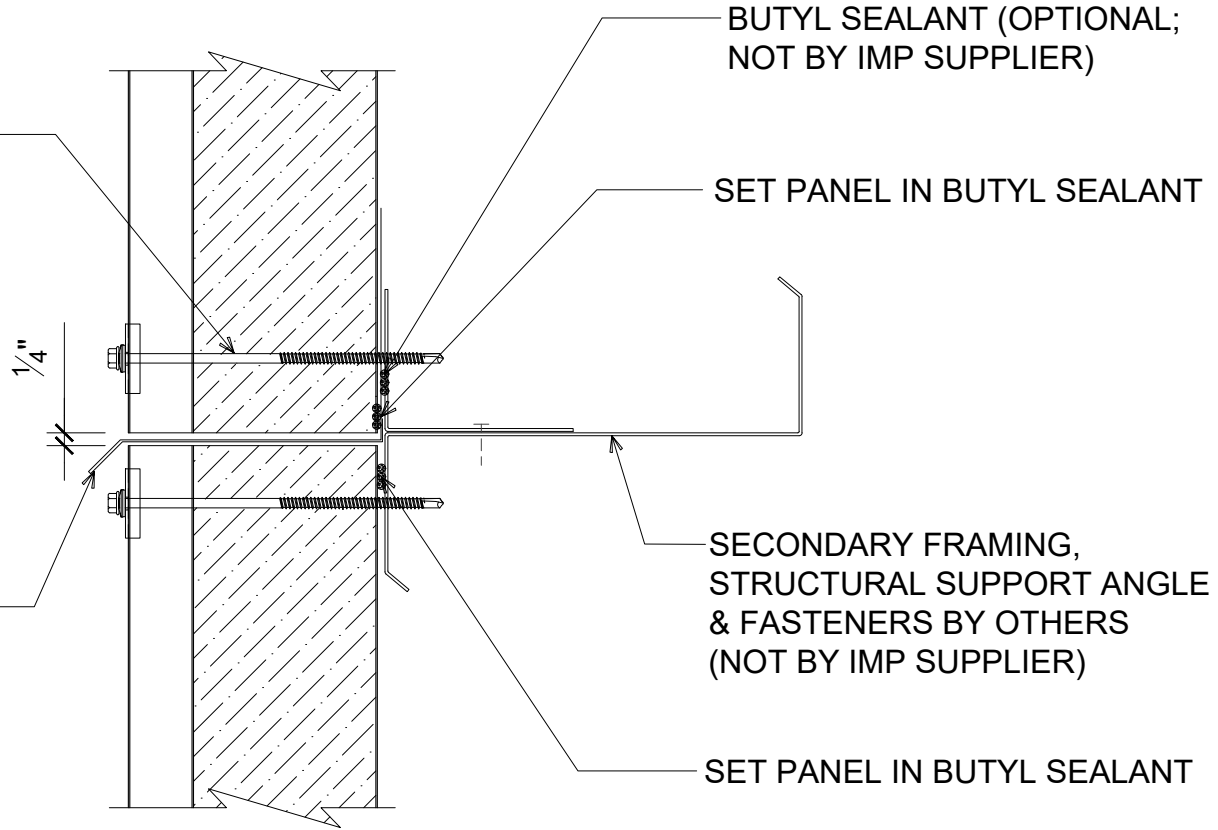
**All Weather**  
Insulated Panels



"SW-02" SADDLE WASHER W/O  
NEOPRENE GASKET W/  
(1) 1/4" - 14 x \_ HWH DP3 W/  
WASHER SPACED 20" O/C  
(PILOT HOLE RECOMMENDED)

NOTE: TREAT RAW/UNPAINTED  
EDGE OF EXPOSED METAL W/  
CLEAR ACRYLIC PAINT TO AVOID  
RUSTING (NOT BY IMP SUPPLIER)

"DF-04" DRIP FLASHING



# # STACK JOINT (HR3-W)

(SECTION VIEW)

DETAIL:	STACK JOINT (HR3-W)		SHEET:	1 OF 1
	APPLICATION:	HR WALL, COMMERCIAL & INDUSTRIAL	DATE:	01/31/24
	AWIP DETAIL NUMBER:	HRW-ACI-SJ-002	DRAWN BY:	MMF

929 ALDRIDGE ROAD  
VACAVILLE, CA 95688  
TEL: (707) 359-2280  
FAX: (707) 359-2286  
WWW.AWIPANELS.COM

**All Weather**  
Insulated Panels