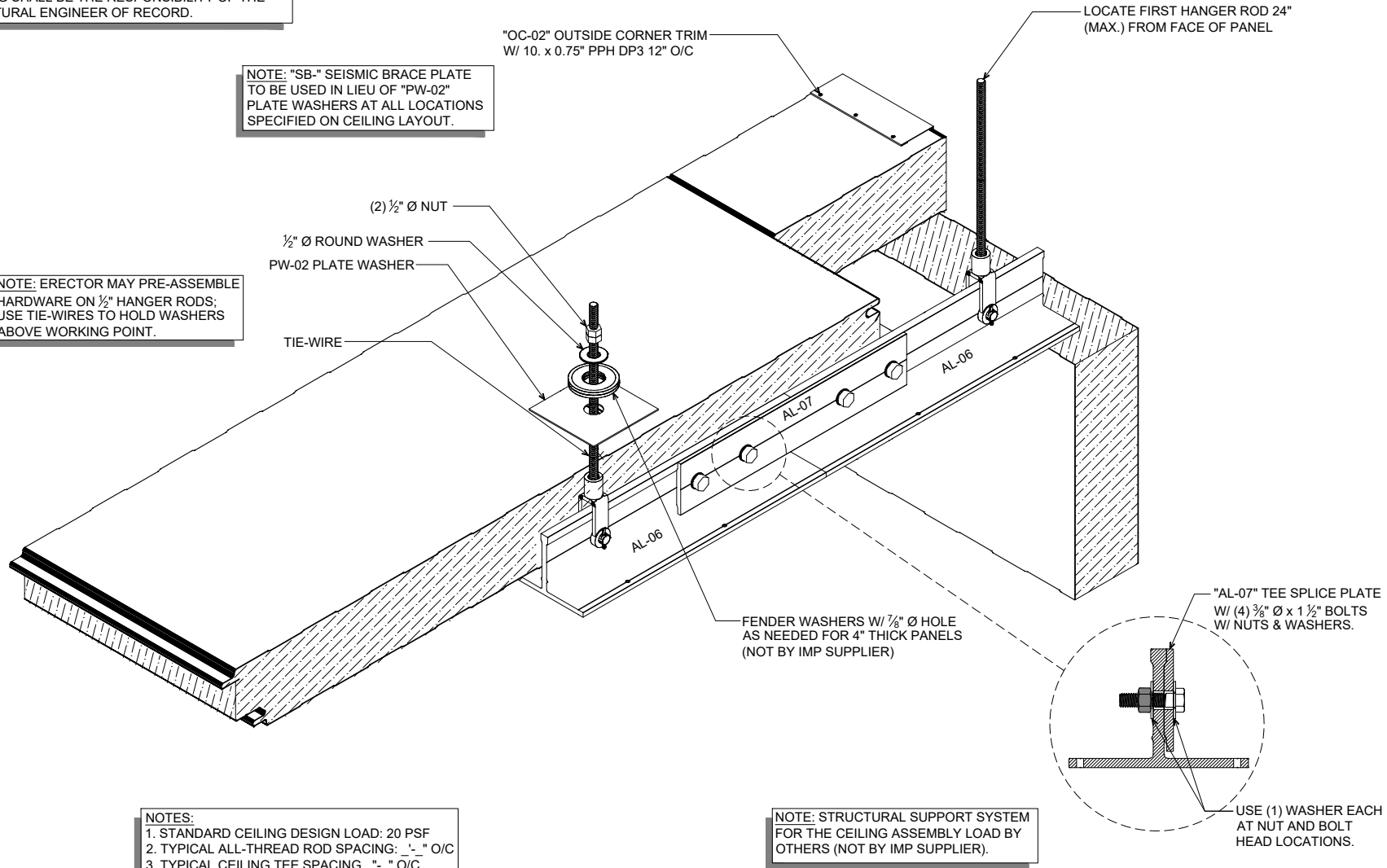


NOTE: AWIP WILL PROVIDE PW- AND SB- PLATES AS SHOWN IN THE DRAWINGS. THE PW- AND SB- LAYOUT IS A GRAPHICAL REPRESENTATION ONLY. FINAL LAYOUT / DESIGN OF CEILING AND PARTITION BRACING SHALL BE THE RESPONSIBILITY OF THE STRUCTURAL ENGINEER OF RECORD.

NOTE: "SB-" SEISMIC BRACE PLATE TO BE USED IN LIEU OF "PW-02" PLATE WASHERS AT ALL LOCATIONS SPECIFIED ON CEILING LAYOUT.

NOTE: ERECTOR MAY PRE-ASSEMBLE HARDWARE ON 1/2" HANGER RODS; USE TIE-WIRES TO HOLD WASHERS ABOVE WORKING POINT.

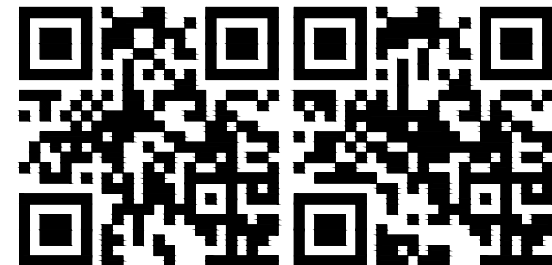


NOTES:  
 1. STANDARD CEILING DESIGN LOAD: 20 PSF  
 2. TYPICAL ALL-THREAD ROD SPACING: " \_ " O/C  
 3. TYPICAL CEILING TEE SPACING " \_ " O/C

NOTE: STRUCTURAL SUPPORT SYSTEM FOR THE CEILING ASSEMBLY LOAD BY OTHERS (NOT BY IMP SUPPLIER).

## AL-06 ALUMINUM CEILING TEE SYSTEM

(ISOMETRIC VIEW)



### DETAIL: ISOMETRIC - AL-06 TEE W/ CLEVIS

APPLICATION:  
 CEILING, AMBIENT, COOLER  
 AWIP DETAIL NUMBER:  
 APC-AIIC-ISO-005

929 ALDRIDGE ROAD  
 VACAVILLE, CA 95688  
 TEL: (707) 359-2280  
 FAX: (707) 359-2286  
 WWW.AWIPANELS.COM

**All Weather**  
 Insulated Panels



DATE:  
 06/12/24  
 DRAWN BY:  
 MMF/DJM

SHEET:  
 1 OF 1